

CONNECTTM
WORK TOOLS



**ATTACHMENTS YOU CAN DEPEND ON
FROM PEOPLE YOU TRUST**

Connect Work Tools is part of Exodus Global, a family-owned company based in Superior, Wisconsin

CHG SERIES BREAKERS

Gas-Fired breakers for small to medium sized carriers



As a manufacturing partner with OilQuick Americas®, all Connect attachments can be fitted with an automatic quick coupler

CHG Series Gas-Fired Breaker Specs

Model	Ft. Lb. Class	Working Weight Lbs.	Carrier Weight Lbs.	Tool Diameter In.	Impact Rate BPM	Flow Range GPM
CHG2	250	326	2,200 - 6,600	1.56	700 - 1,500	4 - 9
CHG3	400	414	4,400 - 9,900	2.15	450 - 1,150	6.6 - 11.9
CHG6	500	656	5,000 - 13,000	2.63	632 - 1,500	10 - 22
CHG7	750	746	8,500 - 13,000	2.65	600 - 1,100	10 - 22
CHG9	1,000	960	10,000 - 20,000	2.93	450 - 750	10.6 - 21.1
CHG10	1,500	1,245	15,000 - 27,000	3.32	400 - 750	11.9 - 22.5
CHG15	2,500	2,156	24,000 - 35,000	3.90	400 - 750	21.1 - 29

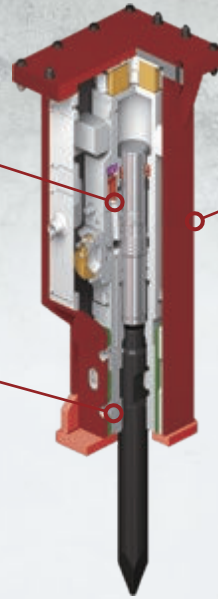
CHG Series Highlights

1 Auto Shut Off (ASO)

Protects hammer from blank firing. Instantly stops the hammer operation when breaking through material. Activation of ASO can be easily adjusted to the working environment.

2 Rotatable / Slip-fit Tool Bushing

Field replaceable tool bushing provides multiple wear surfaces reducing replacement costs.



3 Boxed Housing Design

CHG series breakers can come as a boxed style which protects the powercell by fully enclosing the breaker. It also helps reduce operational noise.

MODERNIZE YOUR FLEET

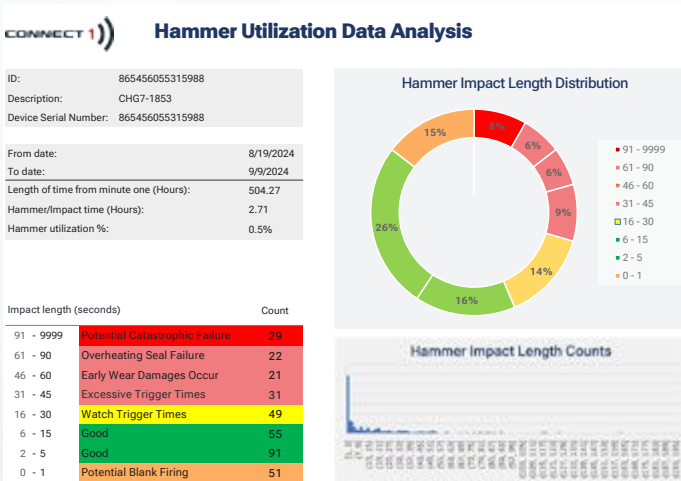


A revolutionary new wireless telematics device that delivers detailed diagnostic data on the attachment it's connected to.

CONNECT 1 Features:

- GPS Location, with bread crumb history
- Temperature detection
- Burst data (trigger time)
- Utilization (daily, weekly, monthly)
- Device health alerts (low battery, signal strength, etc)
- Alarm detection (shock, motion, G force, etc)
- Daylight/Dark detection
- Event history
- Geo-fencing

Track location, working time, and monitor the health status of your attachments!



CH SERIES BREAKERS

Oil-Fired breakers for medium to large sized carriers

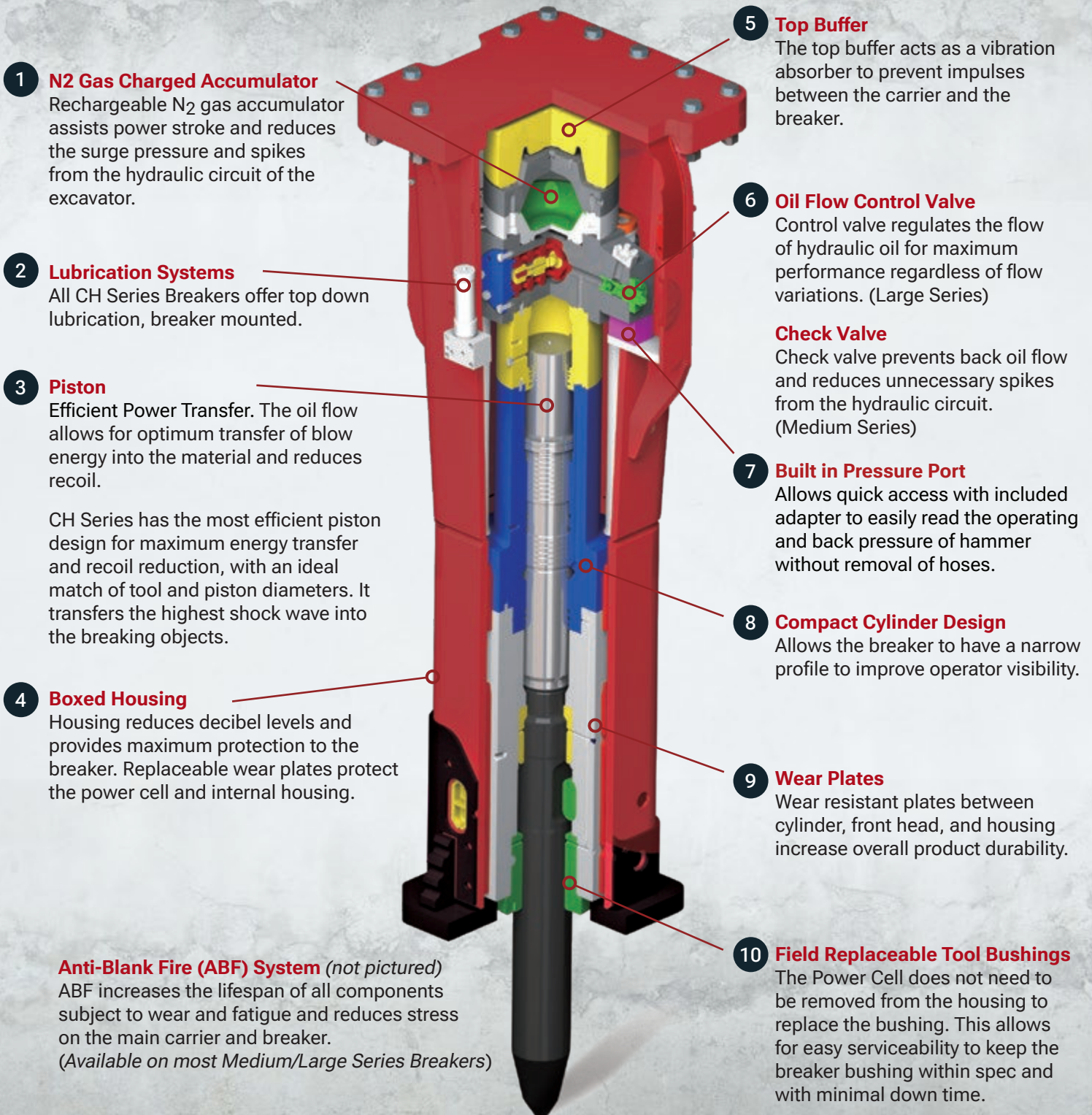


As a manufacturing partner with **OilQuick Americas®**, all Connect attachments can be fitted with an automatic quick coupler

CH Series Oil-Fired Breaker Specs

Model	Ft. Lb. Class	Working Weight Lbs.	Carrier Weight Lbs.	Tool Diameter In.	Impact Rate BPM	Flow Range GPM
CH120	3,000	3,300	40,000 - 55,000	4.72	400 - 500	26 - 39
CH130	4,000	3,825	48,000 - 62,000	5.11		34 - 39
CH140	5,500	4,960	55,000 - 68,000	5.51		45 - 53
CH150	7,500	5,380	61,000 - 73,000	5.91	350 - 450	45 - 53
CH165	10,000	6,504	73,000 - 90,000	6.5		50 - 58
CH175	12,000	8,270	88,000 - 154,000	6.89	300 - 400	55 - 63
CH180	14,000	12,130	110,000 - 190,000	7.09		66 - 81
CH205	16,000	16,530	154,000 - 240,000	8.07		79 - 106

CH Series Highlights



1 N2 Gas Charged Accumulator
Rechargeable N₂ gas accumulator assists power stroke and reduces the surge pressure and spikes from the hydraulic circuit of the excavator.

2 Lubrication Systems
All CH Series Breakers offer top down lubrication, breaker mounted.

3 Piston
Efficient Power Transfer. The oil flow allows for optimum transfer of blow energy into the material and reduces recoil.

CH Series has the most efficient piston design for maximum energy transfer and recoil reduction, with an ideal match of tool and piston diameters. It transfers the highest shock wave into the breaking objects.

4 Boxed Housing
Housing reduces decibel levels and provides maximum protection to the breaker. Replaceable wear plates protect the power cell and internal housing.

Anti-Blank Fire (ABF) System (not pictured)
ABF increases the lifespan of all components subject to wear and fatigue and reduces stress on the main carrier and breaker.
(Available on most Medium/Large Series Breakers)

5 Top Buffer
The top buffer acts as a vibration absorber to prevent impulses between the carrier and the breaker.

6 Oil Flow Control Valve
Control valve regulates the flow of hydraulic oil for maximum performance regardless of flow variations. (Large Series)

Check Valve
Check valve prevents back oil flow and reduces unnecessary spikes from the hydraulic circuit. (Medium Series)

7 Built in Pressure Port
Allows quick access with included adapter to easily read the operating and back pressure of hammer without removal of hoses.

8 Compact Cylinder Design
Allows the breaker to have a narrow profile to improve operator visibility.

9 Wear Plates
Wear resistant plates between cylinder, front head, and housing increase overall product durability.

10 Field Replaceable Tool Bushings
The Power Cell does not need to be removed from the housing to replace the bushing. This allows for easy serviceability to keep the breaker bushing within spec and with minimal down time.

CWP SERIES PULVERIZERS

- Cutter has 4 edges - rotate cutting edges for longer usage
- One-piece replaceable tooth plates made with hardened steel
- Internal speed valve allows for faster cycle times



CWP Series Hydraulic Pulverizer Specs

Model	Working Weight* lbs.	Carrier Weight lbs.	Crushing Force lbs.	Jaw Width In.	Max Jaw Opening In.	Flow Rate GPM	Max Pressure PSI
CWP2000	4,350	39,000 - 60,000	286,600	24	38	66	4,600
CWP2000R	4,925	39,000 - 60,000					
CWP3000	6,576	60,000 - 85,000	440,900	27	44	79	
CWP3000R	7,253	60,000 - 85,000					

*Note: weight shown is without bracket

CMG SERIES SELF-CONTAINED HYDRAULIC MAGNETS

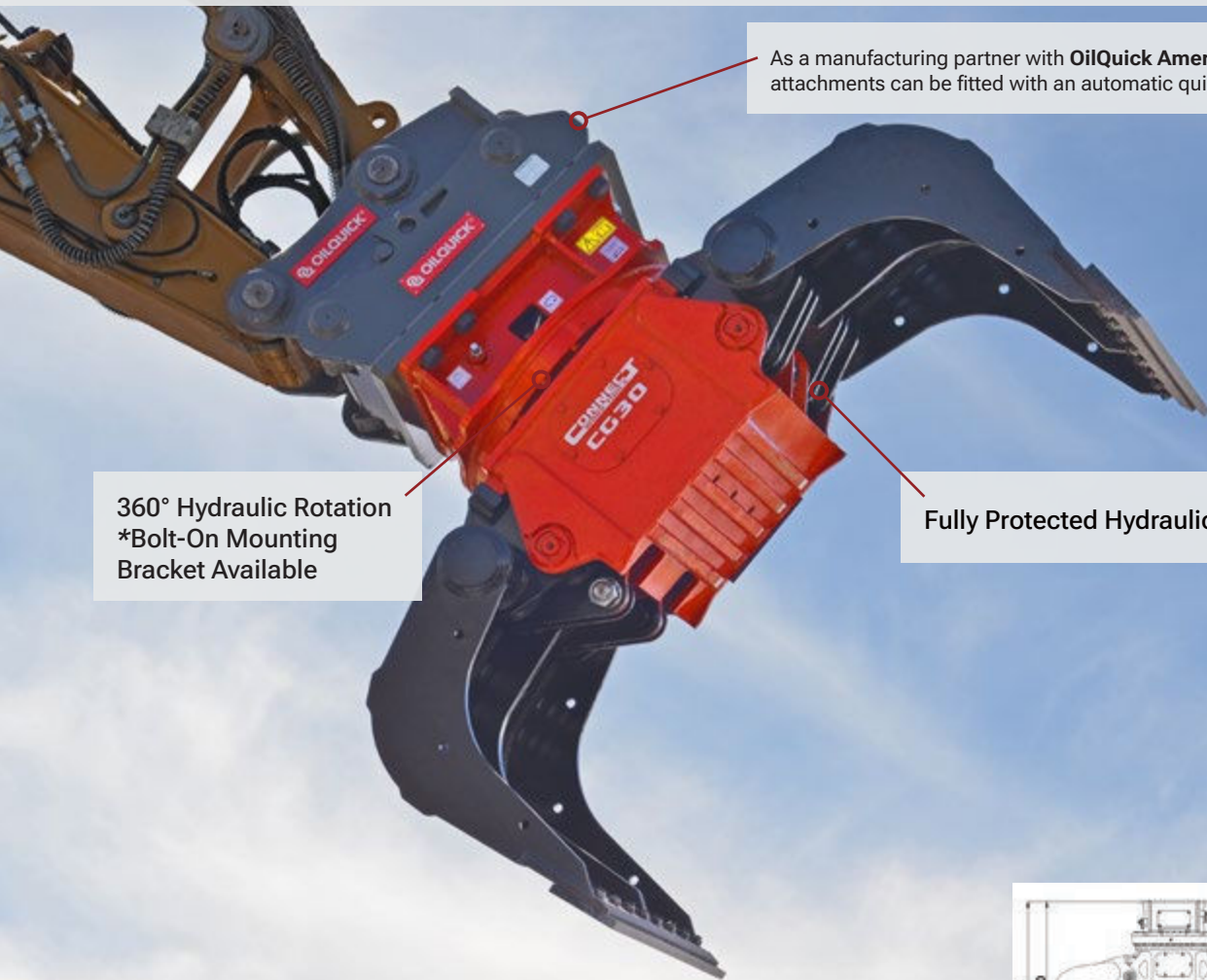
Engineered for Versatile Jobsite Performance

CMG Series Magnets are available in configurations with heavy-duty teeth for raking and recovery in demolition applications, or with chains for efficient material handling.

CMGID Series with Teeth / CMGIC with Chain

Model	Carrier weight Lbs.	Flow Rate GPM	Diameter In.	Power kW	Weight Lbs.	Voltage V	10 min Duty Cycle %
CMG38ID	28,000 - 34,000	10 - 40	38	4.5	2,646	220	50
CMG42ID	38,000 - 46,000	10.5 - 40	42	5.5	3,086	220	50
CMG42IC	38,000 - 46,000	10.5 - 40	42	5.5	2,315	220	50
CMG50ID	52,000 - 64,000	12 - 40	50	7.0	4,189	220	50
CMG50IC	52,000 - 64,000	12 - 40	50	7.0	3,461	220	50

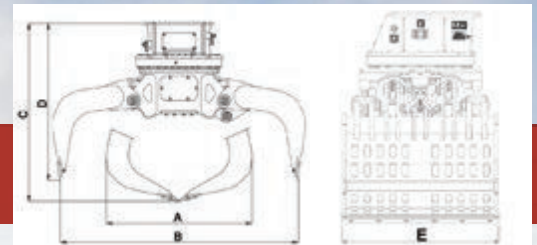
CG SERIES ROTATING GRAPPLES



As a manufacturing partner with OilQuick Americas®, all Connect attachments can be fitted with an automatic quick coupler

360° Hydraulic Rotation
*Bolt-On Mounting
Bracket Available

Fully Protected Hydraulic Cylinders



CG Series Rotating Grapple Specs

Model	Working Weight* Lbs.	Carrier Weight Lbs.	Capacity Ft ³	Oil Flow GPM	Jaw Width Closed (A) In.	Max Jaw Opening (B) In.	Height Closed (C) In.	Height Opened (D) In.	Grapple Width (E) In.
CG10	870	17,000 - 27,000	7.1	16	38	63	40	35	19
CG15	2,447	26,000 - 38,000	14.2	21	42	67	50	44	34
CG22	3,306	38,000 - 60,000	24.7	26	48	78	55	49	41
CG30	4,508	60,000 - 85,000	35.3	47	58	85	58	65	44
CG40	5,180	80,000 - 100,000	40.1	47	62	94	66	58	52

*Note: weight shown is without bracket

CS SERIES SHEAR



Connect Work Tools' CS Series Shears are ideal for scrap processing, demolition work, road and bridge reconstruction, and jobs where torching is not practical or cost-effective.

The CS Difference

- Unique tip design covers the entire tip, reducing maintenance downtime
- Massive pivot group eliminates the need for an auto-guide system
- 360° continuous rotation on a turntable bearing
- Maximized power to weight ratio
- Made with high-strength, abrasion-resistant steel for durability
- Taller blades resulting in a stronger jaw structure
- Increased operator visibility with an integrated end cap and nut
- Compact and solid main shaft design

CS Series Shear Specs

Model	Min Excavator Stick Mount Lbs.	Min Skid Steer Loader Lbs.	Weight Lbs.	Jaw Opening In.	Jaw Depth In.
CS7 with SSL Bracket	15,432	6,614	1,704	11.6	12.6
CS7 Flat Top	15,432	6,614	1,448	11.6	12.6
CS15 with Bracket	26,455	-	3,860	16.1	16.1
CS15 Flat Top	26,455	-	3,279	16.1	16.1

CC SERIES COMPACTORS



The CC Compactor Series has **integrated flow control valves**, and **self aligning bearings** with a **maintenance-free oil lubrication system**.

- Specially designed rubber isolators
- High performance hydraulic motor capable of operating at 2,000 RPM
- Heavy duty frame and base plate
- Compatible mounting brackets with the CH Breaker and CG Grapple Series

CC Series Compactor Specs

Model	Working Weight Lbs.	Carrier Weight Lbs.	Oil Flow GPM	Compaction Plate Size In.	Impact Force Lbs.	Impact Frequency CPM
CC4K	550	3,000 - 8,000	11 - 22	16 x 28	3,500	2,100
CC8K	850	5,000 - 16,500	21 - 33	24 x 34	7,400	2,100
CC14K	1,675	13,000 - 28,000	26 - 61	29 x 38	13,900	2,100
CC20K	2,135	19,000 - 28,000	31 - 65	32 x 41	15,500	2,100
CC22K	2,930	22,000 - 50,000	39 - 73	34 x 50	22,000	2,100

REBUILD SERVICE

Our Texas Breaker Service Center provides expert rebuilds for CWT breakers and most major brands.

We document every repair with detailed diagnostics and photos, giving you full transparency from start to finish. Each breaker is rigorously tested before return and backed by a 90-day warranty.

Our support doesn't stop in the shop: our field service team delivers on-site installation, training, and ongoing support for dealers and end users.



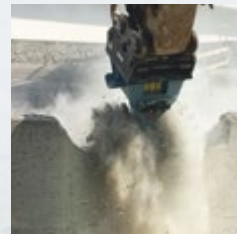
Rock & concrete excavation, crushing, and screening attachments that compliment Connect Work Tools

ROCKWHEEL

Rock & Concrete grinder attachments that offer precision cutting and grinding for many applications



DEMOLITION



TRENCHING



ROCKCRUSHER

On-Site & Mobile Crushing Attachment

With the Rockcrusher, material can be crushed directly on site. Disposal and transportation costs to stationary crushing plants are avoided. Operation cost is **less than \$1 per ton** of processed material (including fuel and maintenance costs).

+1 814-466-7134

info@RockzoneAmericas.com

RockzoneAmericas.com



CONNECT[™] WORK TOOLS

ConnectWorkTools.com

+1 920.238.6657

Info@ConnectWorkTools.com

115 Commerce Blvd.

Cleburne, TX 76033 USA

FIND YOUR REP



EXODUS GLOBAL

Connect Work Tools is part of Exodus Global, a family-owned company based in Superior, Wisconsin

BLADECORE **CONNECT** **OILQUICK** **ROCKZONE** **SHEARCORE**
WORK TOOLS AMERICAS