

# CONNECT<sup>TM</sup>

## WORK TOOLS



**ATTACHMENTS YOU CAN DEPEND ON  
FROM PEOPLE YOU TRUST**

Connect Work Tools is part of Exodus Global, a family-owned company based in Superior, Wisconsin



## CHG SERIES BREAKERS

Gas-Fired breakers for small to medium sized carriers



### CHG Series Gas-Fired Breaker Specs

Model	Ft. Lb. Class	Working Weight Lbs.	Carrier Weight Lbs.	Tool Diameter In.	Impact Rate BPM	Flow Range GPM
CHG2	250	326	2,200 - 6,600	1.56	700 - 1,500	4 - 9
CHG3	400	414	4,400 - 9,900	2.15	450 - 1,150	6.6 - 11.9
CHG6	500	656	6,000 - 10,000	2.63	632 - 1,500	10 - 22
CHG7	750	746	8,500 - 12,000	2.65	600 - 1,100	10 - 22
CHG9	1,000	960	10,000 - 18,000	2.93	450 - 750	10.6 - 21.1
CHG10	1,500	1,245	12,000 - 24,000	3.32	400 - 750	11.9 - 22.5
CHG15	2,500	2,156	30,000 - 40,000	3.90	400 - 750	21.1 - 29

# GET CONNECTED. STAY CONNECTED.

## CHG Series Highlights

### 1 Auto Shut Off (ASO)

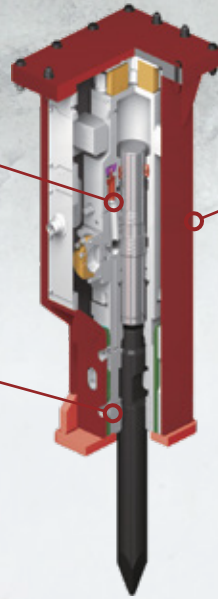
Protects hammer from blank firing. Instantly stops the hammer operation when breaking through material. Activation of ASO can be easily adjusted to the working environment.

### 2 Rotatable / Slip-fit Tool Bushing

Field replaceable tool bushing provides multiple wear surfaces reducing replacement costs.

### 3 Boxed Housing Design

CHG series breakers can come as a boxed style which protects the powercell by fully enclosing the breaker. It also helps reduce operational noise.



## MODERNIZE YOUR FLEET

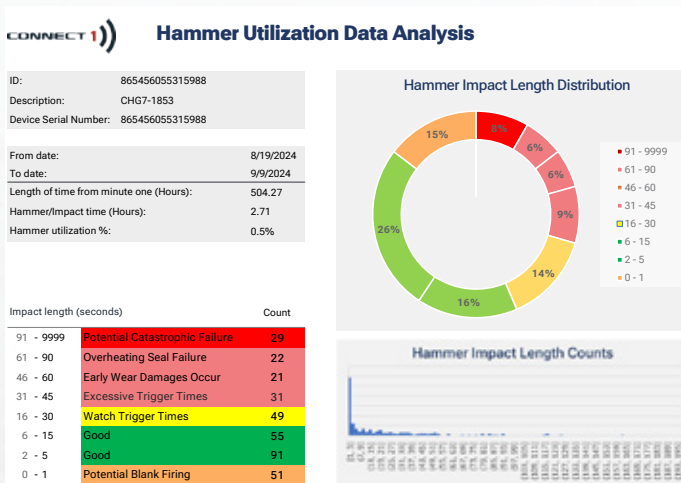


A revolutionary new wireless telematics device that delivers detailed diagnostic data on the attachment it's connected to.

### CONNECT 1 Features:

- GPS Location, with bread crumb history
- Temperature detection
- Burst data (trigger time)
- Utilization (daily, weekly, monthly)
- Device health alerts (low battery, signal strength, etc)
- Alarm detection (shock, motion, G force, etc)
- Daylight/Dark detection
- Event history
- Geo-fencing

Track location, working time, and monitor the health status of your attachments!





## CH SERIES BREAKERS

Oil-Fired breakers for medium to large sized carriers



### CH Series Oil-Fired Breaker Specs

Model	Ft. Lb. Class	Working Weight Lbs.	Carrier Weight Lbs.	Tool Diameter In.	Impact Rate BPM	Flow Range GPM
CH120	3,000	3,200	38,000 - 48,000	4.72	400 - 500	26 - 39
CH130	4,000	3,725	48,000 - 55,000	5.11		34 - 39
CH140	5,500	4,620	52,000 - 60,000	5.51		45 - 53
CH150	7,500	5,380	52,000 - 75,000	5.91	350 - 450	45 - 53
CH165	10,000	6,504	60,000 - 80,000	6.5		50 - 58
CH175	12,000	8,270	80,000 - 120,000	6.89	300 - 400	55 - 63
CH180	14,000	12,130	100,000 - 140,000	7.09		66 - 81
CH205	16,000	16,530	120,000 +	8.07		79 - 106



# ATTACHMENTS YOU CAN DEPEND ON FROM PEOPLE YOU TRUST

## CH Series Highlights

### 1 **N2 Gas Charged Accumulator**

Rechargeable N<sub>2</sub> gas accumulator assists power stroke and reduces the surge pressure and spikes from the hydraulic circuit of the excavator.

### 2 **Lubrication Systems**

All CH Series Breakers offer top down lubrication, breaker mounted.

### 3 **Piston**

Efficient Power Transfer. The oil flow allows for optimum transfer of blow energy into the material and reduces recoil.

CH Series has the most efficient piston design for maximum energy transfer and recoil reduction, with an ideal match of tool and piston diameters. It transfers the highest shock wave into the breaking objects.

### 4 **Boxed Housing**

Housing reduces decibel levels and provides maximum protection to the breaker. Replaceable wear plates protect the power cell and internal housing.

### **Anti-Blank Fire (ABF) System** (not pictured)

ABF increases the lifespan of all components subject to wear and fatigue and reduces stress on the main carrier and breaker.

(Available on most Medium/Large Series Breakers)

### 5 **Top Buffer**

The top buffer acts as a vibration absorber to prevent impulses between the carrier and the breaker.

### 6 **Oil Flow Control Valve**

Control valve regulates the flow of hydraulic oil for maximum performance regardless of flow variations. (Large Series)

### **Check Valve**

Check valve prevents back oil flow and reduces unnecessary spikes from the hydraulic circuit. (Medium Series)

### 7 **Built in Pressure Port**

Allows quick access with included adapter to easily read the operating and back pressure of hammer without removal of hoses.

### 8 **Compact Cylinder Design**

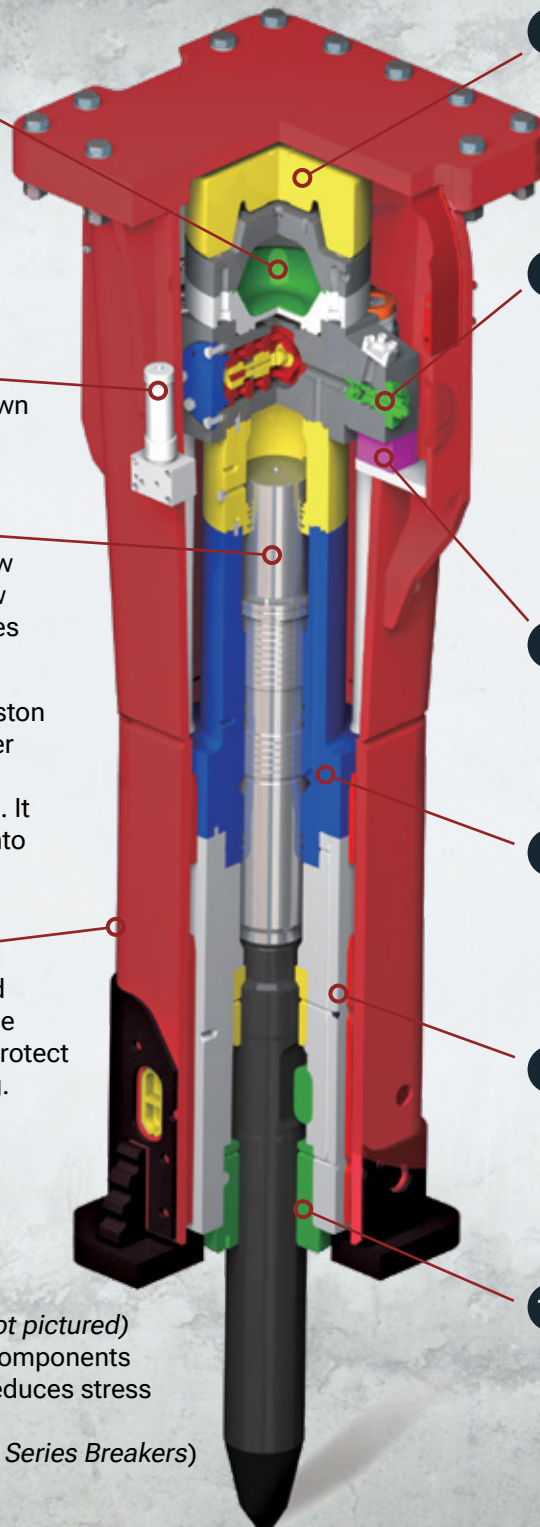
Allows the breaker to have a narrow profile to improve operator visibility.

### 9 **Wear Plates**

Wear resistant plates between cylinder, front head, and housing increase overall product durability.

### 10 **Field Replaceable Tool Bushings**

The Power Cell does not need to be removed from the housing to replace the bushing. This allows for easy serviceability to keep the breaker bushing within spec and with minimal down time.





## CWP SERIES PULVERIZERS



As a manufacturing partner with **OilQuick Americas®**, all Connect attachments can be fitted with an automatic quick coupler

360° hydraulic rotation kit available.  
Allows for changing from non-rotating to rotating

Internal speed valve allows for faster cycle times (not shown)

Cutter has 4 edges - rotate cutting edges for longer use

One-piece replaceable tooth plates  
Teeth are made of Hardox Steel

### CWP Series Hydraulic Pulverizer Specs

Model	Working Weight lbs.	Carrier Weight lbs.	Crushing Force lbs.	Jaw Width in.	Max Jaw Opening in.	Flow Rate GPM	Max Pressure PSI
CWP2000	4,200	50,000 - 70,000	242,500	24	37	66	4,600
CWP2000R	5,300	55,000 - 70,000					
CWP3000	6,150	60,000 - 90,000	352,700	27	41	79	
CWP3000R	7,000	65,000 - 90,000					



# IT'S CRUNCH TIME

## PULVERIZER APPLICATIONS

- Clean sorting of concrete from rebar for recycling purposes
- Downsizing material for efficient haul off





## CMG SERIES SELF CONTAINED HYDRAULIC MAGNETS



### ***CMGID Series with Teeth***

Models	Carrier weight lbs.	Flow Rate GPM	Diameter in	Power kW	Weight lbs.	Voltage V
CMG38ID	28,000 - 34,000	10 - 40	38	4.5	2,646	220
CMG42ID	38,000 - 46,000	10.5 - 40	42	5.5	3,046	220
CMG50ID	52,000 - 64,000	12 - 40	50	7.0	4,189	220



# ATTACHMENTS YOU CAN DEPEND ON FROM PEOPLE YOU TRUST

## CMG SERIES MAGNETS

- Used in demolition, scrap, waste, C & D, and railroad applications
- CMG Electromagnets models are equipped with a plate for quick hitch and can be attached without manual intervention
- The teeth on the CMGID are designed to rake debris, making it easier to extract ferrous materials.
- Teeth on the CMGID are equipped with a quick fitting device and are easy to replace

Model: CMG42ID with teeth

## CMGIC Series with Chains

Models	Carrier weight lbs.	Flow Rate GPM	H base in	Power kW	Weight lbs.	Voltage V
CMG42IC	38,000 - 46,000	10.5 - 40	42	5.5	2,315	220

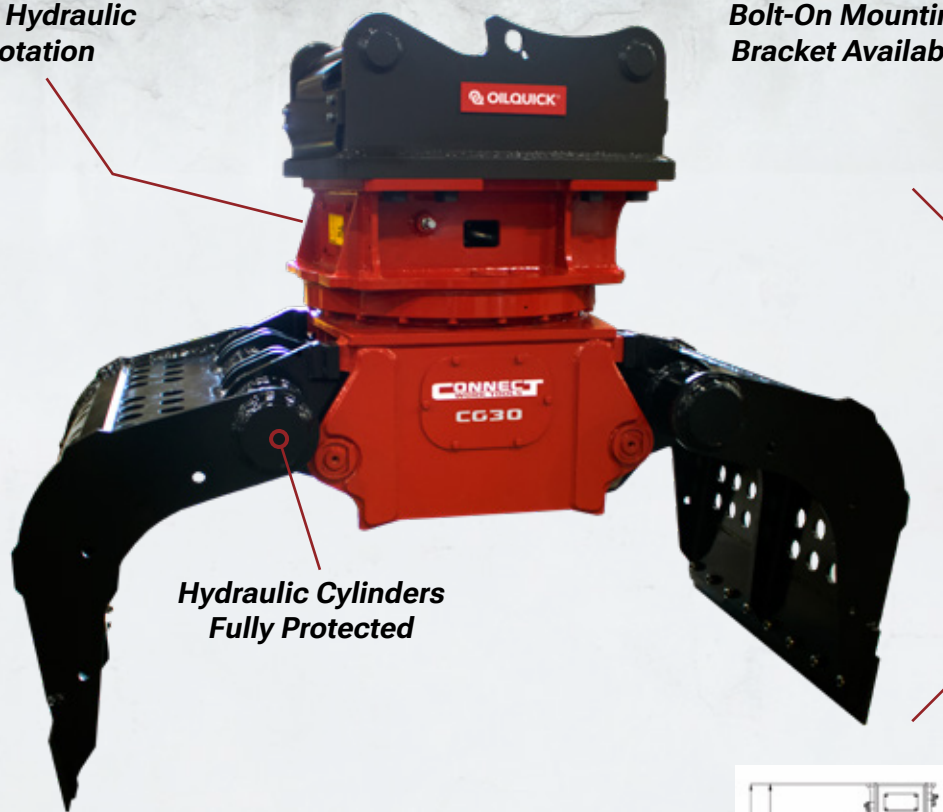


## CG SERIES ROTATING GRAPPLES

As a manufacturing partner with **OilQuick Americas®**, all Connect attachments can be fitted with an automatic quick coupler

**360° Hydraulic  
Rotation**

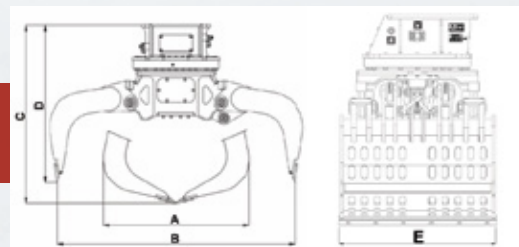
**Bolt-On Mounting  
Bracket Available**



**Hydraulic Cylinders  
Fully Protected**

**Heavy Duty  
Construction**

### CG Series Rotating Grapple Specs



Model	Working Weight Lbs.	Carrier Weight Lbs.	Capacity Ft <sup>3</sup>	Oil Flow GPM	Jaw Width Closed (A) In.	Max Jaw Opening (B) In.	Height Closed (C) In.	Height Opened (D) In.	Grapple Width (E) In.
<b>CG10</b>	1,080	10,000 - 18,000	7.1	16	38	63	40	35	18.8
<b>CG15</b>	2,340	18,000 - 38,000	14.2	21	42	65	50	44	33.5
<b>CG22</b>	3,420	38,000 - 60,000	24.7	26	48	78	55	49	41.3
<b>CG30</b>	4,800	60,000 - 85,000	35.3	40	58	80	58	65	43.9
<b>CG40</b>	5,200	85,000 - 100,000	40.1	55	62	84	66	58	52.1



**GET CONNECTED.  
STAY CONNECTED.**

### **GRAPPLE APPLICATIONS**

- Sorting C & D Debris
- Waste/Recycling
- Storm Clean up
- Select Demolition
- High Reach Demolition
- Landscaping
- Transfer Stations
- Road Maintenance
- Truck/Railroad Cranes





## CS SERIES SHEARS

Connect Work Tools' CS Series Shears that are ideal for scrap processing, demolition work, road and bridge reconstruction, and jobs where torching is not practical or cost-effective.



### The CS Difference

- Unique tip design covers the entire tip, reducing maintenance downtime
- Massive pivot group eliminates the need for an auto-guide system
- 360° continuous rotation on a turntable bearing
- Maximized power to weight ratio
- Made with high-strength, abrasion-resistant steel for durability
- Taller blades resulting in a stronger jaw structure
- Increased operator visibility with an integrated end cap and nut
- Compact main solid main shaft design

### CS Series Shear Specs

Model	Min Excavator Stick Mount Lbs.	Min Skid Steer Loader Lbs.	Weight Lbs.	Jaw Opening In.	Jaw Depth In.
<b>CS7 with SSL Bracket</b>	15,432	6,614	1,704	11.6	12.6
<b>CS7 Flat Top</b>	15,432	6,614	1,448	11.6	12.6
<b>CS15 with Bracket</b>	26,455	-	3,860	16.1	16.1
<b>CS15 Flat Top</b>	26,455	-	3,279	16.1	16.1



# ANY PROJECT BIG or SMALL

## CC SERIES COMPACTORS

CWT's CC Compactor Series has integrated flow control valves, and self aligning bearings with a maintenance-free oil lubrication system.

The CC series has compatible mounting brackets for the CH Breaker and CG Grapple Series.



## CC Series Compactor Specs

Model	Approx. Attachment Weight lbs.	Jaw Opening in.	Jaw Depth in.	Reach	Minimum Excavator 2nd Member Mount lbs.	Minimum Excavator 3rd Member Mount lbs.
FC25	6,100	32	30	7' 4"	30,000	45,000
FC35	8,700	42	38	9' 4"	40,000	66,000
FC45	10,200	53	44	10' 4"	60,000	90,000
FC95	21,000	65	64	13' 7"	105,000	185,000





## ROCKWHEEL

Rock & Concrete grinder attachments that offer precision cutting and grinding for many applications

### DEMOLITION



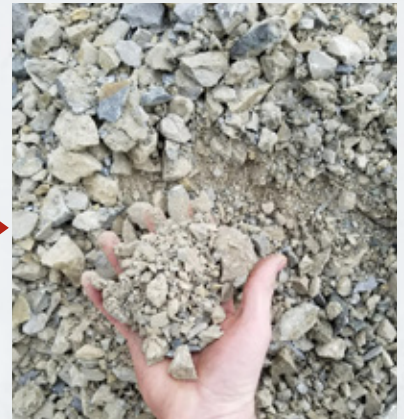
### TRENCHING



## ROCKCRUSHER

### On-Site & Mobile Crushing Attachment

With the Rockcrusher, material can be crushed directly on site. Disposal and transportation costs to stationary crushing plants are avoided. Operation cost is **less than \$1 per ton** of processed material (including fuel and maintenance costs).



+1 814-466-7134  
info@RockzoneAmericas.com  
**RockzoneAmericas.com**





## REBUILD SERVICE

**Our breaker Service Center in Texas offers rebuild service on CWT breakers and most other top-tier equipment brands**

Our commitment to transparent and open communication is at the core of our rebuilding service. We utilize a comprehensive diagnostic form and capture images of any damaged components, ensuring a highly visible, well-documented record stored in our customer database.

Before returning any repaired breakers to you, we subject them to rigorous testing and keep detailed records of their performance. Additionally, all our rebuild services come with a 90-day warranty for your peace of mind.

Complementing our rebuild facility is our investment in top-tier field service personnel. From on-site installation support to tailored training programs for dealers and end users, we provide a comprehensive suite of services that sets us apart.

## PARTS

**We understand the need to keep your investment up and running.**

Our Texas facility is fully stocked with replacement parts for Connect Work Tools and RockZone attachments.

We offer same day shipping on most parts.

In addition to standard parts, we offer customization kits for special applications:

- Combo brackets
- Solida® tool bits for most major brands
- Specialty tools
- Plating kits
- Rebuild kits







**ConnectWorkTools.com**

**+1 920.238.6657**

**Info@ConnectWorkTools.com**

**115 Commerce Blvd.**

**Cleburne, TX 76033 USA**

**FIND YOUR REP**



**EXODUS**  
GLOBAL

**Connect Work Tools is part of Exodus Global, a family-owned  
company based in Superior, Wisconsin**

**BLADECORE™**

**CONNECT™**  
WORK TOOLS

**OILQUICK®**

**ROCKZONE**  
AMERICAS

**SHEARCORE™**