

**CONNECT**<sup>TM</sup>  
**WORK TOOLS**



**ATTACHMENTS YOU CAN DEPEND ON  
FROM PEOPLE YOU TRUST**

Connect Work Tools is part of Exodus Global, a family-owned company based in Superior, Wisconsin



## CHG SERIES BREAKERS

Gas-Fired breakers for small to medium sized carriers



### CHG Series Gas-Fired Breaker Specs

Model	Ft. Lb. Class	Working Weight lbs.	Carrier Weight lbs.	Tool Diameter in.	Impact Rate bpm	Oil Flow Range l/min
CHG2	250	326	2,200 - 6,600	1.56	700 - 1,500	15 - 35
CHG3	400	414	4,400 - 9,900	2.15	450 - 1,150	25 - 45
CHG6	500	656	6,000 - 10,000	2.63	632 - 1,500	38 - 83
CHG7	750	746	8,500 - 12,000	2.65	600 - 1,100	38 - 83
CHG9	1,000	960	10,000 - 12,000	2.93	450 - 750	40 - 80
CHG10	1,500	1,245	12,000 - 24,000	3.32	400 - 750	45 - 85
CHG15	2,500	2,156	30,000 - 40,000	3.90	400 - 750	80 - 100

# GET CONNECTED. STAY CONNECTED.

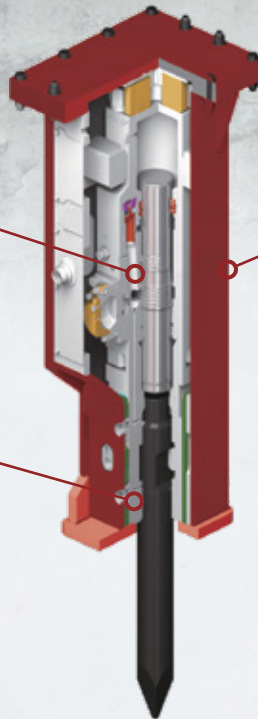
## CHG Series Highlights

### 1 Auto Shut Off (ASO)

Protects hammer from blank firing. Instantly stops the hammer operation when breaking through material. Activation of ASO can be easily adjusted to the working environment.

### 2 Rotatable / Slip-fit Tool Bushing

Field replaceable tool bushing provides multiple wear surfaces reducing replacement costs.



### 3 Boxed Housing Design

CHG series breakers can come as a boxed style which protects the powercell by fully enclosing the breaker. It also helps reduce operational noise.

## MODERNIZE YOUR FLEET



### CONNECT 1 Features:

- GPS Location, with bread crumb history
- Temperature detection
- Burst data (trigger time)
- Utilization (daily, weekly, monthly)
- Device health alerts (low battery, signal strength, etc)
- Alarm detection (shock, motion, G force, etc)
- Daylight/Dark detection
- Event history
- Geo-fencing

**CONNECT 1** is a revolutionary new wireless telematics device that gives you detailed diagnostic data on the attachment it's connected to.

Imagine being able to track location, track working time, and monitor the health status of your attachments!





## CH SERIES BREAKERS

Oil-Fired breakers for medium to large sized carriers



### CH Series Oil-Fired Breaker Specs

Model	Ft. Lb. Class	Working Weight Lbs.	Carrier Weight Lbs.	Tool Diameter In.	Impact Rate BPM	Flow Range GPM
CH110	2,500	2,640	32,000 - 40,000	4.33	400 - 500	21 - 26
CH120	3,000	3,200	38,000 - 48,000	4.72		26 - 39
CH130	4,000	3,725	48,000 - 55,000	5.11		34 - 39
CH140	5,500	4,620	52,000 - 60,000	5.51		45 - 53
CH150	7,500	5,380	52,000 - 75,000	5.91	350 - 450	45 - 53
CH165	10,000	6,504	60,000 - 80,000	6.5		50 - 58
CH175	12,000	8,270	80,000 - 120,000	6.89	300 - 400	55 - 63
CH180	14,000	12,130	100,000 - 140,000	7.09		66 - 81
CH205	16,000	16,530	120,000 +	8.07		79 - 106



# ATTACHMENTS YOU CAN DEPEND ON FROM PEOPLE YOU TRUST

## CH Series Highlights

### 1 N2 Gas Charged Accumulator

Rechargeable N<sub>2</sub> gas accumulator assists power stroke and reduces the surge pressure and spikes from the hydraulic circuit of the excavator.

### 2 Lubrication Systems

All CH Series Breakers offer top down lubrication, breaker mounted.

### 3 Piston

Efficient Power Transfer. The oil flow allows for optimum transfer of blow energy into the material and reduces recoil.

CH Series has the most efficient piston design for maximum energy transfer and recoil reduction, with an ideal match of tool and piston diameters. It transfers the highest shock wave into the breaking objects.

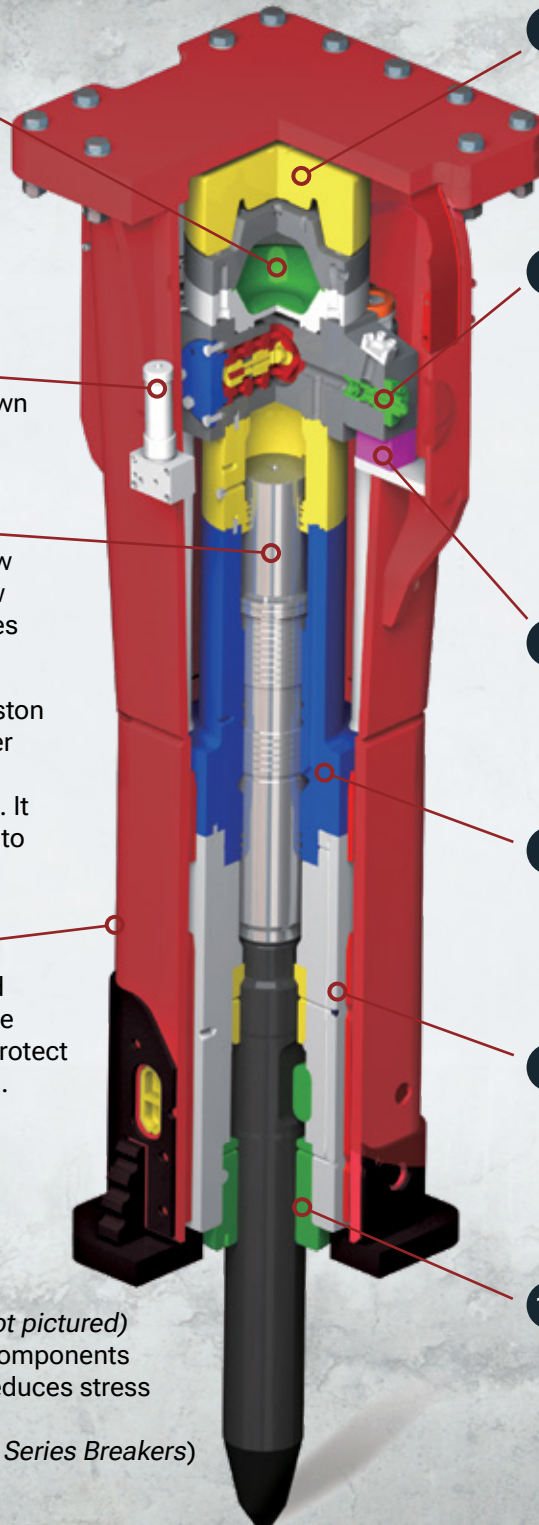
### 4 Boxed Housing

Housing reduces decibel levels and provides maximum protection to the breaker. Replaceable wear plates protect the power cell and internal housing.

### Anti-Blank Fire (ABF) System (not pictured)

ABF increases the lifespan of all components subject to wear and fatigue and reduces stress on the main carrier and breaker.

(Available on most Medium/Large Series Breakers)



### 5 Top Buffer

The top buffer acts as a vibration absorber to prevent impulses between the carrier and the breaker.

### 6 Oil Flow Control Valve

Control valve regulates the flow of hydraulic oil for maximum performance regardless of flow variations. (Large Series)

### Check Valve

Check valve prevents back oil flow and reduces unnecessary spikes from the hydraulic circuit. (Medium Series)

### 7 Built in Pressure Port

Allows quick access with included adapter to easily read the operating and back pressure of hammer without removal of hoses.

### 8 Compact Cylinder Design

Allows the breaker to have a narrow profile to improve operator visibility.

### 9 Wear Plates

Wear resistant plates between cylinder, front head, and housing increase overall product durability.

### 10 Field Replaceable Tool Bushings

The Power Cell does not need to be removed from the housing to replace the bushing. This allows for easy serviceability to keep the breaker bushing within spec and with minimal down time.



## CWP SERIES PULVERIZERS



As a manufacturing partner with **OilQuick Americas<sup>®</sup>**, all Connect attachments can be fitted with an automatic quick coupler

360° hydraulic rotation kit available. Allows for changing from non-rotating to rotating

Internal speed valve allows for faster cycle times (not shown)

Cutter has 4 edges - rotate cutting edges for longer use

One-piece replaceable tooth plates  
Teeth are made of Hardox Steel

### CWP Series Hydraulic Pulverizer Specs

Model	Working Weight Lbs.	Carrier Weight Lbs.	Crushing Force Lbs.	Jaw Width In.	Max Jaw Opening In.	Flow Rate GPM	Max Pressure PSI
<b>CWP2000</b>	4,200	50,000 - 70,000	242,500	24	37	66	4,600
<b>CWP2000R</b>	5,300	55,000 - 70,000					
<b>CWP3000</b>	6,150	60,000 - 90,000	352,700	27	41	79	
<b>CWP3000R</b>	7,000	65,000 - 90,000					



# IT'S CRUNCH TIME

## PULVERIZER APPLICATIONS

- Clean sorting of concrete from rebar for recycling purposes
- Downsizing material for efficient haul off





## CM SERIES SELF CONTAINED HYDRAULIC MAGNETS



**OilQuick®** automatic quick coupler enables attachment swapping in seconds, even with hydraulic hookups

### *CMID Series with Teeth*

Models	Carrier weight Lbs	Flow Rate GPM	Diameter in	Power kW	Weight lbs.	Voltage V
<b>CM38ID</b>	28,000 - 34,000	10 - 40	38	4.5	2,646	220
<b>CM42ID</b>	38,000 - 46,000	10.5 - 40	42	5.5	3,046	220
<b>CM50ID</b>	52,000 - 64,000	12 - 40	50	7.0	4,189	220



# ATTACHMENTS YOU CAN DEPEND ON FROM PEOPLE YOU TRUST

## CM SERIES MAGNETS

- Used in demolition, scrap, waste, C & D, and railroad applications
- CM Electromagnets models are equipped with a plate for quick hitch and can be attached without manual intervention
- The teeth on the CMID are designed to rake debris, making it easier to extract ferrous materials.
- Teeth on the CMID are equipped with a quick fitting device and are easy to replace

Model: CM42ID with teeth

## CMIC Series with Chains

Models	Carrier weight Lbs	Flow Rate GPM	H base in	Power kW	Weight lbs	Voltage V
CM42IC	38,000 - 46,000	10.5 - 40	42	5.5	2,315	220

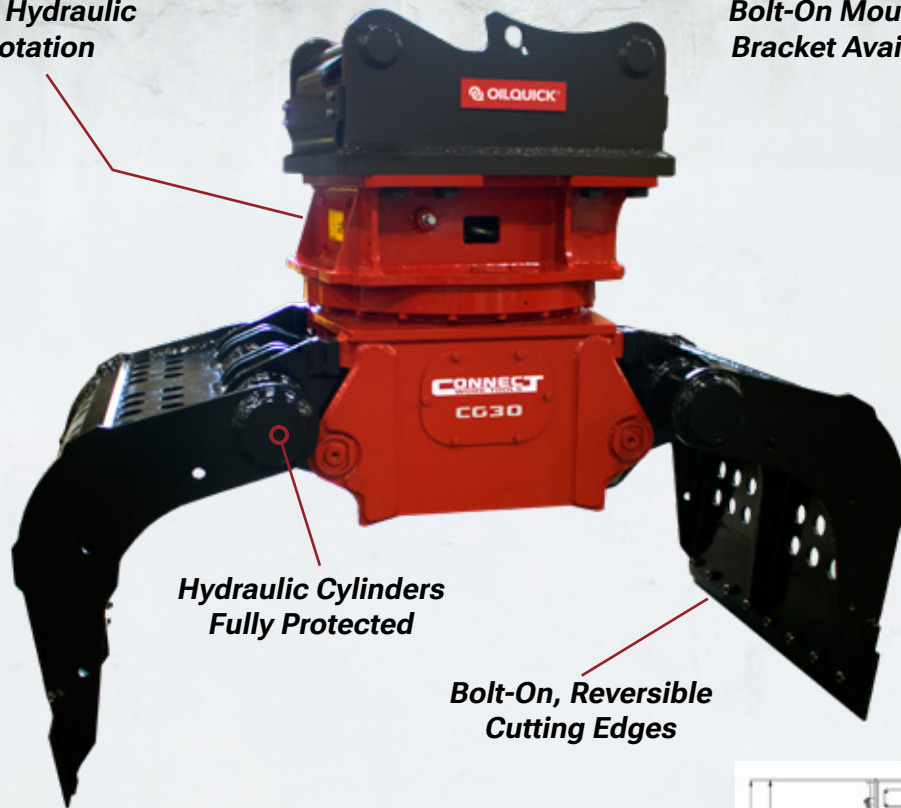


## CG SERIES ROTATING GRAPPLES

As a manufacturing partner with **OilQuick Americas®**, all Connect attachments can be fitted with an automatic quick coupler

**360° Hydraulic Rotation**

**Bolt-On Mounting Bracket Available**

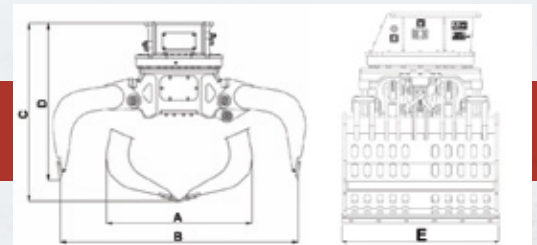


**Hydraulic Cylinders Fully Protected**

**Heavy Duty Construction**

**Bolt-On, Reversible Cutting Edges**

### CG Series Rotating Grapple Specs



Model	Working Weight Lbs.	Carrier Weight Lbs.	Capacity Ft <sup>3</sup>	Oil Flow GPM	Jaw Width Closed (A) In.	Max Jaw Opening (B) In.	Height Closed (C) In.	Height Opened (D) In.	Grapple Width (E) In.
<b>CG10</b>	1,080	10,000 - 18,000	7.1	16	38	63	40	35	18.8
<b>CG15</b>	2,340	18,000 - 38,000	14.2	21	42	65	50	44	33.5
<b>CG22</b>	3,420	38,000 - 60,000	24.7	26	48	78	55	49	41.3
<b>CG30</b>	4,800	60,000 - 85,000	35.3	40	58	80	58	65	43.9
<b>CG40</b>	5,200	85,000 - 100,000	40.1	55	62	84	66	58	52.1



**GET CONNECTED.  
STAY CONNECTED.**

### **GRAPPLE APPLICATIONS**

- Sorting C & D Debris
- Waste/Recycling
- Storm Clean up
- Select Demolition
- High Reach Demolition
- Landscaping
- Transfer Stations
- Road Maintenance
- Truck/Railroad Cranes

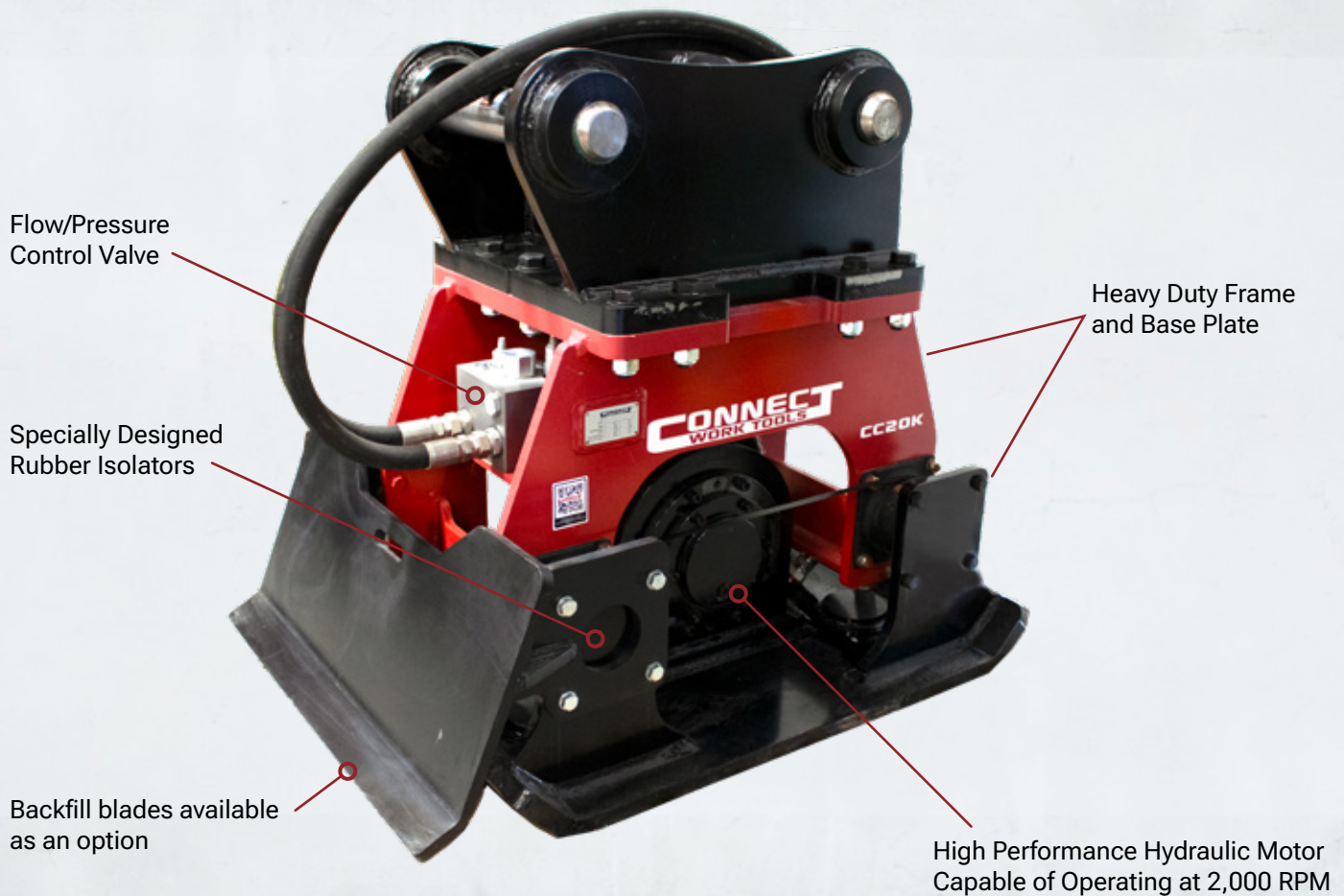




## CC SERIES COMPACTORS

CWT's CC Compactor Series has integrated flow control valves, and self aligning bearings with a maintenance-free oil lubrication system.

The CC series has compatible mounting brackets for the CH Breaker and CG Grapple Series.



**TOUGH WORK  
REQUIRES  
TOUGHER  
ATTACHMENTS**



# ANY PROJECT BIG OR SMALL



## PLATE COMPACTORS APPLICATIONS

- Compacting soil and asphalt
- Backfilling trenches
- Preparing sites for asphalt or concrete
- Post/Pier driving
- Sea wall installations

## CC Series Compactor Specs

Model	Working Weight Lbs.	Carrier Weight Lbs.	Compaction Plate Size In.	Impact Force Lbs.	Impact Frequency CPM	Flow Rate GPM
CC4K	550	6,000 - 12,000	16 x 28	3,500	2,100	11
CC8K	850	10,000 - 20,000	24 x 34	6,500	2,100	21
CC14K	1,675	28,000 - 50,000	28 x 38	11,000	2,100	26
CC20K	2,135	40,000 - 65,000	32 x 46	15,500	2,100	31
CC22K	2,930	65,000 - 90,000	36 x 50	20,000	2,100	39





## ROCKWHEEL

Rock & Concrete grinder attachments that offer precision cutting and grinding for many applications

### DEMOLITION



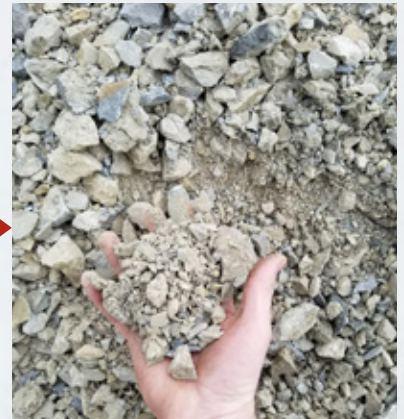
### TRENCHING



## ROCKCRUSHER

### On-Site & Mobile Crushing Attachment

With the Rockcrusher, material can be crushed directly on site. Disposal and transportation costs to stationary crushing plants are avoided. Operation cost is **less than \$1 per ton** of processed material (including fuel and maintenance costs).







## REBUILD SERVICE

**Our breaker Service Center in Texas offers rebuild service on CWT breakers and most other top-tier equipment brands**

Our commitment to transparent and open communication is at the core of our rebuilding service. We utilize a comprehensive diagnostic form and capture images of any damaged components, ensuring a highly visible, well-documented record stored in our customer database.

Before returning any repaired breakers to you, we subject them to rigorous testing and keep detailed records of their performance. Additionally, all our rebuild services come with a 90-day warranty for your peace of mind.

Complementing our rebuild facility is our investment in top-tier field service personnel. From on-site installation support to tailored training programs for dealers and end users, we provide a comprehensive suite of services that sets us apart.

## PARTS

**We understand the need to keep your investment up and running.**

Our Texas facility is fully stocked with replacement parts for Connect Work Tools and RockZone attachments.

We offer same day shipping on most parts.

In addition to standard parts, we offer customization kits for special applications:

- Combo brackets
- Solida® tool bits for most major brands
- Specialty tools
- Plating kits
- Rebuild kits







# CONNECT<sup>™</sup> WORK TOOLS

[ConnectWorkTools.com](http://ConnectWorkTools.com)

+1 920.238.6657

[Info@ConnectWorkTools.com](mailto:Info@ConnectWorkTools.com)

115 Commerce Blvd., Cleburne, TX 76033 USA



Connect Work Tools is part of Exodus Global, a family-owned company based in Superior, Wisconsin

**BLADECORE<sup>™</sup>**

**CONNECT<sup>™</sup>**  
WORK TOOLS

**OILQUICK<sup>®</sup>**

**ROCKZONE<sup>™</sup>**  
AMERICAS

**SHEARCORE<sup>™</sup>**