

CONNECTTM

WORK TOOLS



**ATTACHMENTS YOU CAN DEPEND ON
FROM PEOPLE YOU TRUST**

Connect Work Tools is part of Exodus Global, a family-owned company based in Superior, Wisconsin

CHG SERIES BREAKERS

Gas-Fired breakers for small to medium sized carriers



CHG Series Gas-Fired Breaker Specs

Model	Ft. Lb. Class	Working Weight Lbs.	Carrier Weight Lbs.	Tool Diameter In.	Impact Rate BPM	Flow Range GPM
CHG2	250	326	2,200 - 6,600	1.56	700 - 1,500	4 - 9
CHG3	400	414	4,400 - 9,900	2.15	450 - 1,150	6.6 - 11.9
CHG6	500	656	6,000 - 10,000	2.63	632 - 1,500	10 - 22
CHG7	750	746	8,500 - 12,000	2.65	600 - 1,100	10 - 22
CHG9	1,000	960	10,000 - 12,000	2.93	450 - 750	10.6 - 21.1
CHG10	1,500	1,245	12,000 - 24,000	3.32	400 - 750	11.9 - 22.5
CHG15	2,500	2,156	30,000 - 40,000	3.90	400 - 750	21.1 - 29

GET CONNECTED. STAY CONNECTED.

CHG Series Highlights

1 Auto Shut Off (ASO)

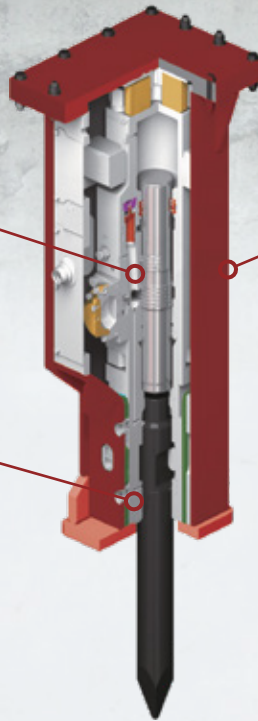
Protects hammer from blank firing. Instantly stops the hammer operation when breaking through material. Activation of ASO can be easily adjusted to the working environment.

2 Rotatable / Slip-fit Tool Bushing

Field replaceable tool bushing provides multiple wear surfaces reducing replacement costs.

3 Boxed Housing Design

CHG series breakers can come as a boxed style which protects the powercell by fully enclosing the breaker. It also helps reduce operational noise.



MODERNIZE YOUR FLEET



CONNECT 1 Features:

- GPS Location, with bread crumb history
- Temperature detection
- Burst data (trigger time)
- Utilization (daily, weekly, monthly)
- Device health alerts (low battery, signal strength, etc)
- Alarm detection (shock, motion, G force, etc)
- Daylight/Dark detection
- Event history
- Geo-fencing

CONNECT 1 is a revolutionary new wireless telematics device that gives you detailed diagnostic data on the attachment it's connected to.

Imagine being able to track location, track working time, and monitor the health status of your attachments!



CH SERIES BREAKERS

Oil-Fired breakers for medium to large sized carriers



CH Series Oil-Fired Breaker Specs

Model	Ft. Lb. Class	Working Weight Lbs.	Carrier Weight Lbs.	Tool Diameter In.	Impact Rate BPM	Flow Range GPM
CH110	2,500	2,640	32,000 - 40,000	4.33	400 - 500	21 - 26
CH120	3,000	3,200	38,000 - 48,000	4.72		26 - 39
CH130	4,000	3,725	48,000 - 55,000	5.11		34 - 39
CH140	5,500	4,620	52,000 - 60,000	5.51		45 - 53
CH150	7,500	5,380	52,000 - 75,000	5.91	350 - 450	45 - 53
CH165	10,000	6,504	60,000 - 80,000	6.5		50 - 58
CH175	12,000	8,270	80,000 - 120,000	6.89	300 - 400	55 - 63
CH180	14,000	12,130	100,000 - 140,000	7.09		66 - 81
CH205	16,000	16,530	120,000 +	8.07		79 - 106

ATTACHMENTS YOU CAN DEPEND ON FROM PEOPLE YOU TRUST

CH Series Highlights

1 **N2 Gas Charged Accumulator**

Rechargeable N₂ gas accumulator assists power stroke and reduces the surge pressure and spikes from the hydraulic circuit of the excavator.

2 **Lubrication Systems**

All CH Series Breakers offer top down lubrication, breaker mounted.

3 **Piston**

Efficient Power Transfer. The oil flow allows for optimum transfer of blow energy into the material and reduces recoil.

CH Series has the most efficient piston design for maximum energy transfer and recoil reduction, with an ideal match of tool and piston diameters. It transfers the highest shock wave into the breaking objects.

4 **Boxed Housing**

Housing reduces decibel levels and provides maximum protection to the breaker. Replaceable wear plates protect the power cell and internal housing.

5 **Top Buffer**

The top buffer acts as a vibration absorber to prevent impulses between the carrier and the breaker.

6 **Oil Flow Control Valve**

Control valve regulates the flow of hydraulic oil for maximum performance regardless of flow variations. (Large Series)

Check Valve

Check valve prevents back oil flow and reduces unnecessary spikes from the hydraulic circuit. (Medium Series)

7 **Built in Pressure Port**

Allows quick access with included adapter to easily read the operating and back pressure of hammer without removal of hoses.

8 **Compact Cylinder Design**

Allows the breaker to have a narrow profile to improve operator visibility.

9 **Wear Plates**

Wear resistant plates between cylinder, front head, and housing increase overall product durability.

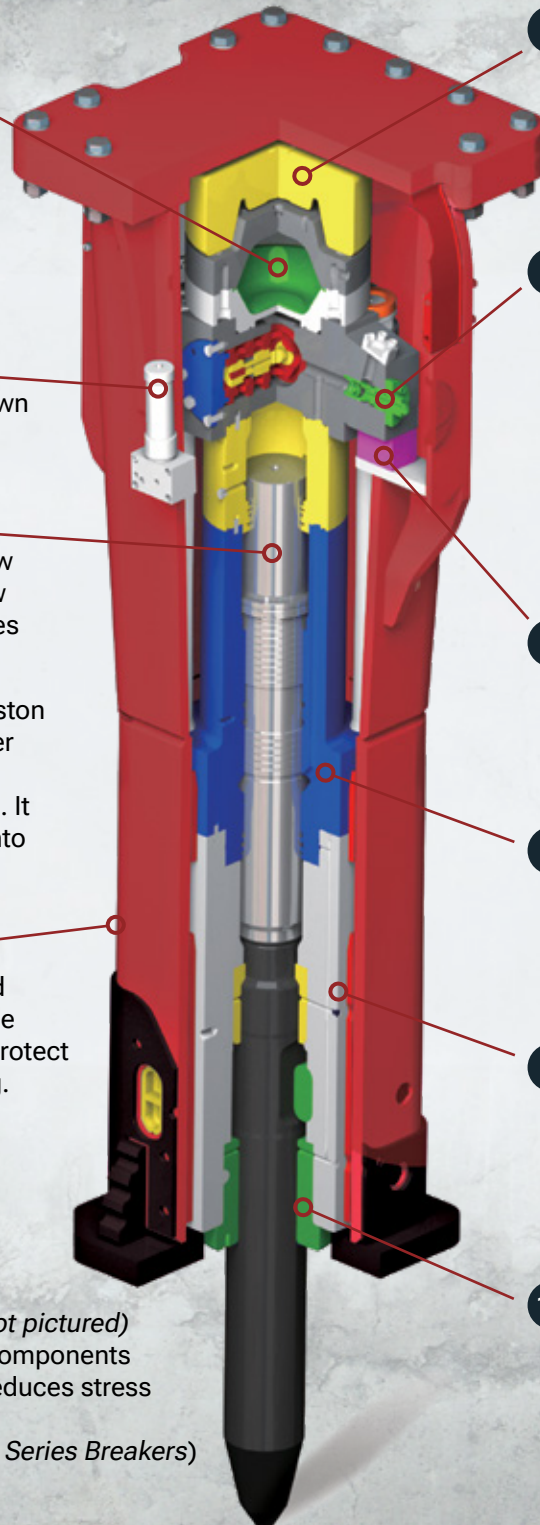
10 **Field Replaceable Tool Bushings**

The Power Cell does not need to be removed from the housing to replace the bushing. This allows for easy serviceability to keep the breaker bushing within spec and with minimal down time.

Anti-Blank Fire (ABF) System (not pictured)

ABF increases the lifespan of all components subject to wear and fatigue and reduces stress on the main carrier and breaker.

(Available on most Medium/Large Series Breakers)



CWP SERIES PULVERIZERS



As a manufacturing partner with **OilQuick Americas®**, all Connect attachments can be fitted with an automatic quick coupler

360° hydraulic rotation kit available.
Allows for changing from non-rotating to rotating

Internal speed valve allows for faster cycle times (not shown)

Cutter has 4 edges - rotate cutting edges for longer use

One-piece replaceable tooth plates
Teeth are made of Hardox Steel

CWP Series Hydraulic Pulverizer Specs

Model	Working Weight Lbs.	Carrier Weight Lbs.	Crushing Force Lbs.	Jaw Width In.	Max Jaw Opening In.	Flow Rate GPM	Max Pressure PSI
CWP2000	4,200	50,000 - 70,000	242,500	24	37	66	4,600
CWP2000R	5,300	55,000 - 70,000					
CWP3000	6,150	60,000 - 90,000	352,700	27	41	79	
CWP3000R	7,000	65,000 - 90,000					

IT'S CRUNCH TIME

PULVERIZER APPLICATIONS

- Clean sorting of concrete from rebar for recycling purposes
- Downsizing material for efficient haul off



CM SERIES SELF CONTAINED HYDRAULIC MAGNETS



OilQuick® automatic quick coupler enables attachment swapping in seconds, even with hydraulic hookups

CMID Series with Teeth

Models	Carrier weight Lbs.	Flow Rate GPM	Diameter In.	H base In.	H including chain/plate In.	Power kW	Weight Lbs.	Voltage V
CM30ID	16,000 - 30,000	13 - 32	30	10	30	2.6	1,500	220
CM34ID	20,000 - 32,000	13 - 32	34	10	30	3.4	1,940	220
CM38ID	28,000 - 40,000	15 - 35	38	10	30	4.5	2,270	220
CM42ID	34,000 - 50,000	19 - 37	42	11	32	5.5	3,200	220
CM46ID	40,000 - 56,000	22 - 37	46	11	32	6.0	3,400	220
CM50ID	48,000 - 70,000	27 - 40	50	11	32	7.5	4,100	220
CM60ID	64,000 - 90,000	32 - 40	60	12	32	12	6,400	220

ATTACHMENTS YOU CAN DEPEND ON FROM PEOPLE YOU TRUST

CM SERIES MAGNETS

- Used in demolition, scrap, waste, C & D, and railroad applications
- CM Electromagnets models are equipped with a plate for quick hitch and can be attached without manual intervention
- The teeth on the CMID are designed to rake debris, making it easier to extract ferrous materials.
- Teeth on the CMID are equipped with a quick fitting device and are easy to replace

Model: CM42ID with teeth

CMIC Series with Chains

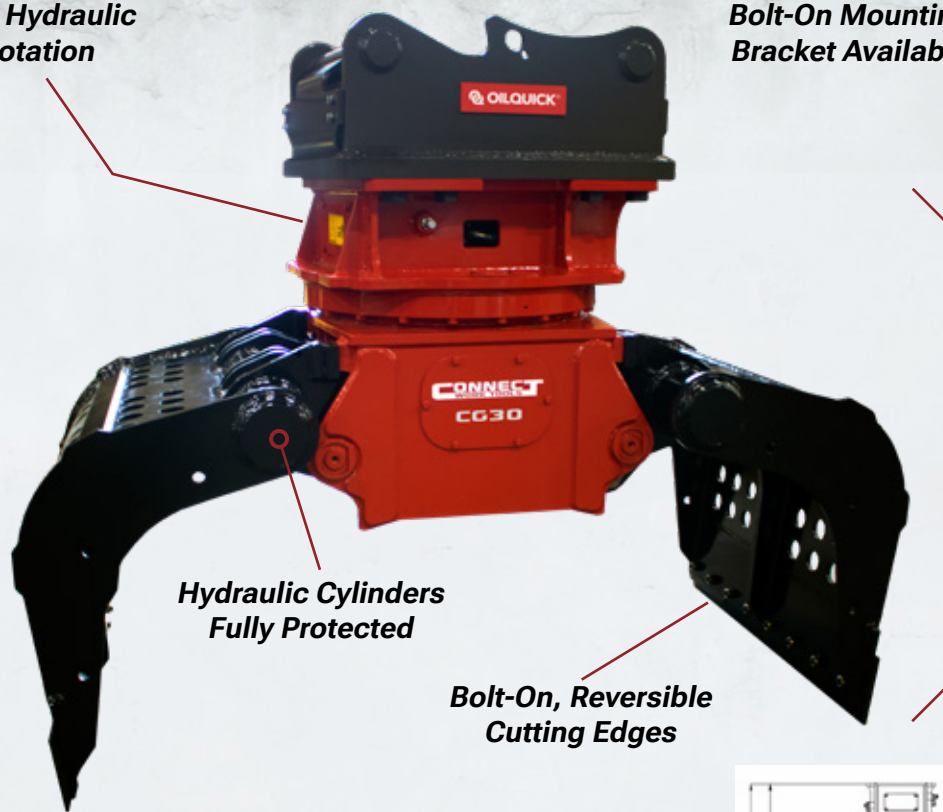
Models	Carrier weight Lbs	Flow Rate GPM	H base In.	H base In.	H with chain/plate In.	Power kW	Weight Lbs.	Voltage V
CM30IC	14,000 - 30,000	13 - 32	30	10	48	2.6	1,320	220
CM34IC	18,000 - 32,000	13 - 32	34	10	48	3.4	1,630	220
CM38IC	24,000 - 40,000	15 - 35	38	10	48	4.5	1,850	220
CM42IC	32,000 - 50,000	19 - 37	42	11	53	5.5	2,650	220
CM46IC	36,000 - 54,000	22 - 37	46	11	53	6.0	2,870	220
CM50IC	44,000 - 64,000	27 - 40	50	11	55	7.5	3,500	220
CM60IC	60,000 - 80,000	32 - 40	60	12	57	12.0	5,400	220

CG SERIES ROTATING GRAPPLES

As a manufacturing partner with **OilQuick Americas®**, all Connect attachments can be fitted with an automatic quick coupler

360° Hydraulic Rotation

Bolt-On Mounting Bracket Available

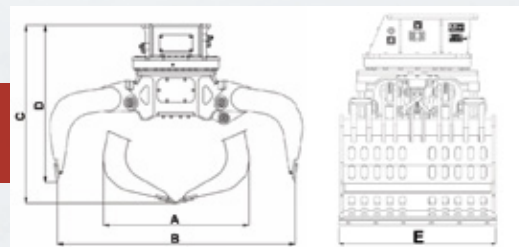


Hydraulic Cylinders Fully Protected

Bolt-On, Reversible Cutting Edges

Heavy Duty Construction

CG Series Rotating Grapple Specs



Model	Working Weight Lbs.	Carrier Weight Lbs.	Capacity Ft ³	Oil Flow GPM	Jaw Width Closed (A) In.	Max Jaw Opening (B) In.	Height Closed (C) In.	Height Opened (D) In.	Grapple Width (E) In.
CG10	1,080	10,000 - 18,000	7.1	16	38	63	40	35	18.8
CG15	2,340	18,000 - 38,000	14.2	21	42	65	50	44	33.5
CG22	3,420	38,000 - 60,000	24.7	26	48	78	55	49	41.3
CG30	4,800	60,000 - 85,000	35.3	40	58	80	58	65	43.9
CG40	5,200	85,000 - 100,000	40.1	55	62	84	66	58	52.1

**GET CONNECTED.
STAY CONNECTED.**

GRAPPLE APPLICATIONS

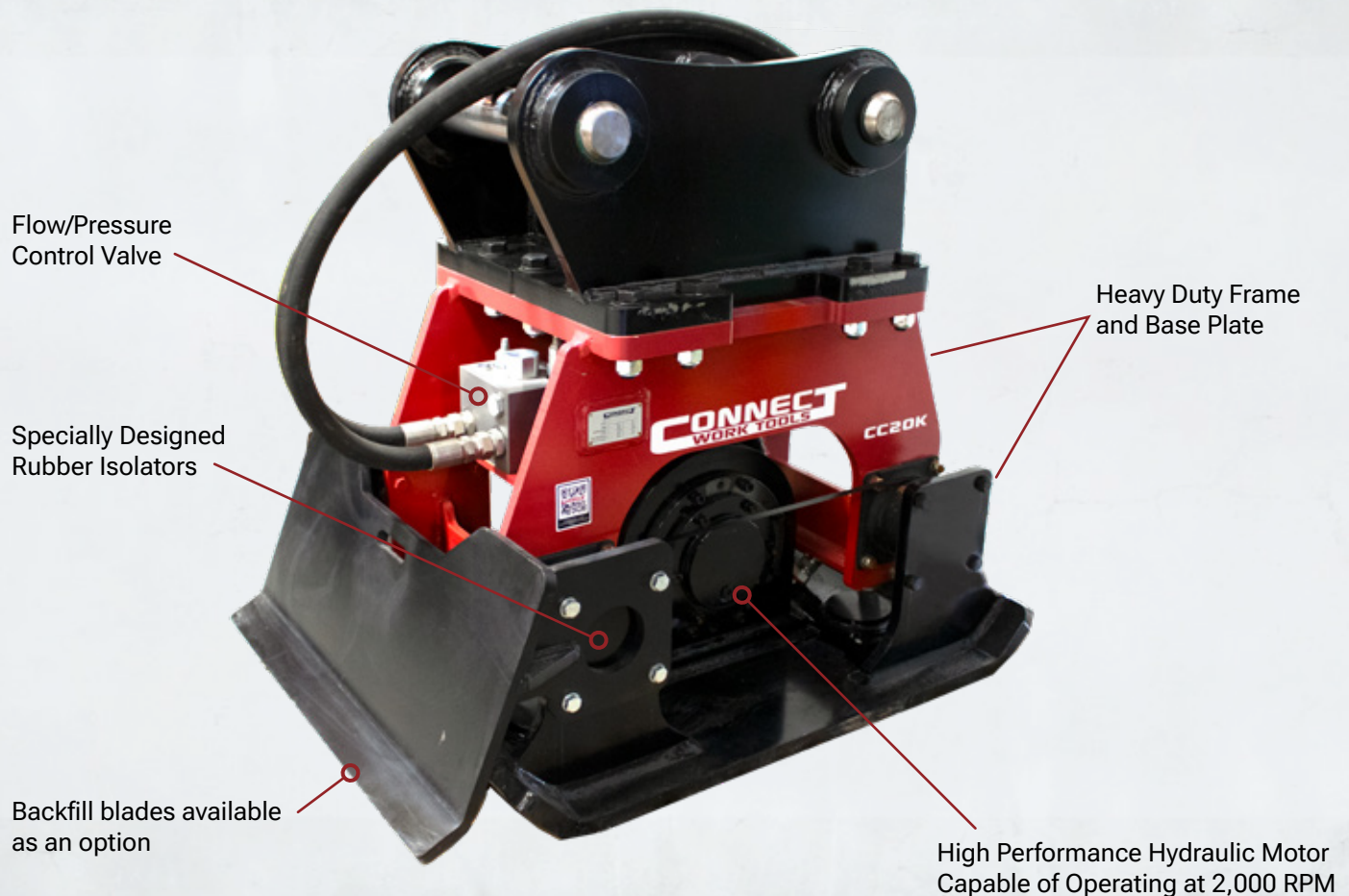
- Sorting C & D Debris
- Waste/Recycling
- Storm Clean up
- Select Demolition
- High Reach Demolition
- Landscaping
- Transfer Stations
- Road Maintenance
- Truck/Railroad Cranes



CC SERIES COMPACTORS

CWT's CC Compactor Series has integrated flow control valves, and self aligning bearings with a maintenance-free oil lubrication system.

The CC series has compatible mounting brackets for the CH Breaker and CG Grapple Series.



**TOUGH WORK
REQUIRES
TOUGHER
ATTACHMENTS**

ANY PROJECT BIG or SMALL



PLATE COMPACTORS APPLICATIONS

- Compacting soil and asphalt
- Backfilling trenches
- Preparing sites for asphalt or concrete
- Post/Pier driving
- Sea wall installations

CC Series Compactor Specs

Model	Working Weight Lbs.	Carrier Weight Lbs.	Compaction Plate Size In.	Impact Force Lbs.	Impact Frequency CPM	Flow Rate GPM
CC4K	550	6,000 - 12,000	16 x 28	3,500	2,100	11
CC8K	850	10,000 - 20,000	24 x 34	6,500	2,100	21
CC14K	1,675	28,000 - 50,000	28 x 38	11,000	2,100	26
CC20K	2,135	40,000 - 65,000	32 x 46	15,500	2,100	31
CC22K	2,930	65,000 - 90,000	36 x 50	20,000	2,100	39



ROCKWHEEL

Rock & Concrete grinder attachments that offer precision cutting and grinding for many applications

DEMOLITION



TRENCHING



ROCKCRUSHER

On-Site & Mobile Crushing Attachment

With the Rockcrusher, material can be crushed directly on site. Disposal and transportation costs to stationary crushing plants are avoided. Operation cost is **less than \$1 per ton** of processed material (including fuel and maintenance costs).



+1 814-466-7134
info@RockzoneAmericas.com
RockzoneAmericas.com



REBUILD SERVICE

Our breaker Service Center in Texas offers rebuild service on CWT breakers and most other top-tier equipment brands

Our commitment to transparent and open communication is at the core of our rebuilding service. We utilize a comprehensive diagnostic form and capture images of any damaged components, ensuring a highly visible, well-documented record stored in our customer database.

Before returning any repaired breakers to you, we subject them to rigorous testing and keep detailed records of their performance. Additionally, all our rebuild services come with a 90-day warranty for your peace of mind.

Complementing our rebuild facility is our investment in top-tier field service personnel. From on-site installation support to tailored training programs for dealers and end users, we provide a comprehensive suite of services that sets us apart.

PARTS

We understand the need to keep your investment up and running.

Our Texas facility is fully stocked with replacement parts for Connect Work Tools and RockZone attachments.

We offer same day shipping on most parts.

In addition to standard parts, we offer customization kits for special applications:

- Combo brackets
- Solida® tool bits for most major brands
- Specialty tools
- Plating kits
- Rebuild kits





CONNECTTM WORK TOOLS

ConnectWorkTools.com

+1 920.238.6657

Info@ConnectWorkTools.com

115 Commerce Blvd., Cleburne, TX 76033 USA



Connect Work Tools is part of Exodus Global, a family-owned
company based in Superior, Wisconsin

BLADECORE[™]

CONNECT[™]
WORK TOOLS

 **OILQUICK[®]**

 **ROCKZONE[™]**
AMERICAS

SHEARCORE[™]