

Gas Fired Breakers

Model: CHG7

Parts Manual CHG-Series



Part #CHGE00013

Connect Work Tools - www.connectworktools.com - 920.238.6657



Table of Contents

Contact Information	4
1.0 Equipment Identification	
1.1 Location of Serial Number	5
1.2 Owner's Record of Equipment	5
2.0 Decals	6
3.0 Base Plates	8
4.0 CHG Hammer	
4.1 Hammer	10
4.2 Back Head Sub Assembly	11
4.3 Cylinder Sub Assembly	12
4.4 Front Head Sub Assembly	14
4.5 Side Rod Set	15
5.0 CHG7 Housing	
5.1 Box Housing	16

Contact Information



Connect Work Tools
155 Main Street
Superior, WI 54880

E-mail: info@connectworktools.com
Main Phone: 920-238-6657
Fax: 715-395-3703

Contact your Connect Work Tools Representative or the Connect Work Tools Parts Department for replacement manuals. Inquiries regarding the content of this manual must include the release date shown below.

Information in this manual is subject to change without advance notice.

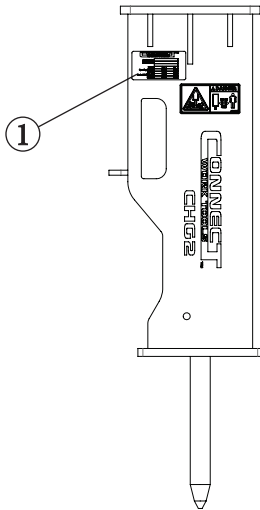
Table 1.1 About this manual

Document ID No.	CHGE00013
Type	Parts
Release Date	January 2024
Product Name	Gas fired Breakers
Series	CHG
Applicable Models	CHGE
Years of Manufacture	2024 & above

1.0 Equipment Identification

1.1 Location of the Serial Number Decal

Models: CHG2/CHG3/CHG6/CHG7/
CHG9/ CHG10/CHG15



The Serial Equipment Identification Decal is affixed to the side of the housing box. It provides the following information:

- Serial Number
- Model
- Part Number
- Weight
- Operating Pressure
- Oil Flow
- Carrier Relief Pressure
- Nitrogen

****Note: Prior to ordering parts, it's important to confirm your model and serial number**

CONNECT™ WORK TOOLS			
Serial Number:			
Model Number:			
Weight:	kg		lb
Operating Pressure:	bar		psi
Oil Flow:	l/min		gpm
Carrier Relief Pressure:	bar		psi
Nitrogen:	bar		psi

1.2 Owner's Record of the Equipment

Record the Model and Serial Number from the Serial Equipment Identification Tag to the space provided below. Indicate the date in which the Connect Work Tools equipment was placed into service.

Model CHG2: CHG2
 Model CHG3: CHG3
 Model CHG6: CHG6
 Model CHG7: CHG7
 Model CHG9: CHG9
 Model CHG10: CHG10
 Model CHG15: CHG15

Serial Number: _____

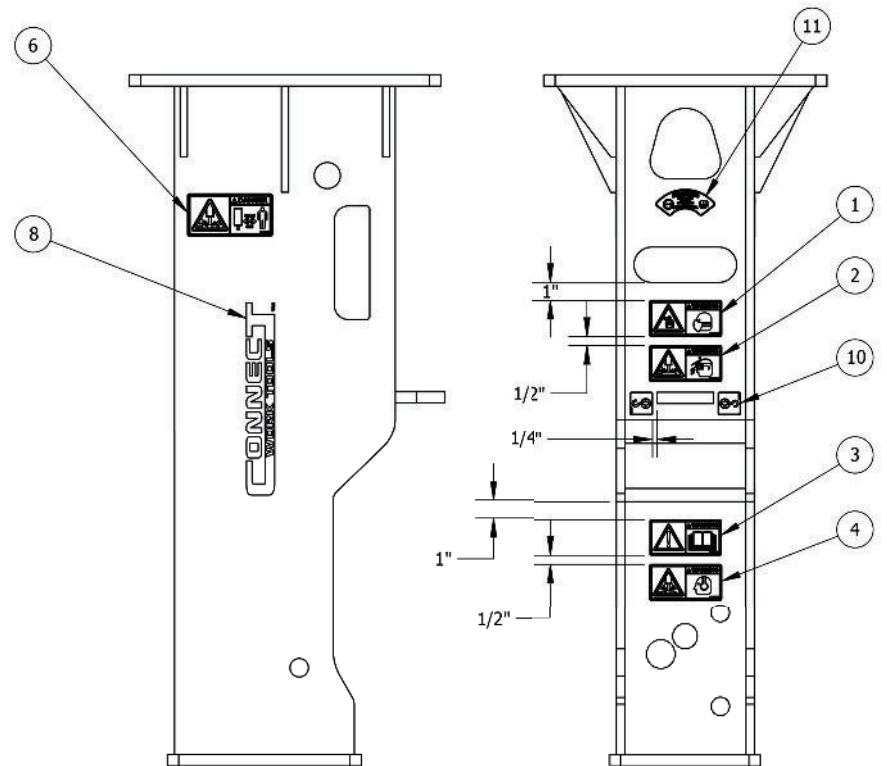
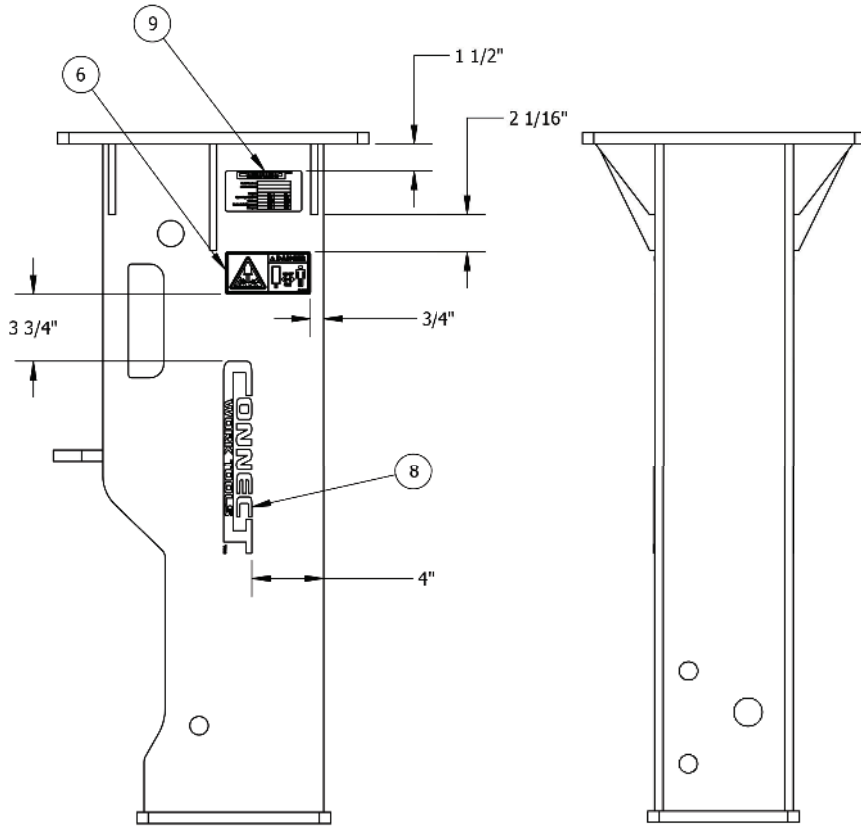
In Service Date: _____

Your Connect Work Tools representative requires this information to better assist you with questions regarding parts, warranty, operation, maintenance, or repair.

Your equipment must be registered by your local Distributor at the time of sale.

Product Registration Date: _____

2.0 Decals



2.0 Decals

All decals pictured are included in decal kits (with exception of No. 10)

2.1 Standard Decals



1. Part Number 16-00076 - Decal Warning Dust



2. Part Number 16-00077 - Decal Warning Flying Objects



3. Part Number 16-00078 - Decal Warning Read Manual



4. Part Number 16-00079 - Decal Warning Noise



5. Part Number 16-00080 - Decal Grease Point



6. Part Number 16-00086 - Decal Warning Safe Distance



7. Part Number CHG00006 - Decal CHG7



8. Part Number CHE00166 - Decal Connect Logo 11" - CHG2/CHG3/CHG6/CHG7
Part Number CHE00109 - Decal Connect Logo 18" - CHG9/CHG10/CHG15



9. Part Number CHE00127 - Decal SN Plate (Not included in Decal Kit)



10. Part Number 16-00082 - Decal Lift Point

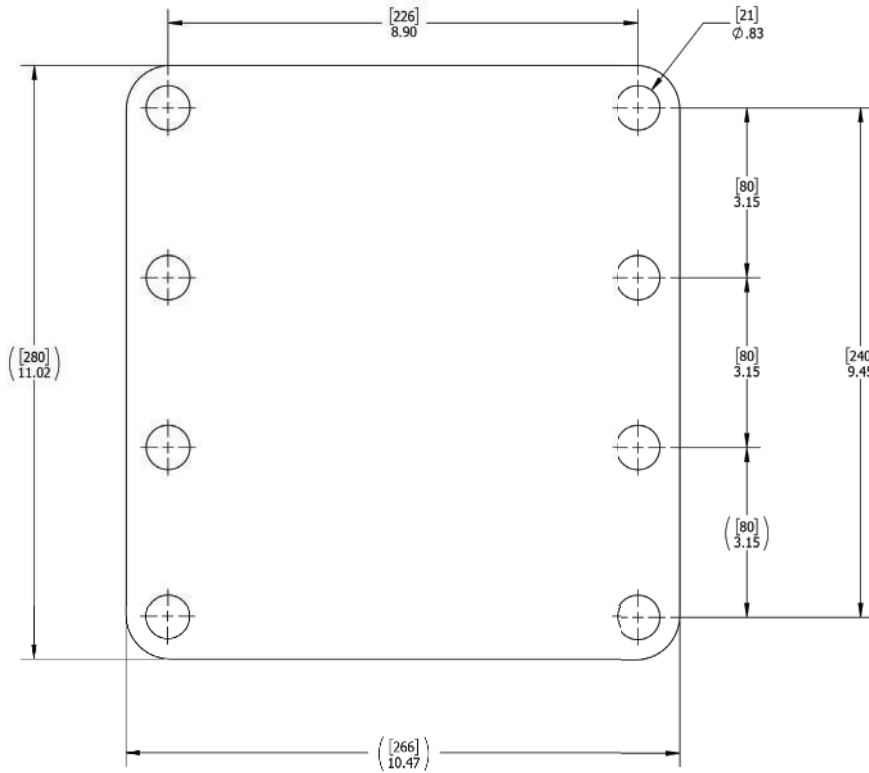


11. Part Number CHE00111 - Decal Warning Nitrogen

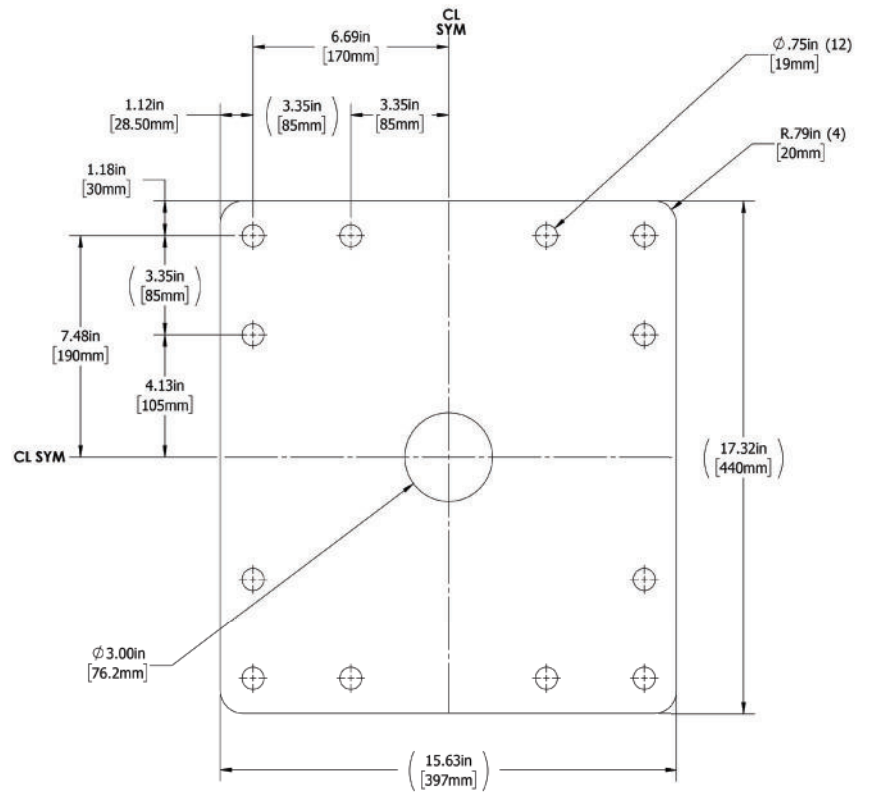


12. Part Number CHE00596 - Decal Warning Anti-Blank Fire

3.0 Base Plates

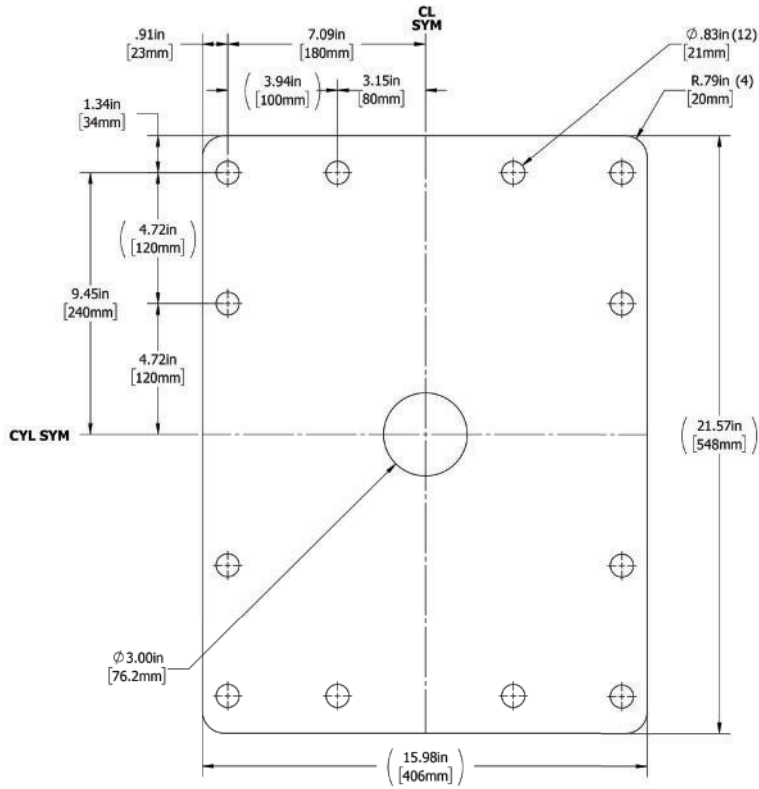


CHGE00101 - CHG2 - BASE PLATE

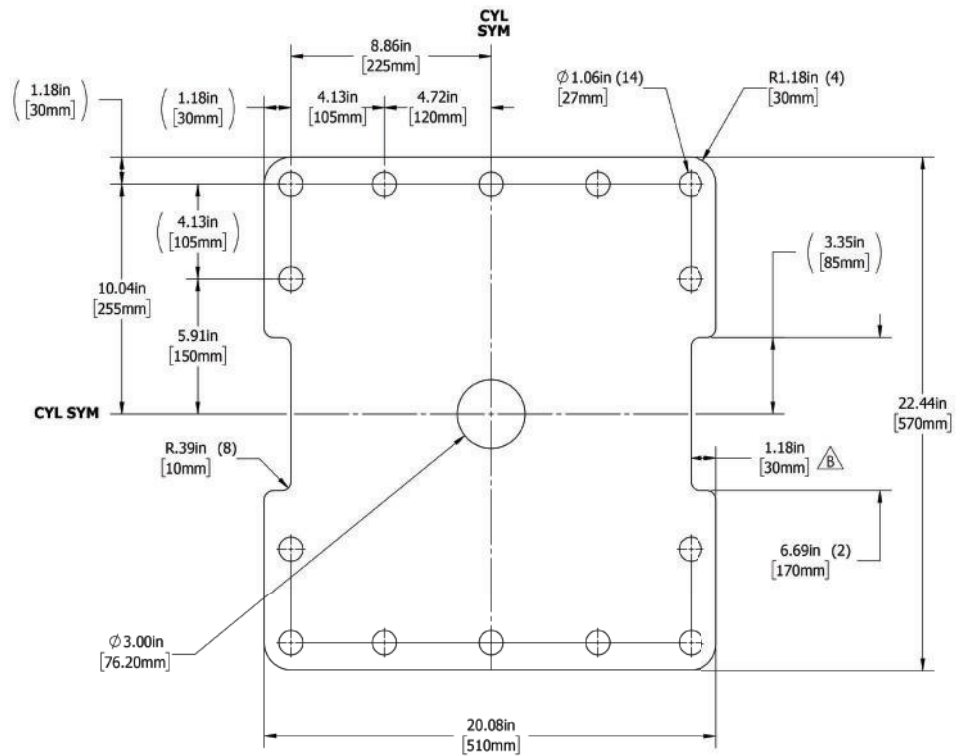


CHE00100 - CHG3/CHG6/CHG7 - BASE PLATE

3.0 Base Plates



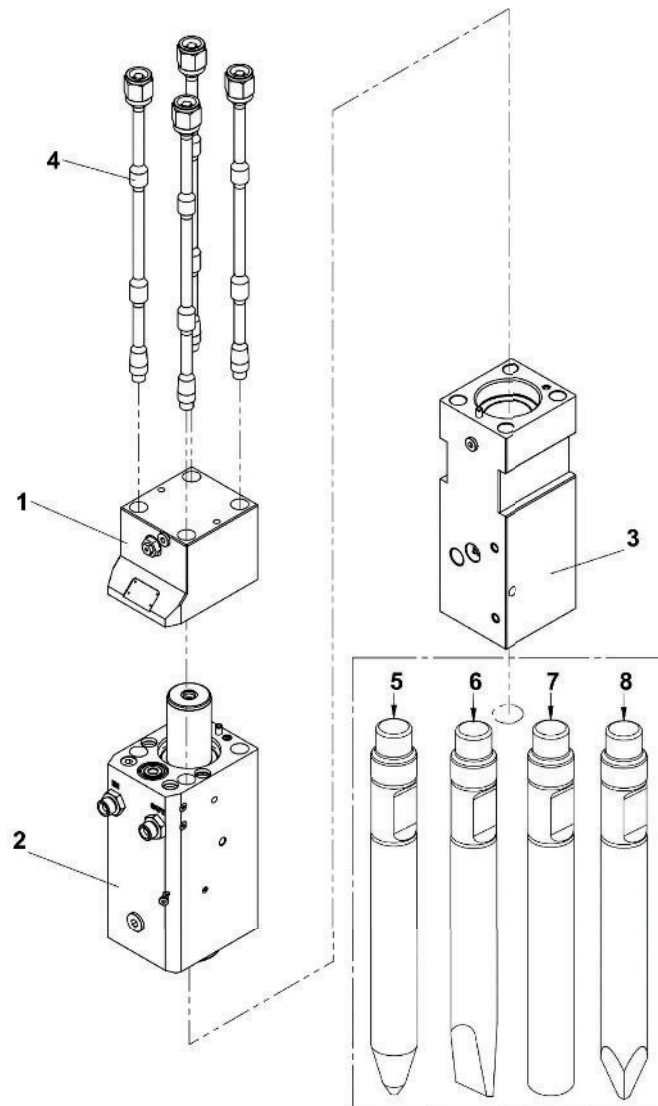
CHE00101 - CHG9/CHG10 - BASE PLATE



CHE00103 - CHG15 - BASE PLATE

4.0 CHG7 Hammer

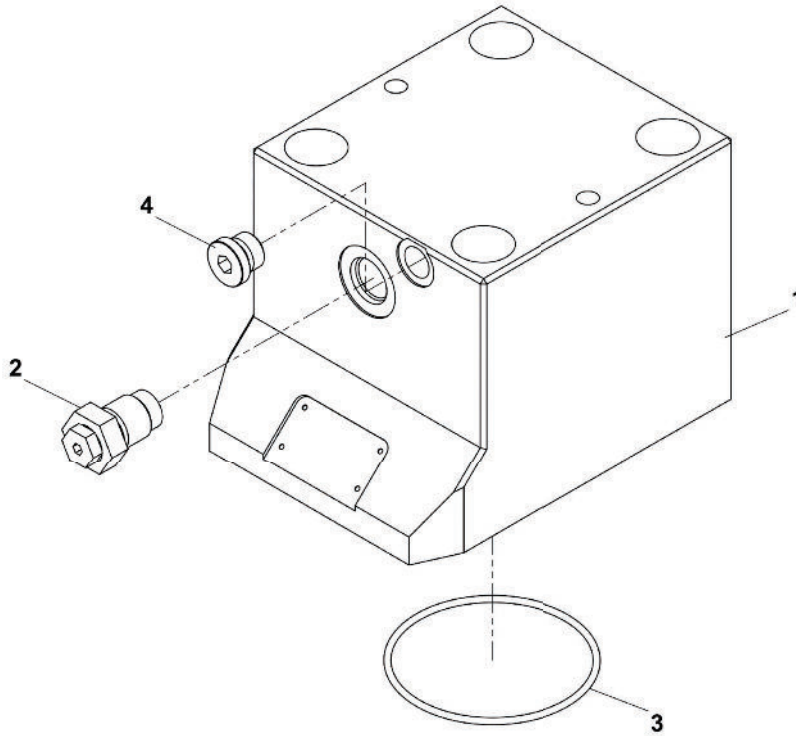
4-1. Hammer



NO.	PART NO.	PART NAME	QTY	REMARKS
	CHG0720000	HAMMER TOTAL ASSEMBLY	1	
1	CHG0721000	BACK HEAD SUB ASSEMBLY	1	
2	CHG0722000	CYLINDER SUB ASSEMBLY	1	
3	CHG0723000	FRONT HEAD SUB ASSEMBLY	1	
4	CHG0724000	SIDE ROD SET	4	
5	CHG0725000	CHG7 CHISEL	1	
6	CHG0726000	CHG7 MOIL	1	
7	CHG0727000	CHG7 CONE	1	
8	CHG0728000	CHG7 BLUNT	1	
	CHG0730000	CHG7 SEAL KIT	1	

4.0 CHG7 Hammer

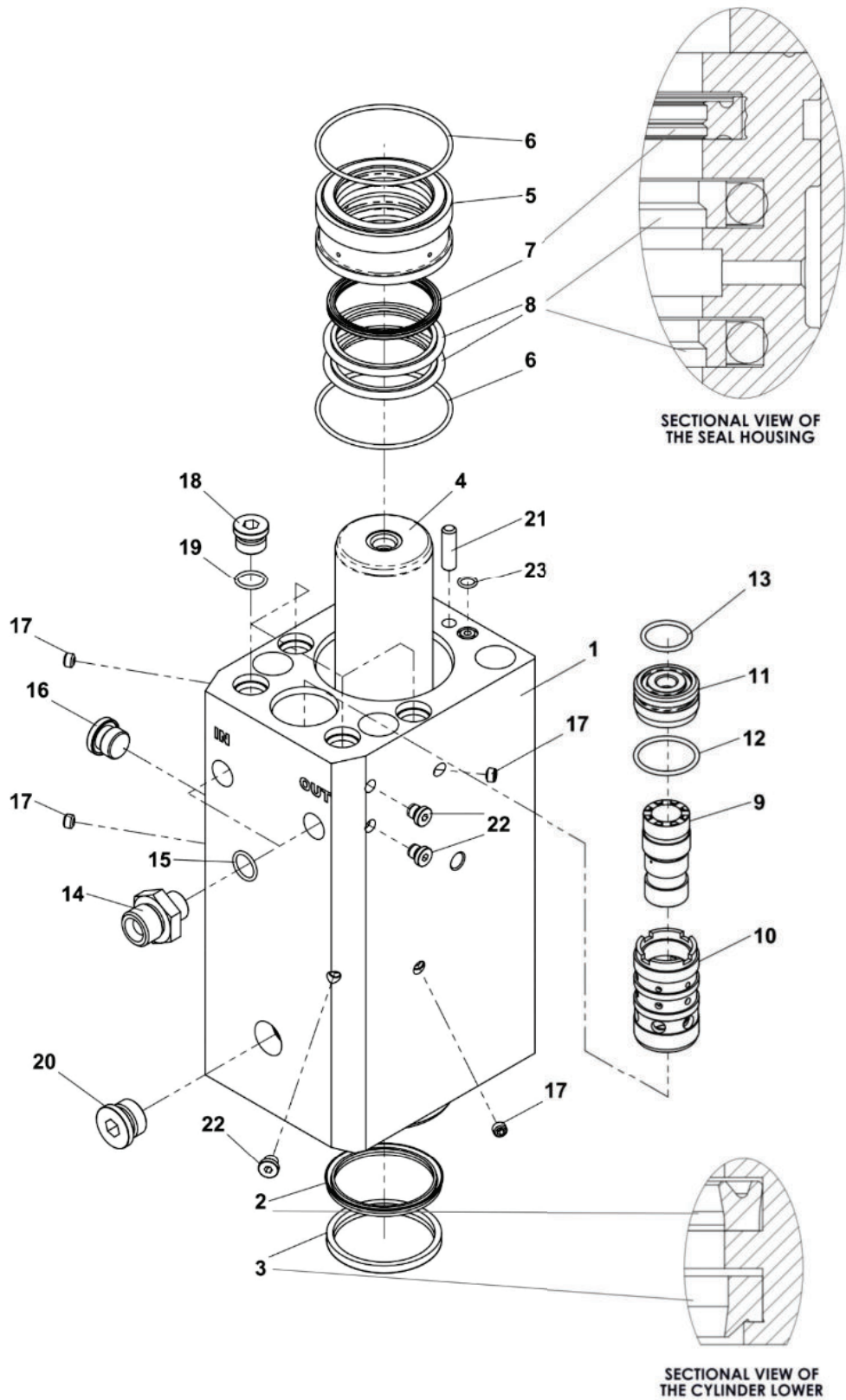
4-2. Back Head Sub Assembly



NO.	PART NO.	PART NAME	QTY	REMARKS
	CHG0721000	BACK HEAD SUB ASSEMBLY	1	
1	CHG0721001	CHG7 BACK HEAD	1	
2	CHG0201003	GAS CHARGING VALVE ASSEMBLY	1	
3	CHG0721003	O-RING	1	PART OF SEAL KIT
4	CHG0721004	PLUG	1	

4.0 CHG7 Hammer

4-3. Cylinder Sub Assembly

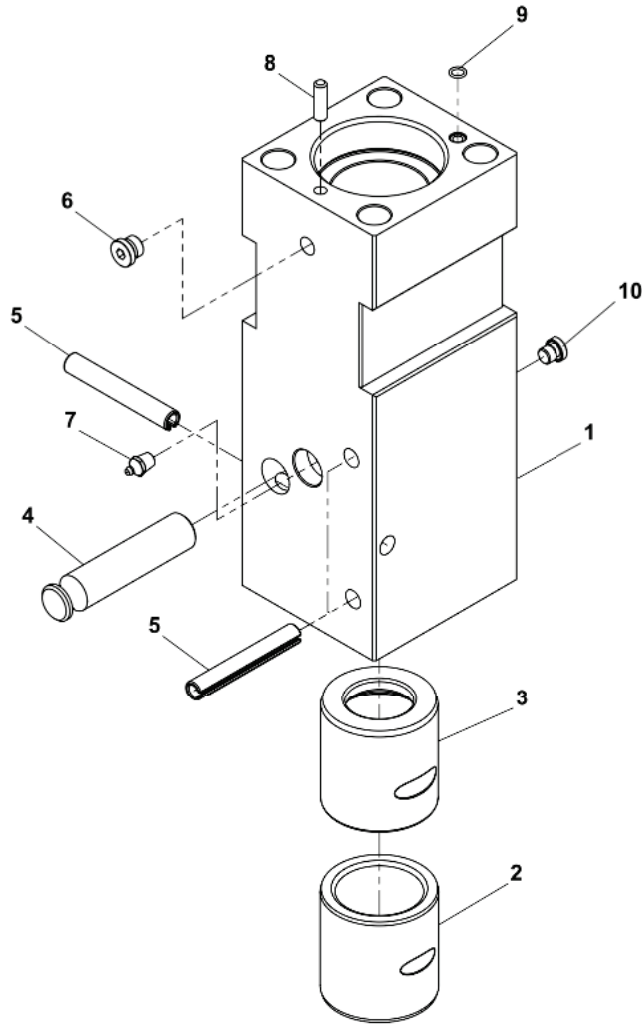


4.0 CHG7 Hammer

NO.	PART NO.	PART NAME	QTY	REMARKS
	CHG0722000	CYLINDER SUB ASSEMBLY	1	
1	CHG0722001	CHG7 CYLINDER	1	
2	CHG0722002	U-PACKING	1	PART OF SEAL KIT
3	CHG0722003	WIPER	1	PART OF SEAL KIT
4	CHG0722004	CHG7 PISTON	1	
5	CHG0722005	CHG7 SEAL HOUSING	1	
6	CHG0721003	O-RING	2	PART OF SEAL KIT
7	CHG0722007	GAS SEAL	1	PART OF SEAL KIT
8	CHG0722008	STEP SEAL	2	PART OF SEAL KIT
9	CHG0722009	OPER V/V COVER	1	
10	CHG0722010	OPER V/V GUIDE	1	
11	CHG0722011	OPER V/V SPOOL	1	
12	CHG0722012	O-RING	1	PART OF SEAL KIT
13	CHG0722013	O-RING	1	PART OF SEAL KIT
14	CHG0722024	ADAPTER	2	PF 3/4" - OPTION
15	CHG0722026	O-RING	2	OPTION
16	CHG0722016	SOCKET PLUG	1	
17	CHG0722017	SET SCREW	4	
18	CHG0722018	SOCKET PLUG	4	
19	CHG0722019	O-RING	4	PART OF SEAL KIT
20	CHG0602014	SOCKET PLUG	1	
21	CHG0600011	GUIDE PIN	1	
22	CHG0602013	SOCKET PLUG	3	
23	CHG0722023	O-RING	1	PART OF SEAL KIT

4.0 CHG7 Hammer

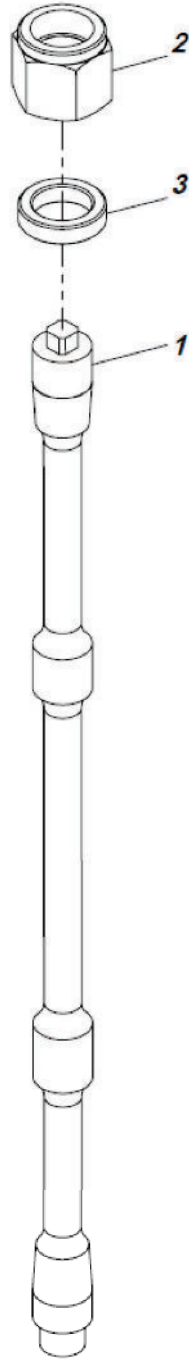
4-4. Front Head Sub Assembly



NO.	PART NO.	PART NAME	QTY	REMARKS
	CHG0723000	FRONT HEAD SUB ASSEMBLY	1	
1	CHG0723001	CHG7 FRONT HEAD	1	
2	CHG0723002	CHG7 TOOL BUSHING	1	
3	CHG0723003	CHG7 THRUST RING	1	
4	CHG0723004	CHG7 TOOL PIN	1	
5	CHG0603006	SPRING PIN	3	
6	CHG0721004	SOCKET PLUG	1	
7	CHG0203004	GREASE NIPPLE	1	
8	CHG0203007	GUIDE PIN	1	
9	CHG0202011	SOCKET PLUG	1	PART OF SEAL KIT
10	CHG0923005	SPRING PIN	1	

4.0 CHG7 Hammer

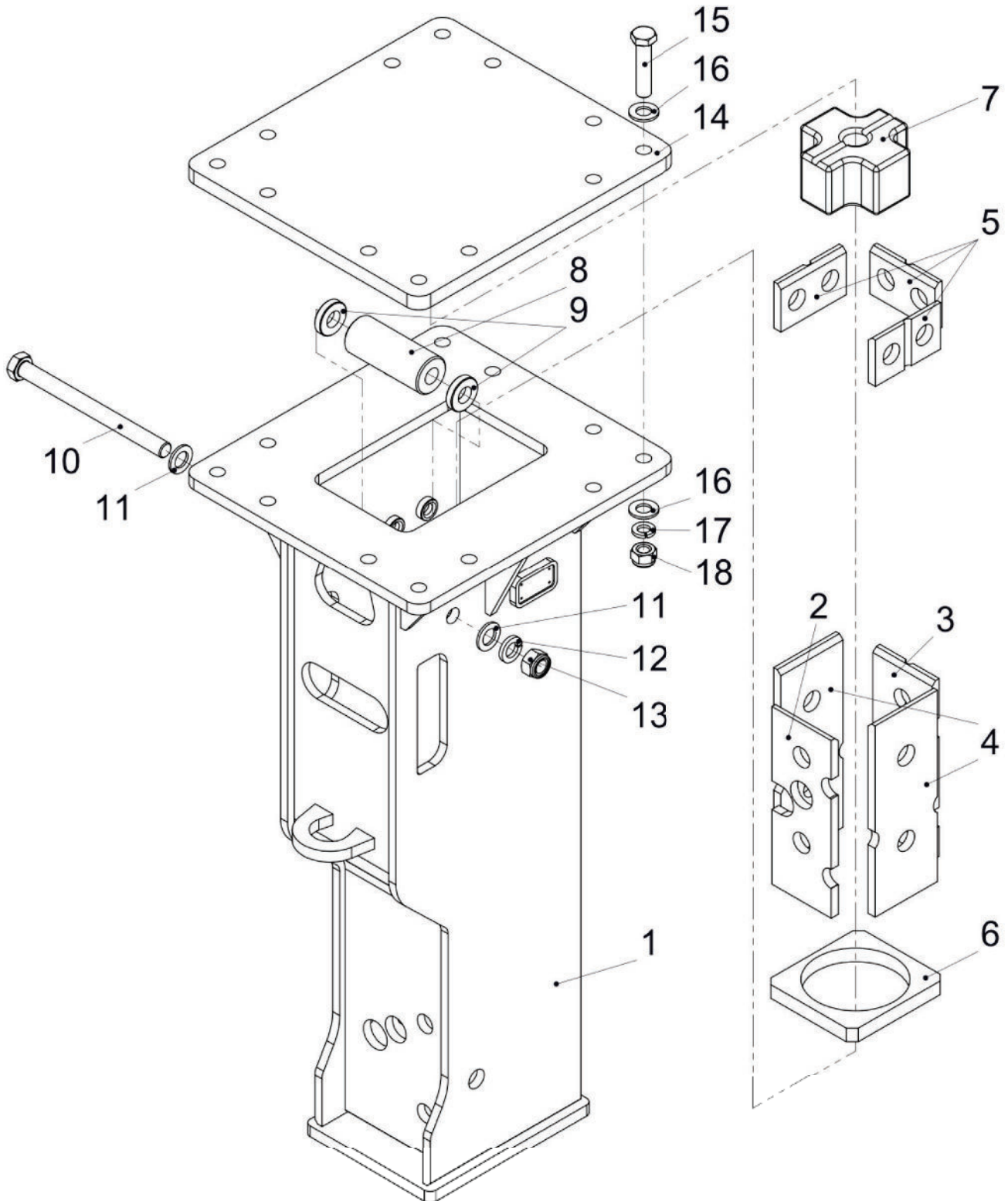
4-5. Side Rod Set



NO.	PART NO.	PART NAME	QTY	REMARKS
	CHG0704000	SIDE ROD SET	4	
1	CHG0724001	CHG7 SIDE ROD	4	
2	CHG0724002	CHG7 SIDE ROD NUT	4	
3	CHG0724003	CHG7 SIDE ROD NUT	4	

5.0 CHG7 Housing

5-1. Box Housing



5.0 CHG7 Housing

NO.	PART NO.	PART NAME	QTY	REMARKS
	CHG0758000	HOUSING TOTAL ASSEMBLY	1	
101	CHG0725001	HOUSING WELD ASSEMBLY	1	
102	CHG0751003	WEARING PLATE	1	
103	CHG0751004	WEARING PLATE	1	
104	CHG0751005	WEARING PLATE	2	
105	CHG0751006	WEARING PLATE	3	
106	CHG0751007	BASE BUFFER	1	
107	CHG0654005	TOP BUFFER	1	
108	CHG0751014	SIDE BUFFER	1	
109	CHG0751013	SIDE WASHER	2	
110	CHG0751015	HEX BOLT	1	
111	CHG0751018	PLAIN WASHER	2	
112	CHG0751017	SPRING WASHER	1	
113	CHG0751016	NYLON LOCK NUT	1	
114	CHG0654011	TOP COVER PLATE	1	OPTION
115	CHG0654012	HEX. BOLT	12	
116	CHG0751009	PLAIN WASHER	24	
117	CHG0751011	SPRING WASHER	12	
118	CHG0751012	NYLON LOCK NUT	12	



CHG Series Gas Fired Hammers Limited Warranty

Connect Work Tools offers this warranty to owners of new Connect Work Tools equipment that, after delivery and placement into service by the first user, the authorized Connect Work Tools Distributor in whose service area the product is operated will repair or replace any part that fails because of defects in material or workmanship. Connect Work Tools warranty covers new or original equipment only. This warranty does not apply to used equipment, that has been in service beyond the new product warranty period.

STANDARD RATE SCHEDULE

The following rate schedule is in effect and will be applied when evaluating and processing all related requests.

Warranty Coverage:

CHG2 - CHG3 - CHG6 - CHG7 - CHG9 - CHG10 - CHG15

Months	Parts	Labor
0-12	No Change	No Change

Connect Work Tools guarantees that the product shall be free from defects in materials or workmanship for a period of 12 months of installation date or 18 months from invoice date, whatever comes first.

Before submitting a warranty claim, make sure the attachment qualifies and meets the guidelines for warranty consideration.

Prior to performing a warranty action and submitting Connect Work Tools warranty claim the distributor must obtain pre-approval and a warranty claim number.

Contact the Connect Work Tools Customer Service Department at: 920-238-6657 or Email: service@connectworktools.com

CONNECTTM
WORK TOOLS

920.238.6657

www.connectworktools.com

