



# CC Series Compactors

## Models

CC4K

CC8K

CC14K

CC20K

CC22K

**Parts & Operator's Manual CC-Series**

**Parts, Safety, Operation & Maintenance**



Part #CCE00044

Connect Work Tools - [www.connectworktools.com](http://www.connectworktools.com) - 920.238.6657

## Contact Information



**Connect Work Tools**  
**155 Main Street**  
**Superior, WI 54880**

**E-mail: [info@connectworktools.com](mailto:info@connectworktools.com)**  
**Main Phone: 920-238-6657**  
**Fax: 715-395-3703**

Contact your Connect Work Tools Representative or the Connect Work Tools Parts Department for replacement manuals.  
Inquiries regarding the content of this manual must include the release date shown below.

**Information in this manual is subject to change without advance notice.**

**Table 1.1 About this manual**

Document ID No.	CCE00044
Type	Parts, Safety, Operation and Maintenance
Release Date	March 2021
Product Name	Hydraulic Compactor
Series	CC
Applicable Models	CC4K/CC8K/CC14K/CC20K/ CC22K
Years of Manufacture	2021 & above

## Safety Information

### Safety Statements and Hazard Alerts

Within this manual, you will find important safety information. The information will include specific information related to the Connect Work Tools attachment as well as the carrier. It is imperative that operators, maintenance personnel, or individuals loading or transporting the equipment read and understand the safety contents of this manual, as well as all safety decals and labels. Safety decals and labels must be kept legible and intact on the attachment. Replace damaged, missing or illegible safety labels or decals.

### Purpose of Safety Messages

The reason safety messages and information has been included in this manual is most importantly to protect you and those individuals in the work area. Additionally, it is provided to eliminate damage to surroundings, attachments and the carrier due to incorrect operation and use or lack of maintenance of the equipment.

### Key Points before operating equipment

1. Know your surroundings, survey the area prior to operation.
2. Know where the potential hazards are within the work area and notify personnel of those hazards.

Safety messages provide the following information:

1. **Alert** personnel to potential hazards
2. **Identify** the nature of the hazard
3. **Describe** the severity of the hazard, if encountered
4. **Instruct** how to avoid the hazard

**ATTENTION, BECOME ALERT, YOUR SAFETY IS INVOLVED.**

### Signal Words

Safety symbols and signal words, as shown below, are used to emphasize all operator, maintenance and repair actions which, if not strictly followed, could result in a life-threatening situation, bodily injury or damage to equipment.



*This is the safety alert symbol. It is used to alert you to potential personal injury hazards. Obey all safety messages that follow this symbol to avoid possible injury or death.*



*This safety alert and signal word indicates an imminently hazardous situation which, if not avoided, will result in death or serious injury.*



*This safety alert and signal word indicates a potentially hazardous situation which, if not avoided, could result in death or serious injury.*



*This safety alert and signal word indicates a potentially hazardous situation which, if not avoided, may result in minor or moderate injury.*



*This signal word indicates a potentially hazardous situation which, if not avoided, may result in property damage or damage to the equipment.*



*This signal word indicates a situation which, if not avoided, may result in damage to the equipment.*

Fig. SI.1 Safety Signal Words

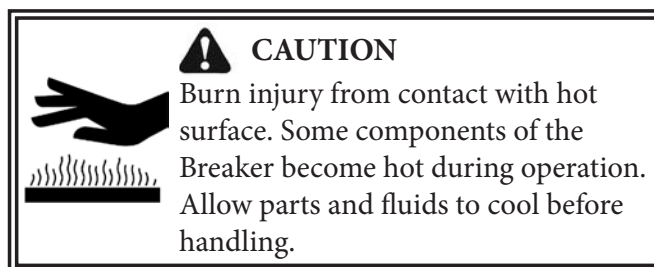


Fig. SI.2 Safety Message

### Signal Words Used for Non-Hazard Messages

This manual contains other message types that use the signal words IMPORTANT and NOTE. These are informational messages that provide instructions and are not considered hazardous to workers.

**IMPORTANT** - Identify instructions that if not followed, may damage the equipment or diminish the service life of components.

**NOTE** - Highlight suggestions, which will enhance installation, reliability, or operation.

## Safety Information

### Safety, Information and Identification Labels

Information labels affixed to the Connect Work Tools equipment include safety warnings, identification and instructions important to operation and service. Refer to Figure "L-5" for their location on the equipment.

Keep all safety & identification labels clean. Words and illustrations must be legible.

Before operating this equipment, replace damaged or missing labels. For replacement, refer to the appropriate Parts Manual for identification.

**Fig.**

**Label**

**Description**

Fig. L-1



**READ INSTRUCTIONS** - Decal directs personnel to the manual for further information/instructions.

Fig. L-2



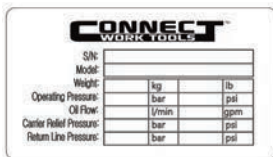
**MODEL** - Decal identifies the specific model.

Fig. L-3



**CONNECT WORK TOOLS LOGO** - This decal is the Connect Work Tools identifier and is a registered trademark of Connect Work Tools.

Fig. L-4



**SERIAL PLATE** - Contains identifying information about the equipment, including: Manufacturer's name, serial number, model number, part number, product weight, operating pressure, oil flow, carrier relief pressure, and nitrogen pressure.

## Safety Information

### Label Positions

#### CC Compactor Decal Placement

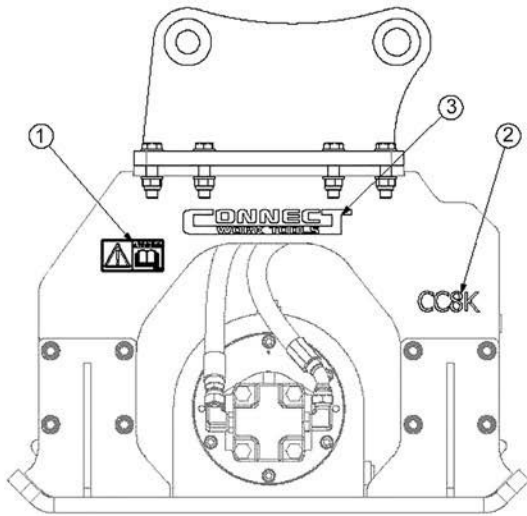


Fig. L5-1

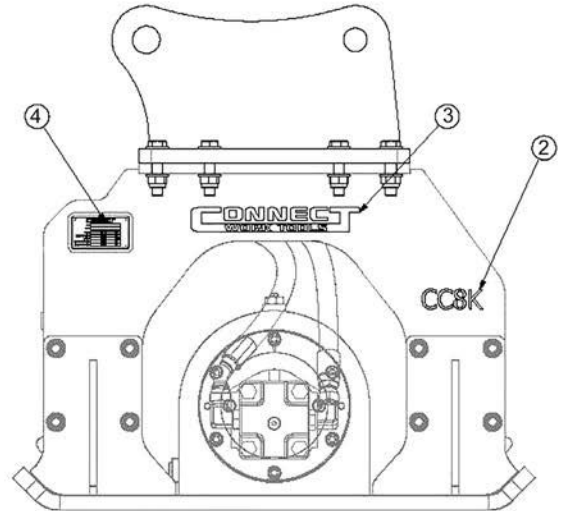


Fig. L5-2

# Safety Information

## Meaning of Pictograms

Pictograms are used to rapidly communicate information. For the purposes of this manual and labels affixed to the Connect Work Tools equipment, pictograms are defined as follows:



- Read the Manual
- Refer to the manual for further details
- Procedures are explained in the manual



Read the Service Manual for Additional Information



- Crush Point



- Pinch Point



Moving part (in direction indicated by arrow)



- Falling object
- Unsupported loads

### Personal Protection Equipment



- Hearing Protection



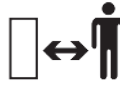
- Safety Eyewear



- Gloves



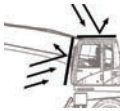
- Safety Shoes
- Falling Part



Personnel maintain a safe distance from breaker



Fragments/debris becoming airborne projectiles



Protective guards required on cab when operating this work tool



Leaking fluid under pressure



Hot Surfaces



Gas/Oil under pressure



Shut off carrier & remove key before servicing



Identifies lift point



Any figure displaying an X-out or a circle with a diagonal slash is a prohibited action



Prohibited actions must be avoided to prevent injury and/or equipment damage



The check mark is used to indicate correct actions or approved methods that are recommended

Fig. SI.3 Meaning of Pictograms



## Safety Information

### Attention Read the Manual



Improper installation, operation or maintenance of the Connect Work Tools Equipment could result in serious injury or death. Only qualified operators may operate the Connect Work Tools equipment. Personnel responsible for the maintenance of the Connect Work Tools equipment or its systems, including inspection, installation or adjustments must also be qualified. Operators and personnel responsible for the maintenance of this equipment should read this manual. Other manuals, such as those published by the machinery used in support of the Connect Work Tools equipment, should also be read.

### General Construction Safety

Always follow procedures that promote safe conditions for workers and bystanders. The standard safety precautions expected and required of those working in construction shall include, but not limited to:

- Locating existing underground service and utility lines
- Establishing pedestrian barriers
- Using personal protection equipment appropriate to working conditions, etc.

### Owner's Responsibilities

Ensure that only qualified personnel operate and service the Connect Work Tools equipment.

Ensure personal protection equipment is available to personnel and enforce the use of PPE.

Ensure that carriers are in safe, working order and all guards and safety equipment is installed and in operating condition.

Ensure safety-related materials such as instructions and including this manual are kept in a convenient location so that they are easily accessible to operators and maintenance personnel.

### Personal Protective Equipment (PPE)



Personnel operating or nearby the equipment and exposed to the hazard of falling, flying and splashing objects, or exposed to harmful dusts, fumes, mists, vapors, or gases shall use the particular personal protective equipment (PPE) necessary to protect them from the hazard. Such PPE may include safety eyewear, face shield, hearing protection, safety footwear, gloves and dust mask. Supervisors shall review proper PPE selection and ensure PPE is made available to personnel. Personnel are responsible for wearing PPE as directed by the supervisor.

### Protective Equipment - Guarding



Construction equipment designed with guards shall have guards in place when equipment is in use. Guards are fitted to the equipment to protect against unsafe situations that could not be eliminated through design measures. Where it was not possible to prevent an unsafe situation by means of a guard, safety messages appear on the equipment, warning personnel of a hazardous condition.

Guards shall not be removed unless for the purpose of inspection and service of components. All guards must be reinstalled after service or adjustments are completed. Do not operate the Connect Work Tools attachments without guards.

Additional guarding, not included with the Connect Work Tools equipment, is necessary at the operator's station to protect the operator and other nearby personnel against flying debris from material being cut or demolished. Do not handle, demolish or cut material overhead without proper guards installed.

To prevent accidental start up, the control switch shall be located in a protected area that is guarded and makes it difficult to accidentally operate the equipment.

## Safety Information

### Unapproved Modifications



In order to provide and maintain efficient production and reliable service, while ensuring operator safety, the Connect Work Tools equipment may not be modified or used for any other purpose other than, for which it was intended. Use of the Connect Work Tools equipment, other than those specified in this manual, may place personnel at risk of injury and/or may subject the equipment to damage. The Connect Work Tools equipment shall not be modified or used in unapproved applications unless written consent is received from the Connect Work Tools Engineering Department.

### **WARNING**

**SERIOUS INJURY OR DEATH COULD RESULT FROM ATTEMPTING to support the driven material.**

**PERSONNEL WHO ATTEMPT TO support the driven material CAN BE STRUCK OR CRUSHED.**

**Do not ATTEMPT to support the driven material.**



One note of caution; the forces generated and the methods used while driving with a vibratory device preclude the calculation of "bearing loads" for a piling or sheet of material. **DO NOT USE THE COMPACTOR IN APPLICATIONS WHERE A BEARING LOAD IS SPECIFIED.**



# Table of Contents



## Operator's Manual Section

Safety Information .....	103
Table of Contents .....	109
<b>General Information</b>	
1. Introduction .....	1
2. Safety Precautions .....	1
<b>1.0 Specifications</b>	
1.1 Compactor Specifications .....	2
1.2 Compactor Layout .....	2
1.3 Characteristics .....	2
<b>2.0 Installation and Operating Instructions</b>	
2.1 Operation Instructions .....	3
2.2 Mounting Plate Pattern and Dimensions .....	4
2.3 Mounting and Dismounting .....	6
2.4 Hoses .....	7
<b>3.0 Safety Precautions</b>	
3.1 Cautions .....	9
3.2 Operation .....	10
<b>4.0 Inspection and Maintenance</b>	
4.1 Pre-Inspection .....	11
4.2 Disassembling .....	11
4.3 Assembling .....	11
4.4 Normal Inspection .....	12
4.5 Maintenance Schedule .....	12
<b>5.0 Hydraulic Circuit</b>	
5.1 Hydraulic Circuit .....	13
<b>6.0 Troubleshooting</b>	
6.1 Troubleshooting .....	14

## Parts Manual Section

<b>7.0 Equipment Identification</b>	
7.1 Equipment Identification .....	17
<b>8.0 CC Compactors</b>	
8.1 CC4K .....	18
8.2 CC8K .....	20
8.3 CC14K .....	22
8.4 CC20K .....	24
8.5 CC22K .....	27
<b>9.0 Decal Placement</b>	
9.1 Compactor Decal Placement .....	29

Contact your Connect Work Tools Representative or the Connect Work Tools Parts Department for replacement manuals.  
Inquiries regarding the content of this manual must include the release date shown below

**Information in this manual is subject to change without advance notice**

## List of Figures



### Operator's Manual Figures

#### **Safety Information**

Fig SI.1 Safety Signal Words .....	103
Fig SI.2 Safety Message .....	103
Fig L1-L4 Labels .....	104
Fig L5 Decal Placement .....	105
Fig.SI.3 Meaning of Pictograms .....	106

#### **1.0 Specifications**

Fig.1.2 Compactor Specifications .....	2
--	---

#### **2.0 Installation and Operating Instructions**

Fig.2.1 Operation Instructions .....	3
Fig.2.2 Mounting on the Excavator .....	4
Fig.2.4 Hose Adapters .....	7

#### **3.0 Safety Precautions**

Fig.3.1a-3.1b Safety Precautions .....	9
Fig.3.1c Safety Precautions .....	10

#### **4.0 Inspection and Maintenance**

Fig.4.3 Inspection and Maintenance .....	11
--	----

#### **5.0 Hydraulic Circuit**

Fig.5.1 Hydraulic Circuit .....	13
---------------------------------	----

### Parts Manual Section

#### **7.0 Equipment Identification**

7.1a-7.1b Equipment Identification .....	17
--	----

#### **8.0 CC Compactors**

8.1 CC4K .....	18
8.2 CC8K .....	20
8.3 CC14K .....	22
8.4 CC20K .....	24
8.5 CC22K .....	27

#### **9.0 Decal Placement**

9.1 Compactor Decal Placement .....	29
-------------------------------------	----

Contact your Connect Work Tools Representative or the Connect Work Tools Parts Department for replacement manuals.  
Inquiries regarding the content of this manual must include the release date shown below

**Information in this manual is subject to change without advance notice**

# General Information

## 1. Introduction



### Preface

This manual will provide an understanding of the Connect Work Tools Compactor by providing instructions for safe and effective operation and instructions for regular maintenance activities of the compactor in addition to parts information.

Before installation or operation of the compactor for the first time, please read and understand this manual.

The specifications and designs presented in this manual are subject to change without prior notice.

## 2. Safety Precautions

### Operation

- Operate the compactor for its intended purpose only.
- Operate the compactor only when the operator is seated in the cabin with full control of the machine.
- No bystanders are allowed in the vicinity of the compactor when it is operating. Debris can cause serious injury to bystanders.
- Stay clear of the compactor when it is operating.
- Before operating the compactor, read and follow the safety decals located on equipment.
- Be sure that all decals are clearly visible. Clean and replace as necessary.

### Protective Equipment

- Always wear the following personal protective equipment: safety glasses, ear protection, protective gloves and protective shoes.



### Heat Caution



- Never touch the hot parts and wait for them to cool down first if you have to touch them.
- Hot hydraulic oil can cause burns. Never use your fingers to check for hydraulic fluid leaks and always keep your face away from a possible leak.

# 1.0 Specification

## 1.1 Compactor Specifications

CC Series Compactors						
Specifications	Units	CC4K	CC8K	CC14K	CC20K	CC22K
Operating Weight	kg/lbs	166/366	299/660	624/1,375	903/1,990	1,045/2,304
Vibrator Force	kg/lbs	1,600/3,527	3,350/7,385	6,300/13,889	7,000/15,421	10,000/22,046
Impact Frequency	bpm	2,100				
Oil Flow	lpm/gpm	42-80 lpm 11-22 gal	78-125 lpm 21-33 gal	100-230 lpm 26-61 gal	117-247 lpm 31-65 gal	147-277 lpm 39-73 gal
Pressure (Max)	bar/psi	140/2,030				
A	mm/in	700/27.56	850/33.46	960/37.80	1,050/41.34	1,253/49.33
B	mm/in	410/16.14	610/24.02	740/29.13	800/31.50	860/33.86
C	mm/in	506/19.92	564/22.20	692/27.24	687/27.04	803/31.61
Carrier Weight	metric ton	3-7 mt	5-15 mt	12-25 mt	18-25 mt	20-45 mt

\* The above technical specification can be changed without prior notice.

## 1.2 Compactor Layout

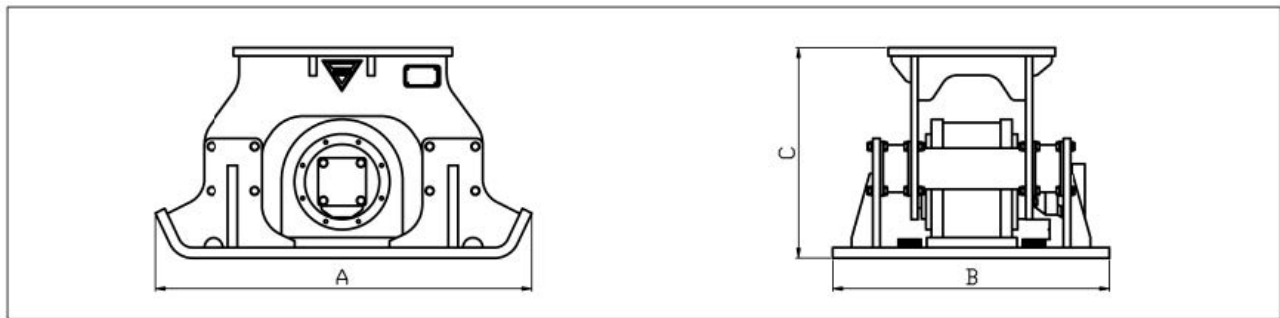


Fig. 1.2 Compactor Specifications

## 1.3. Characteristics

1. Well-designed and robust structure
2. Excellent durability by use of high-tensile steel
3. Excellent compacting
4. High performance
5. Easy mounting and dismounting

## 2.0 Installation and Operating Instructions

### 2.1 Operation Instructions

Water and air are pressed out of the material to be compacted during the compaction action. The degree to which a material can be compacted mainly depends on the following characteristics:

- Form and size: e.g. grit of a uniform size cannot be compacted like hard core of different shapes and sizes
  - Water content
  - Depth of the layer to be compacted: the compaction result can be increased if the layer height is less
- 
- Place the hydraulic compactor on the ground
  - Make sure that the entire tamper plate makes contact with the ground
  - Switch on the hydraulic compactor
  - Exert slight pressure on the hydraulic compactor and move it slowly along a straight line

**Note: The ground/soil is compacted by the frequency of the tamper plate. Exerting excessive pressure with the carrier does not improve the working result.**

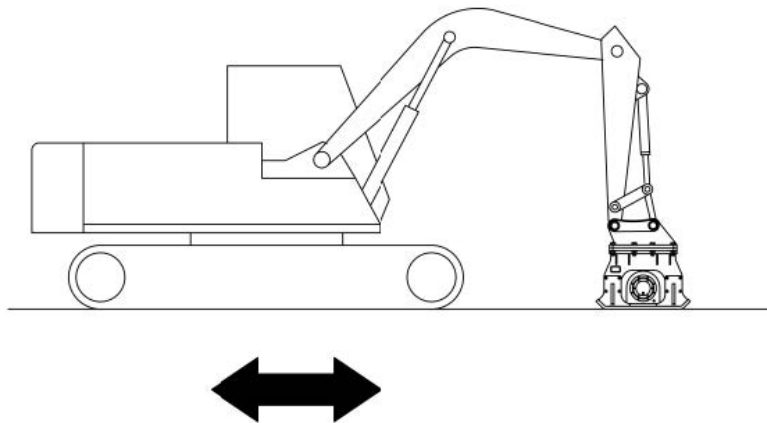


Fig. 2.1 Operation Instructions

- Switch off the hydraulic compactor, lift it and put it back on the ground elsewhere to compact the next section
- Try the compactor on a short test distance to determine the suitable layer depth and to find out how long the hydraulic compactor has to work on any single point to achieve the compaction required
- If necessary, re-compact a section that you have already worked on

## 2.0 Installation and Operating Instructions

### 2.2 Mounting Plate Pattern and Dimensions

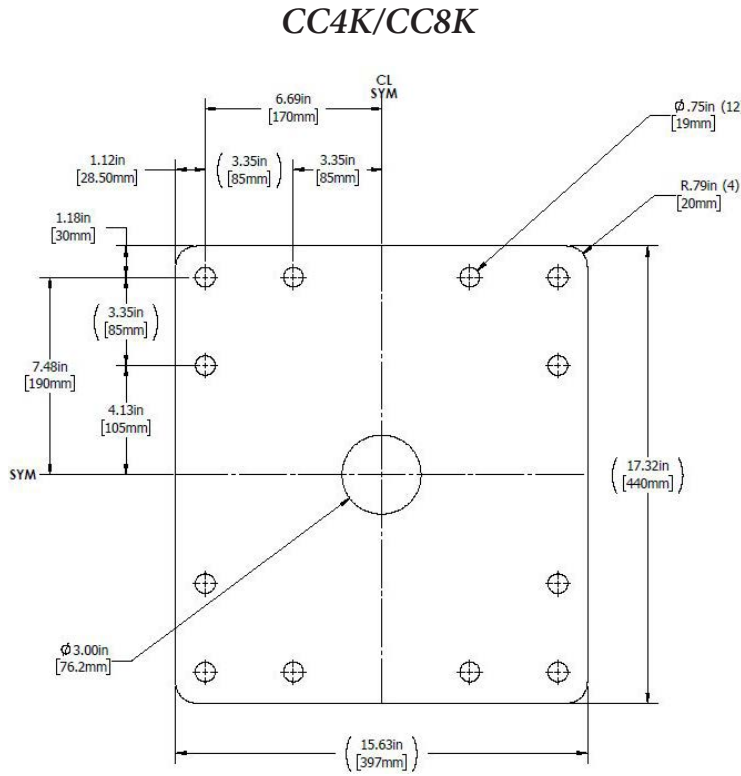


Fig. 2.2 Mounting on the excavator





## ***2.0 Installation and Operating Instructions***

### ***2.3 Mounting and Dismounting***

#### **2.3.1 Mounting on the excavator**

1. Remove bucket pins and disassemble bucket from the excavator. Attach the compactor  
(check the top plate specification in the following table to ensure the top bracket dimensions are correct)
2. Connect hydraulic hoses
3. Open the stop valves completely
4. Run the machine for a while before real operation until the oil temperature reaches 122°F(50°C)-176°F(80°C)
5. Check if the machine is working normally without loading and check for oil leakage

#### **2.3.2 Dismounting from the excavator**

1. Close the stop valve and remove hoses
2. Plug hoses and valves to prevent dust and dirt from entering. This can cause serious problems in the hydraulic system

## 2.0 Installation and Operating Instructions

### 2.4 Hoses

The specification of hoses and adapters are listed below. Hoses should be long enough so that they can move freely.

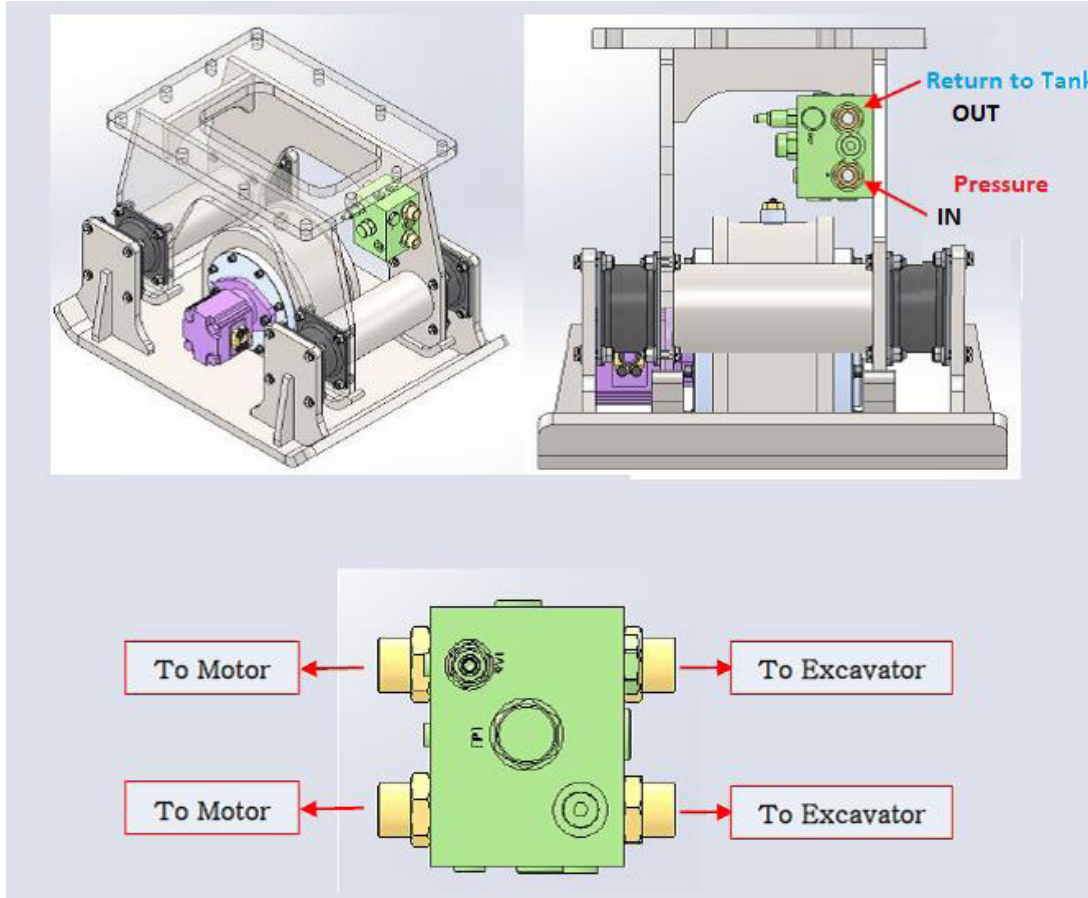


Fig. 2.4 Hose Adapters

CC Series Compactor Adapters Inlet/Outlet Carrier/Valve			
Model	Inlet	Outlet	ORING
CC4K	CCAPO12MJC12M	CCAPO12MJC12M	CGA0807600
CC8K			
CC14K	CCAPO16MJC16M	CCAPO16MJC16M	CFA2007140
CC20K			
CC22K			

## 2.0 Installation and Operating Instructions

### 2.4 Hoses - continued

CC Series Compactor Inlet/Outlet Hoses						
Model	Part Number	Length	Female Fitting	Fitting Spec	Type	Qty
CC4K	40-02168	72 Inches	JIC	3/4 (-12)	SAE 100R12	2
CC8K	40-02170	84 Inches	JIC			
CC14K	40-02171	96 Inches	JIC	1 (-16)		
CC20K	40-02171		JIC			
CC22K	40-02171		JIC			

CC Series Compactor Inlet/Outlet Quick Disconnects				
Model	Male Part Number	Female Part Number	Fitting Spec	Qty
CC4K	CHE00193	CHE00192	3/4 (-12)	1 Each
CC8K				
CC14K	CHE00197	CHE00196	1 (-16)	
CC20K				
CC22K				



Before connection of hoses, remove any foreign particles on the hoses and connection. Otherwise serious damage can be caused. When disassembling, plug the ports. Be careful to protect hands during mounting the machine.

## 3.0 Safety Precautions

### Safety Precautions



Do perform inspection or maintenance work when the engine of the carrier vehicle is running. Two qualified personnel are required to perform inspections. One to operate the vehicle, and the other person to check the operation of the Compactor. During this inspection, do not touch the Compactor or allow any part of the body or clothing come into contact with it.

### 3.1 Cautions

- a) Do not lift or pull any object with the Compactor

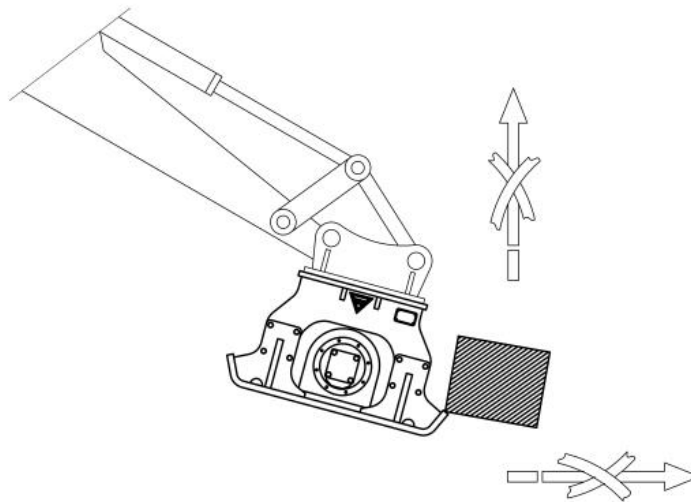


Fig. 3.1a Safety Precautions

- b) Do not use the compactor to pivot or turn the carrier vehicle

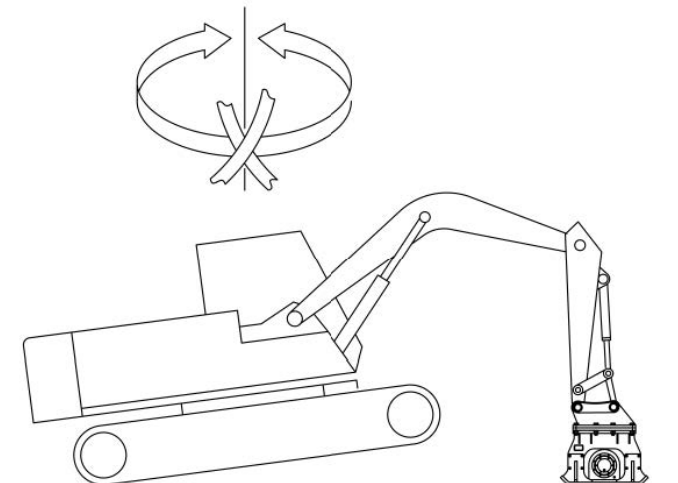


Fig. 3.1b Safety Precautions

## 3.0 Safety Precautions

### Safety Precautions

- c) Do not use the compactor to crush objects, this could cause damage to the equipment

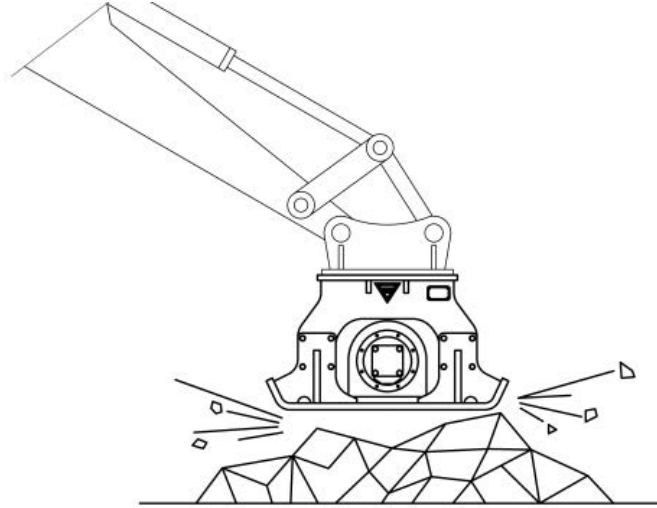


Fig. 3.1c Safety Precautions

### 3.2 Operation

- a) Be aware of any object which could be dangerous during operation
- b) Other attachments' (Breaker) oil flow is different with the compactor. Therefore, before operation, check the oil flow and if necessary, adjust the flow control valve
- c) Open the stop valve on the excavator's arm
- d) Run the compactor before operation until the oil temperature reaches 50°C~80°C
- e) During the compaction operation, do not apply too much down pressure with the boom. If the compactor has too much down pressure, rubber mountings could be damaged



## 4.0 Inspection and Maintenance

### 4.1 Pre-inspection

- Do not perform any inspection or maintenance when the engine of the carrier vehicle is running
- Perform inspection or maintenance after placing compactor on the ground
- Stop the engine of the excavator and close the stop valve

### 4.2 Disassembling

- After closing the stop valve, remove hoses from compactor and plug the piping ports
- Remove the air breather (A) and the plug (B, C) and rest the housing on its side, so that the oil runs out
- Remove the bolts at rubber mountings in order to remove upper frame
- After disassembling rubber mountings, disassemble upper frame and lower frame
- Remove motor from the cover on the shaft and disassemble the bearing from it
- Cover the bearing in protective wrapping after cleaning with an anti-rust oil
- Remove cam assembly and disassemble opposite side cover from shaft

### 4.3 Assembling

- After cleaning parts, assemble those parts opposite from the above (except "4-2 b)" process)
- After assembling, fit the plug (C) back in the housing
- Fill with new oil via hole (A) until it overflows out of the hole (B)
- Fit the air breather (A) and the plug (B) back in the housing



*If it is necessary to change any damaged parts, replace them only with original Connect Work Tools genuine spares. When installing bolts, first check and clean them. Coat the threaded area with Loctite NO.271 and tighten them according to the Bolt Torque Table.*

Required Oil Quantity	
Model	Quantity (Liter)
CC4K	0.51
CC8K	0.87
CC14K	1.74
CC20K	2.09
CC22K	2.36

\* Oil specifications (for bath) : ISO VG 32 (B)

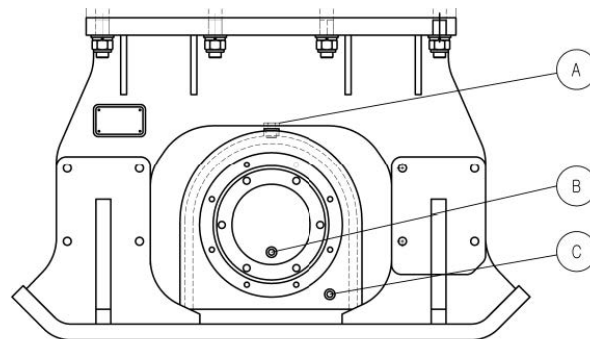


Fig. 4.3 Inspection & Maintenance

### Type of Bearing Lubrication

*All Connect Work Tools compactors are factory filled with ISO VG32 hydraulic oil. The use of other oils such as SAE 10W is acceptable only if the minimum viscosity is at least 12 cSt at an operating temperature of 150° F (66°C).*

## 4.0 Inspection and Maintenance

### 4.3 Assembling - continued

\* Bolt Tightening Torque

<b>Metric Fasteners</b>							
<b>Fastener Property Class</b>		<b>10.9</b>	<b>12.9</b>	<b>10.9</b>	<b>12.9</b>	<b>10.9</b>	<b>12.9</b>
<b>Thread Treatment</b>		<b>Dry</b>		<b>Loctite 242 or 271</b>		<b>Anti-Seize</b>	
<b>Basic Major Dia. (mm)</b>	<b>Thread Pitch (mm/thread)</b>	<b>Torque (Ft*Lbf)</b>		<b>Torque (Ft*Lbf)</b>		<b>Torque (Ft*Lbf)</b>	
<b>10</b>	<b>1.5</b>	<b>53</b>	<b>62</b>	<b>61</b>	<b>72</b>	<b>40</b>	<b>47</b>
<b>12</b>	<b>1.75</b>	<b>93</b>	<b>109</b>	<b>107</b>	<b>125</b>	<b>70</b>	<b>81</b>
<b>14</b>	<b>2</b>	<b>148</b>	<b>173</b>	<b>170</b>	<b>199</b>	<b>111</b>	<b>130</b>
<b>16</b>	<b>2</b>	<b>231</b>	<b>270</b>	<b>265</b>	<b>310</b>	<b>173</b>	<b>202</b>
<b>20</b>	<b>2.5</b>	<b>450</b>	<b>526</b>	<b>517</b>	<b>605</b>	<b>337</b>	<b>394</b>
<b>22</b>	<b>2.5</b>	<b>612</b>	<b>715</b>	<b>704</b>	<b>823</b>	<b>459</b>	<b>537</b>
<b>24</b>	<b>3</b>	<b>778</b>	<b>909</b>	<b>895</b>	<b>1,046</b>	<b>583</b>	<b>682</b>
<b>27</b>	<b>3</b>	<b>1,138</b>	<b>1,330</b>	<b>1,309</b>	<b>1,530</b>	<b>854</b>	<b>998</b>
<b>30</b>	<b>3.5</b>	<b>1,546</b>	<b>1,806</b>	<b>1,777</b>	<b>2,077</b>	<b>1,159</b>	<b>1,355</b>

### 4.4 Normal Inspection

- Before operating the Compactor, read the contents and safety information contained in this manual
- Check for oil leakage in the hydraulic lines and change any damaged or faulty parts
- Check the condition of mounting bracket and pins
- Check the structure for cracks. If welding is necessary, please check with the manufacturer before starting
- Before operation, check the oil levels in the housing

### 4.5 Maintenance Schedule

<b>Maintenance Schedule</b>	
<b>Daily</b>	<b>Check the hydraulic lines for leaks</b>
	<b>Tighten the screw connection to the adapter plate</b>
	<b>Check the connection to the carrier (bolts, lock pins)</b>
	<b>Check the rubber isolators for cracks</b>
<b>Weekly</b>	<b>Check the screw connections and tighten as required</b>
	<b>Check the oil quantity in the housing</b>
	<b>Check the housings and the adapter plate for cracks</b>
<b>If necessary</b>	<b>Cleaning</b>
	<b>Replace damaged hoses</b>
	<b>Check the adapter plate bolts for wear</b>
<b>Once a year</b>	<b>Change the oil in the housing</b>

## 5.0 Hydraulic Circuit

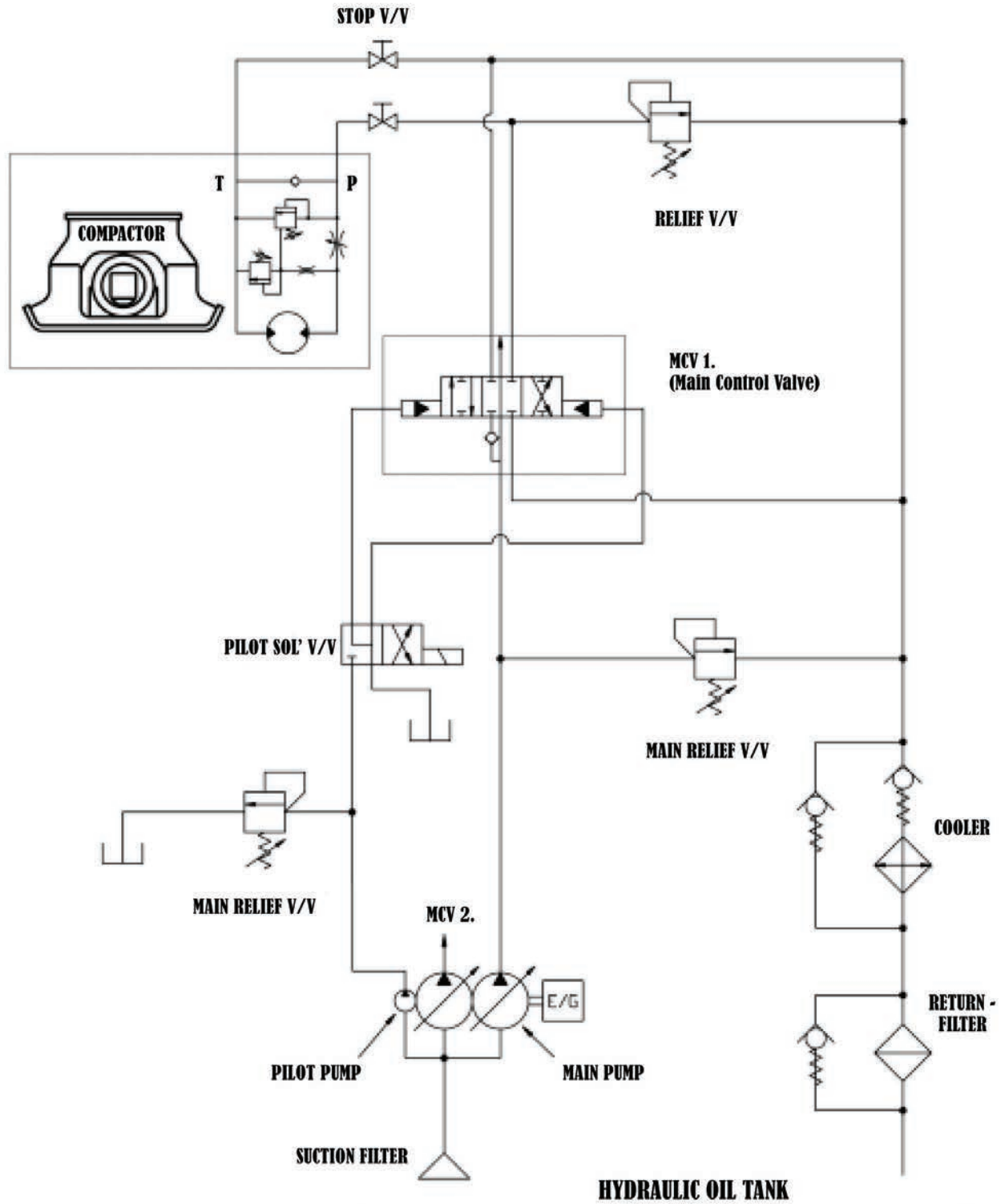


Fig. 5.1 Hydraulic Circuit

## 6.0 Troubleshooting

Problem	Possible Cause	Remedy
<b>Compactor does not operate</b>	Incorrect carrier flow and pressure	Ensure your carrier can achieve minimum flow requirements, check carrier hydraulic oil level, check the carrier hydraulic system flow and pressure
	Broken shaft or damaged splines	Replace the motor
	Eccentric bearing failure	Check bearings for damage/replace bearings
<b>Excessive noise and vibration during operation</b>	Loose bolts or hardware	Check all fasteners and hardware daily, replace missing and damaged torque to specification
	Damaged or failed shock mount	Check mounts for damage, separation, loose mounting hardware. Replace mounts, missing or broken hardware and torque to specification
	Bearing failure	Check bearings for damage/replace bearings
<b>Erratic operation</b>	Incorrect carrier flow and pressure	Ensure your carrier can achieve minimum flow requirements, check carrier hydraulic oil level, check the carrier hydraulic system flow and pressure
	Damaged or failed shock mount	Check mounts for damage, separation, loose mounting hardware. Replace mounts, missing or broken hardware and torque to specification
<b>Operation stalls under load</b>	Eccentric bearing failure	Check bearings for damage/replace bearings
	Worn motor or worn motor seals	Run flow check on motor, replace Motor
<b>Operation smooth but at reduced speed</b>	Incorrect oil flow, too low	Check carrier flow output
		Check the flow control valve
<b>Operating slow - oil leaking from breather</b>	Incorrect oil level in eccentric housing	Check the oil level, drain off excessive oil. Refill the housing to the correct oil level
	Failed motor shaft seals transferring oil and filling the eccentric housing	Drain oil from the housing, repair the motor or replace the motor. Refill the housing



# CC Series Compactors

## Models

CC4K

CC8K

CC14K

CC20K

CC22K

**Parts Manual** CC-Series

*Connect Work Tools - [www.connectworktools.com](http://www.connectworktools.com) - 920.238.6657*





## 7.0 Equipment Identification

### 7.1 Location of the Serial Number Decal

#### Serial Number Location

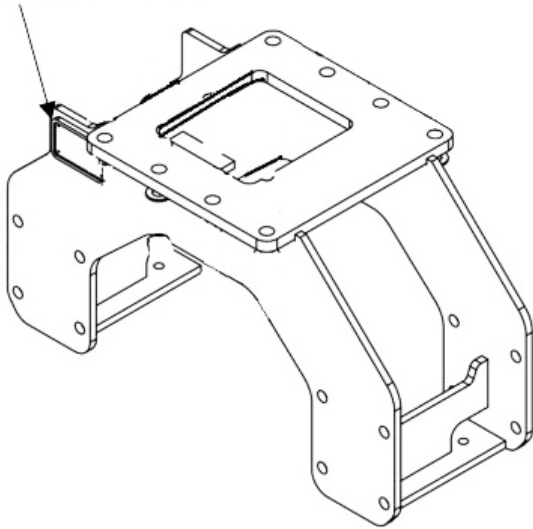


Fig. 7.1a Serial Decal Placement

The Serial Equipment Identification Decal is affixed to the side of the compactor. It provides the following information:

- Serial Number
- Model
- Weight
- Operating Pressure
- Oil Flow
- Carrier Relief Pressure
- Return Line Pressure

**\*\*Note: Prior to ordering parts, it's important to confirm your model and serial number**



Fig. 7.1b Serial Tag

### 7.2 Owner's Record of the Equipment

Record the Model and Serial Number from the Serial Equipment Identification Tag to the space provided below. Indicate the date in which the Connect Work Tools equipment was placed into service.

Model CC300V: CC4K

Model CC700V: CC8K

Model CC1500V: CC14K

Model CC2000V: CC20K

Model CC3000V: CC22K

Serial Number: \_\_\_\_\_

In Service Date: \_\_\_\_\_

Your Connect Work Tools representative requires this information to better assist you with questions regarding parts, warranty, operation, maintenance, or repair.

Your equipment must be registered by your local Distributor at the time of sale.

Product Registration Date: \_\_\_\_\_

## 8.0 CC Compactors

### 8.1 CC4K Compactor

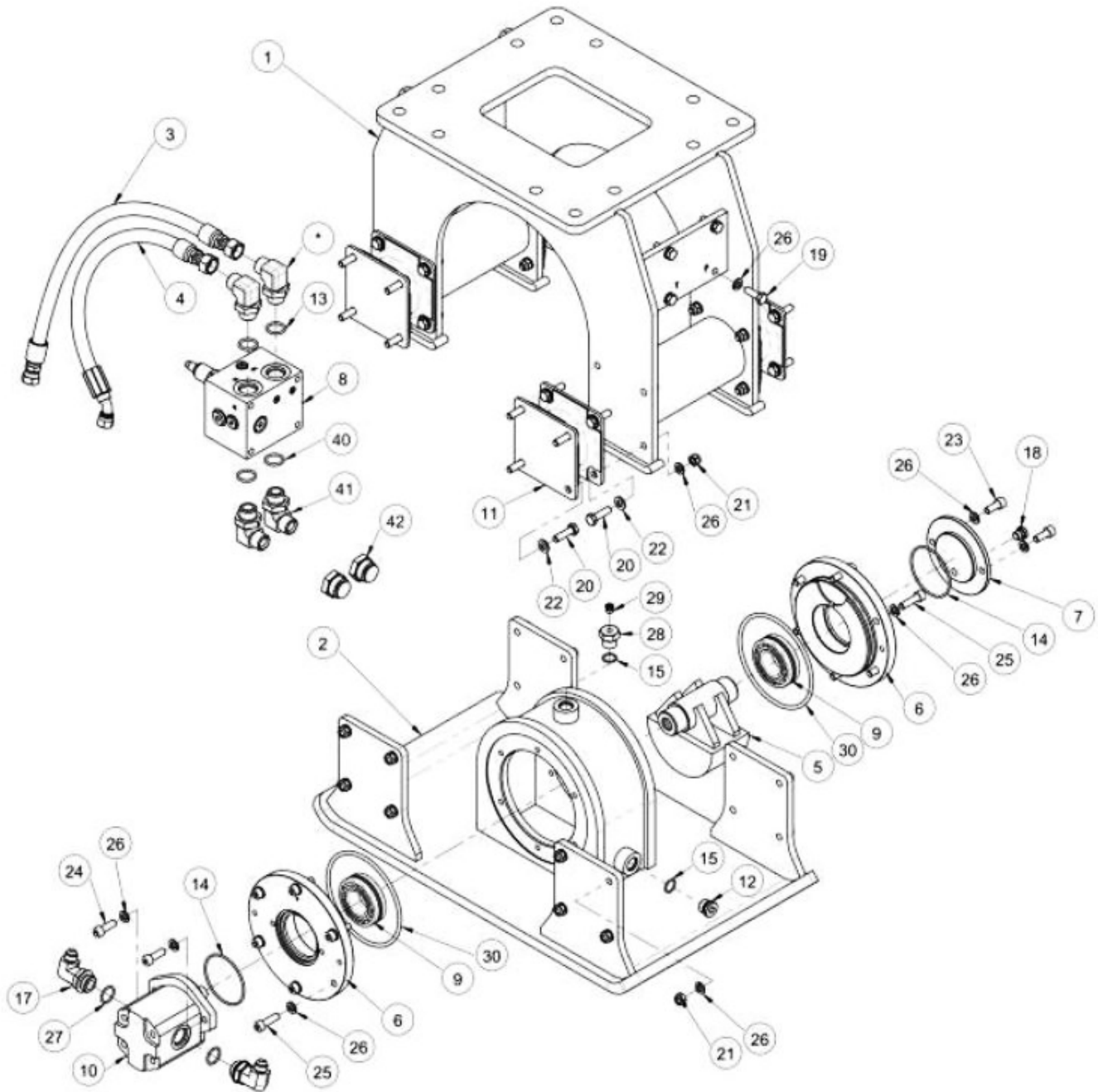


Fig. 8.1 CC4K Compactor

## 8.0 CC Compactors

### 8.1 CC4K Compactor

NO	PART NO.	PART NAME	QTY	ALTERNATE P/N
	<b>CC4K</b>	<b>CC4K</b>		
1	CCV0340212	UPPER FRAME ASSY	1	
2	CCV0342000	LOWER FRAME W.A	1	
3	CCV0340080	HOSE ASSY	1	
4	CCV0340090	HOSE ASSY	1	
5	CCV0340400	FLYWHEEL W.A	1	
6	CCV0340030	COVER	2	
7	CCV0340040	COVER	1	
8	CCV0340302	COMPACTOR VALVE	1	
9	CCV0340060	BEARING	2	
10	CCV03S0083	MOTOR	1	
11	CCV0320700	MTG RUBBER	4	
12	CFA0606180	SOCKET PLUG	1	
13	CGA0807600	O-RING(P24)	2	40-02218
14	CFA2007120	O-RING(G80)	2	
15	CCA2507380	O-RING (P18)	2	
16	CCAPO12MJS08M90	ADAPTER	2	
17	CCAUF12MJC08M90	ADAPTER	2	
18	CHB4006450	SOCKET PLUG	1	
19	CFHB1015030	HEX. BOLT	4	
20	CCHB1015035	HEX. BOLT	32	
21	CCNN101500	NYLON NUT	32	
22	CCPW100000	PLAIN WASHER	32	CHPW100000
23	CHSB1015025	SOCKET BOLT	2	
24	CHSB1015030	SOCKET BOLT	2	
25	CHSB1015035	SOCKET BOLT	12	
26	CHSW100000	SPRING WASHER	52	
27	CCV0330050	O-RING	2	
28	CCV03S0040	HEX HEAD PLUG	1	
29	CCV03S0045	PRESSURE RELIEF VENT	1	
30	CCV03S0110	O-RING	2	
40	CGA0807600	O-RING	2	CGA0807600
41	CCAPO12MJC12M	ADAPTER	2	Option
42	CCCJC12F	CAP	2	Option

## 8.0 CC Compactors

### 8.2 CC8K Compactor

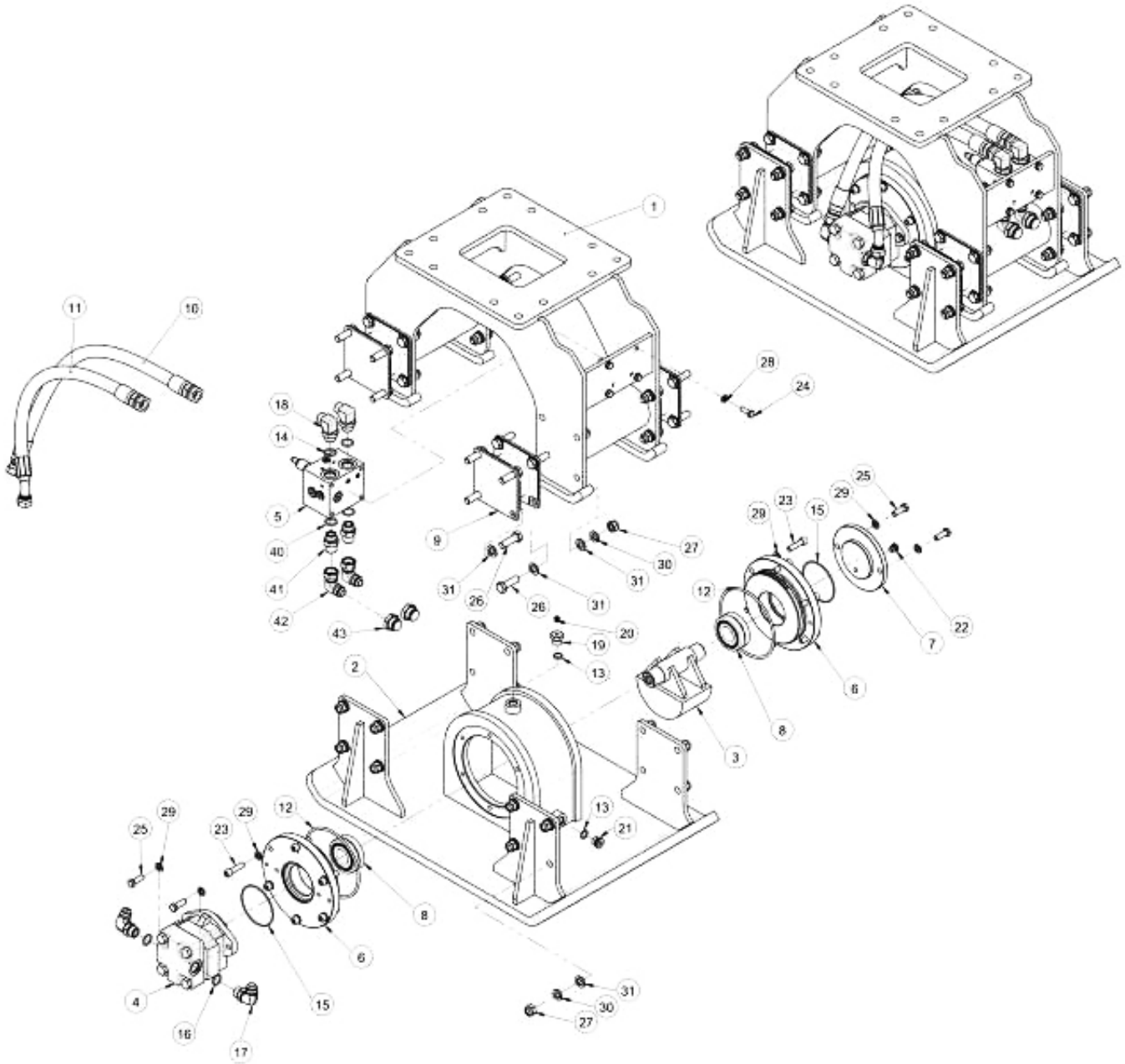


Fig. 8.2 CC8K Compactor

## 8.0 CC Compactors

### 8.2 CC8K Compactor

NO	PART NO.	PART NAME	QTY	ALTERNATE P/N	
	<b>CC8K</b>	<b>CC8K</b>			
1	CCV0761001	UPPER FRAME W.A		1	
2	CCV0742000	LOWER FRAME W.A		1	
3	CCV0740400	FLYWHEEL W.A		1	
4	CCV0740020	MOTOR		1	
5	CCV0740302	COMPACTOR VALVE		1	
6	CCV0740060	COVER		2	
7	CCV0740050	COVER		1	
8	CCV0740010	BEARING		2	
9	CCV0720700	MTG RUBBER		4	
10	CCV0740030	HOSE ASSY		1	
11	CCV0740040	HOSE ASSY		1	
12	CCA1807010	O-RING(G180)		2	
13	CCA2507380	O-RING (P18)		2	
14	CGA0807600	O-RING(P24)		2	
15	CHB2507120	O-RING (G105)		2	
16	CCV0330050	O-RING (AS568B-912)		2	
17	CCAUF12MJC12M90	ADAPTER		2	
18	CCAPO12MJS12M90	ADAPTER		2	
19	CCV03S0040	HEX HEAD PLUG		1	
20	CCV03S0045	PRESSURE RELIEF VENT		1	
21	CFA0606180	SOCKET PLUG		1	
22	CHB4006450	SOCKET PLUG		1	
23	CHSB1217045	SOCKET BOLT		12	
24	CHHB1015030	HEX. BOLT		4	
25	CHHB1217035	HEX. BOLT		4	
26	CHHB1620050	HEX. BOLT		32	
27	CHNN162000	NYLON LOCK NUT		32	
28	CHSW100000	SPRING WASHER		4	
29	CHSW120000	SPRING WASHER		16	
30	CHSW160000	SPRING WASHER		32	
31	CHPW160000	PLAIN WAHSER		64	
40	CGA0807600	O-RING		2	40-02218
41	CCAPO12MJC12M	ADAPTER		2	Option
42	CCAJC12FJC12M	ADAPTER		2	Option
43	CCJC12F	CAP		2	Option

## 8.0 CC Compactors

### 8.3 CC14K Compactor

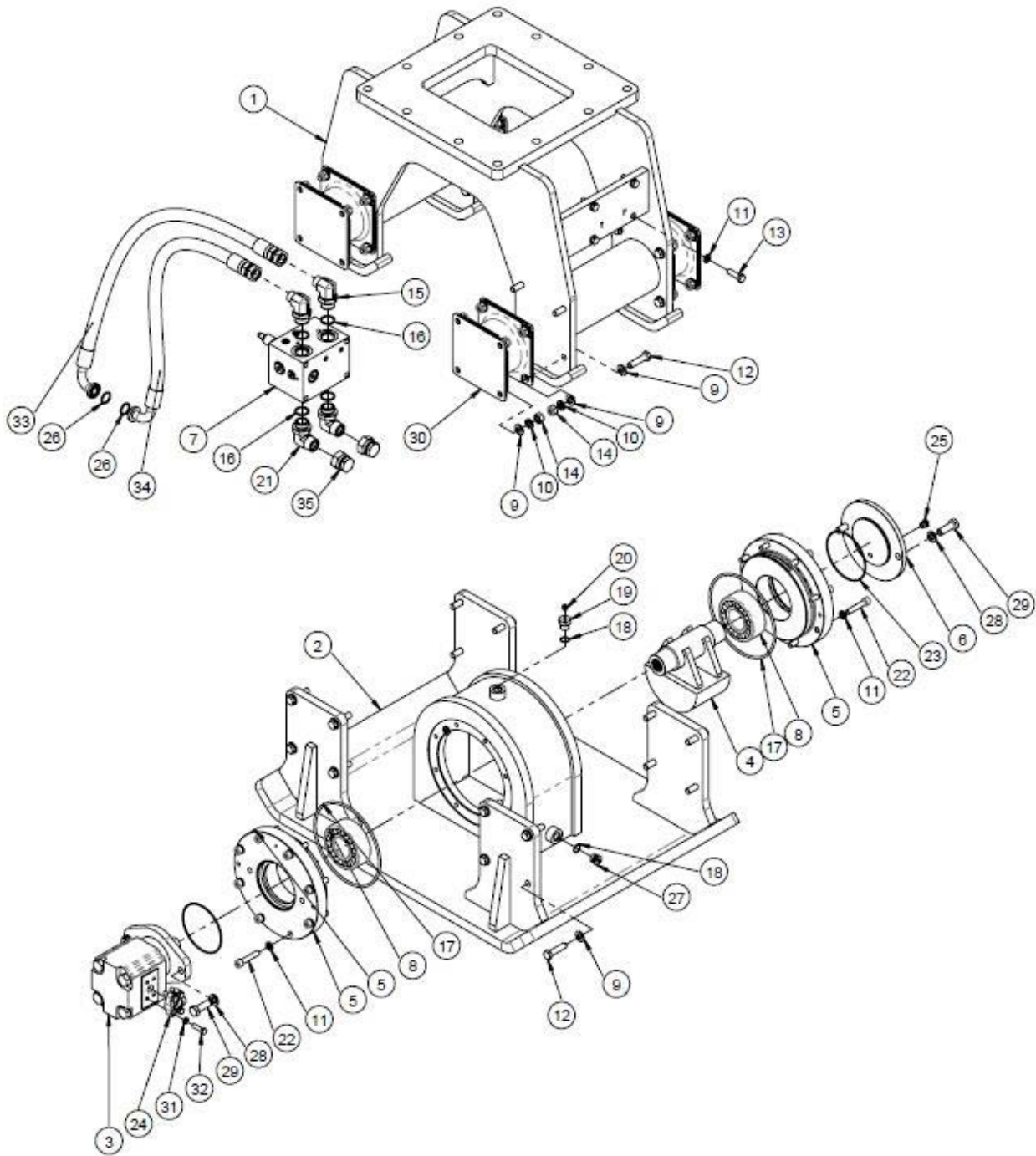


Fig. 8.3 CC14K Compactor



## 8.0 CC Compactors

### 8.3 CC14K Compactor

NO	PART NO.	PART NAME	QTY	ALTERNATE P/N
	<b>CC14K</b>	<b>CC14K</b>		
1	CCV2040210	UPPER FRAME ASSY	1	
2	CCV2042000	LOWER FRAME ASSY	1	
3	CCV2040030	MOTOR	1	
4	CCV2040400	FLYWHEEL W.A	1	
5	CCV2040040	COVER	2	
6	CCV2040060	COVER	1	
7	CCV2040021	COMPACTOR VALVE	1	
8	CCV2040010	BEARING	2	
9	CHPW140000	PLAIN WASHER	64	
10	CHSW140000	SPRING WASHER	32	
11	CHSW120000	SPRING WASHER	20	
12	CHHB1420055	HEX BOLT	32	
13	CHHB1217040	HEX. BOLT	4	
14	CHNN142000	NYLON LOCK NUT	32	
15	CCAPO16MJS12M90	ADAPTER	2	
16	CFA2007140	O-RING	4	
17	CCV2205010	O-RING	2	
18	CCA2507380	O-RING	2	CGA2507380
19	CCV03S0040	PLUG	1	
20	CCV03S0045	PRESSURE RELIEF VENT	1	
21	CWAPO16MJS16M90	ADAPTER	2	
22	CHSB1217060	SOCKET BOLT	16	
23	CFA1207010	O-RING	2	
24	CCSF12F61	SPLIT FLANGE	4	
25	CHB4006450	SOCKET PLUG	1	
26	CCV2040070	O-RING	2	
27	CFA0606180	SOCKET PLUG	1	
28	CHSW160000	SPRING WASHER	4	
29	CHHB1620045	HEX. BOLT	4	
30	CCV2207000	MT'G RUBBER	4	
31	CCF1500038	LOCK WASHER	8	
32	CCF0238125	HEX BOLT	8	
33	CCV2043010	HOSE	1	
34	CCV2043020	HOSE	1	
35	CCCJS16F	UNION CAP	2	

## 8.0 CC Compactors

### 8.4 CC20K Compactor

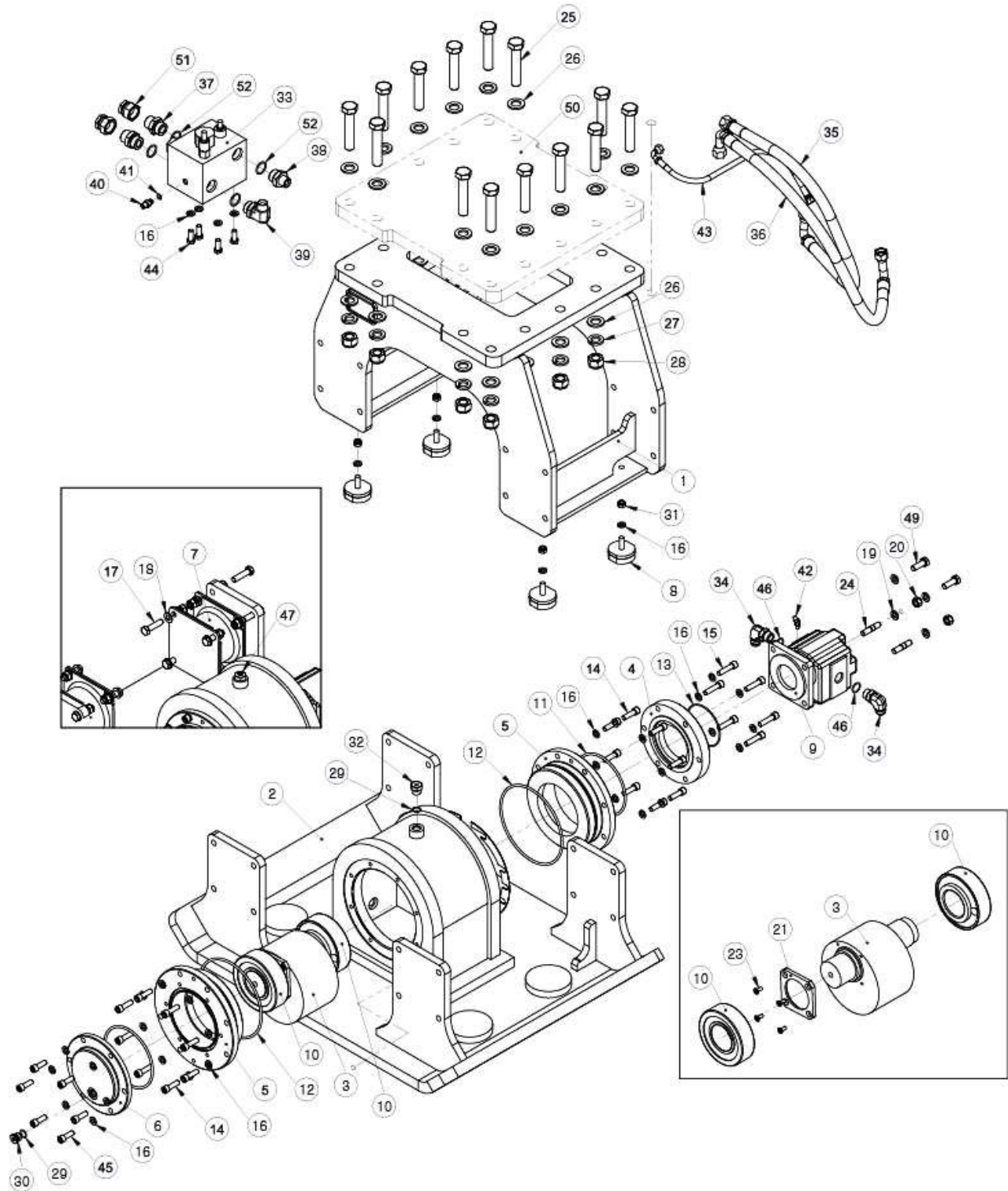


Fig. 8.4 CC20K Compactor

## 8.0 CC Compactors

### 8.4 CC20K Compactor

NO	PART NO.	PART NAME	QTY	ALTERNATE P/N
	<b>CC20K</b>	<b>CC20K</b>		
1	CCV20R1000	UPPER FRAME ASSY	1	
2	CCV2302000	LOWER FRAME ASSY	1	
3	CCV2003000	FFLYWHEEL ASSY	1	
4	CCV2204000	COVER	1	
5	CCV2205000	COVER 1.	2	
6	CCV2206000	COVER	1	
7	CCV2207000	MTG RUBBER	4	
8	CCV2307000	SAFETY RUBBER	4	
9	CCV2008000	MOTOR	1	
10	CCV2009000	BEARING	2	
11	CHB6007090	O-RING	2	
12	CCV2205010	O-RING	2	
13	CFA1007010	O-RING(G115)	1	
14	CHSB1217040	SOCKET BOLT	16	
15	CHSB1217050	SOCKET BOLT	6	
16	CHSW120000	SPRING WASHER	36	
17	CHHB1420055	HEX BOLT	62	
18	CHPW140000	PLAIN WASHER	64	
19	CHSW140000	SPRING WASHER	36	
20	CHNN142000	NYLON LOCK NUT	64	
21	CCV2210000	RING 1	1	
23	CCDB0812020	DISH BOLT	4	
24	CCV3000020	STUD BOLT	2	
25	CHHB2430120	HEX. BOLT	14	
26	CHPW240000	PLAIN WASHER	28	
27	CHSW240000	SPRING WASHER	14	
28	CHNN243000	NYLON LOCK NUT	14	
29	CFA2507380	O-RING (P18)	3	
30	CFA0606180	SOCKET PLUG	2	

## 8.0 CC Compactors

### 8.4 CC20K Compactor

NO	PART NO.	PART NAME	QTY	ALTERNATE P/N
31	CHNN121700	NYLON NUT	4	
32	CCV03S0040	PLUG	1	
33	CCV3016100	COMPACTOR VALVE	1	
34	CCAUF12MJC12M90	ADAPTER	2	
35	CCV2016000	HOSE ASSY	1	
36	CCV2017000	HOSE ASSY	1	
37	CCAPO16MJS16M	ADAPTER	2	
38	CCAPO16MJS12M	ADAPTER	1	
39	CCAPO16MJS12M90	ADAPTER	1	
40	CCAPO04MJS04M	ADAPTER	1	
41	CFA2007150	O-RING	1	
42	APT04MJS04M45	ADAPTER	1	
43	CCHSA06010	HOSE ASSY	1	
44	CHHB1217030	HEX. BOLT	4	
45	CHSB1217035	SOCKET BOLT	6	
46	CCV0330050	O-RING (AS568B-912)	2	
47	CCV03S0045	PRESSURE RELIEFVENT	1	
48	CCV2205005	SHIM PLAE	8	
49	CCHB1420040	HEX BOLT	2	
50	CHB2500020	TOP COVER PLATE	1	
51	CWP3010230	UNION CAP (1",5#)	2	
52	CFA2007140	O-RING (1BP29)	4	

## 8.0 CC Compactors

### 8.5 CC22K Compactor

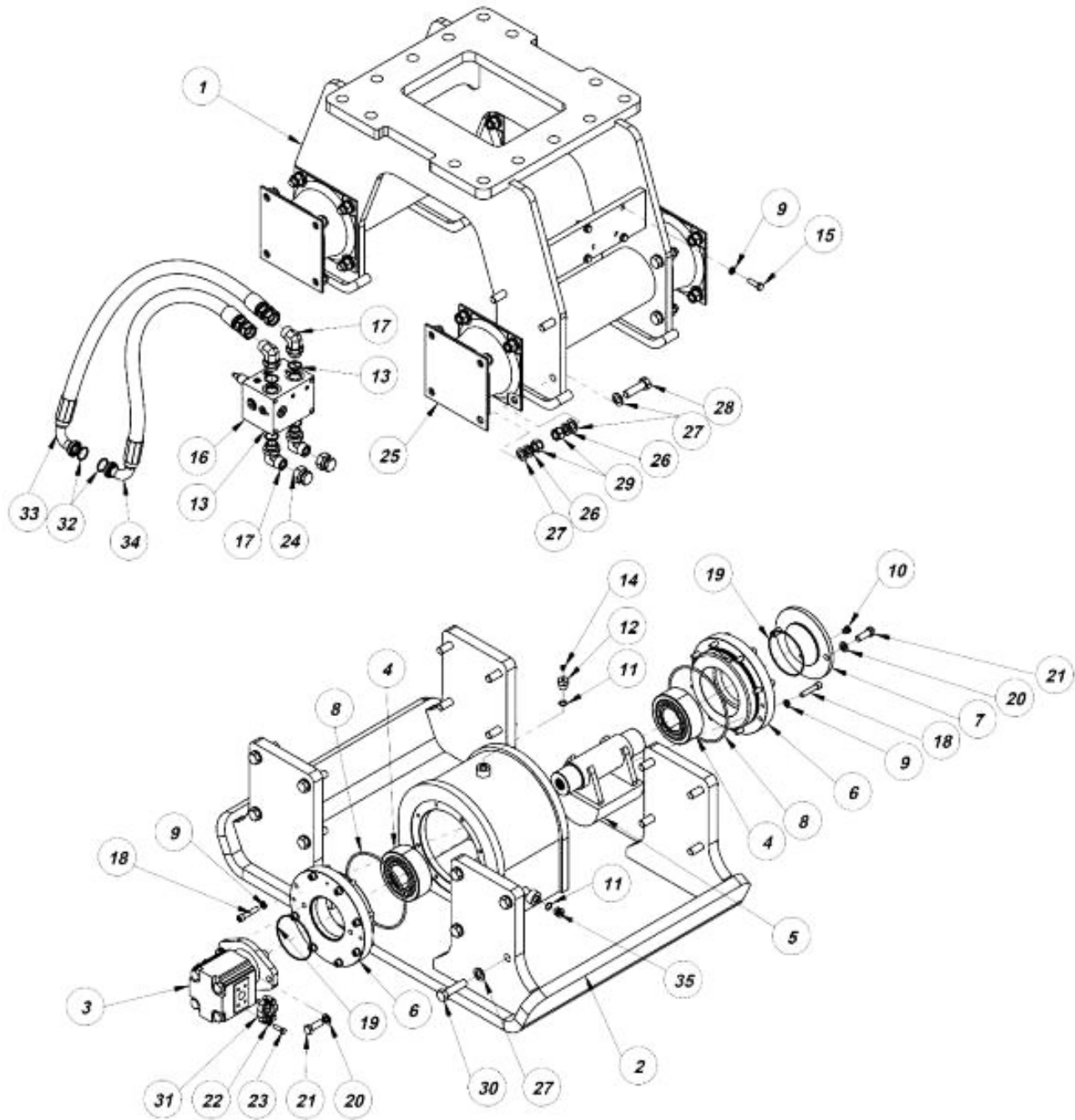


Fig. 8.5 CC22K Compactor

## 8.0 CC Compactors

### 8.5 CC22K Compactor

NO	PART NO.	PART NAME	QTY	ALTERNATE P/N
	<b>CC22K</b>	<b>CC22K</b>		
1	CCV3040210	UPPER FRAME ASSY	1	
2	CCV3042000	LOWER FRAME ASSY	1	
3	CCV3040030	MOTOR	1	
4	CCV3040010	BEARING	2	
5	CCV3040400	FLYWHEEL W.A	1	
6	CCV3040040	COVER	2	
7	CCV2040060	COVER	1	
8	CCV2205010	O-RING	2	
9	CHSW120000	SPRING WASHER	20	
10	CHB4006450	SOCKET PLUG	1	
11	CFA2507380	O-RING	2	
12	CCV03S0040	PLUG	1	
13	CFA0307060	O-RING	4	
14	CCV03S0045	PRESSURE RELIEF VENT	1	
15	CHHB1217040	HEX. BOLT	4	
16	CCV3040021	COMPACTOR VALVE	1	
17	CCAPO16MJS16M90	ADAPTER	4	
18	CHSB1217060	SOCKET BOLT	16	
19	CFA1207010	O-RING	2	
20	CHSW160000	SPRING WASHER	4	
21	CHHB1620045	HEX. BOLT	4	
22	CCF1500038	LOCK WASHER	8	
23	CCF0238125	HEX BOLT	8	
24	CCCJS16F	UNION CAP	2	
25	CCV3004000	MT'G RUBBER	4	
26	CHSW200000	SPRING WASHER	32	
27	CHPW200000	PLAIN WASHER	64	
28	CHHB2025070	HEX. BOLT	16	
29	CHNN202500	NYLON LOCK NUT	32	
30	CHHB2025080	HEX. BOLT	16	
31	CCSF16F61	SPLIT FLANGE	4	
32	CCP3201012	O-RING	2	
33	CCV3043010	HOSE	1	
34	CCV3043020	HOSE	1	
35	CFA0606180	SOCKET PLUG	1	

## 9.0 CC Compactors - Decal Kits

### 9.1 Typical CC Compactor Decal Placement

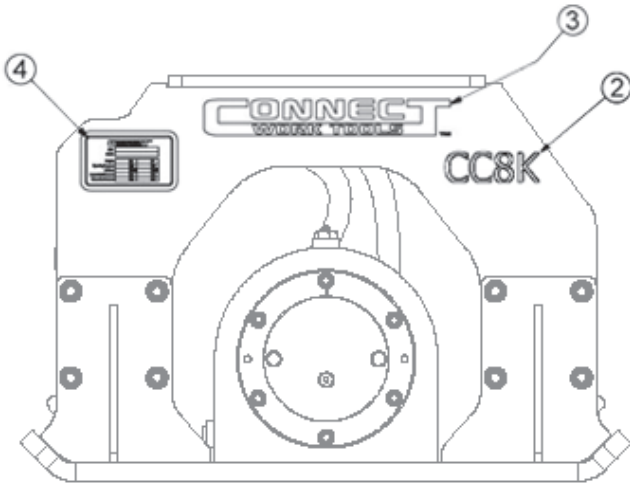


Fig. 9.1 CC Decal Placement

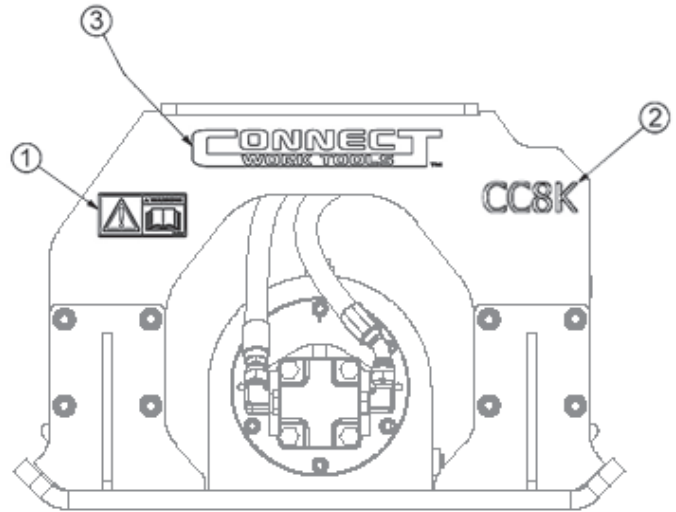


Fig. 9.1 CC Decal Placement



Fig. L-1

1. Part Number 16-00078 - Decal Warning Read Manual



Fig. L-2

2. Part Number CCE00046 - Decal CC4K  
 Part Number CCE00043 - Decal CC8K  
 Part Number CCE00047 - Decal CC14K  
 Part Number CCE00045 - Decal CC20K  
 Part Number CCE00048 - Decal CC22K



Fig. L-3

3. Part Number CHE00166 - Decal Connect Logo (Models CC4K- CC1K)  
 Part Number CHE00392 - Decal Connect Logo (Model CC20K)  
 Part Number CHE00109 - Decal Connect Logo (Model CC22K)



Fig. L-4

4. Part Number CCE00009 - Decal SN Plate (Not included in Decal Kit)









**CONNECT**<sup>TM</sup>  
**WORK TOOLS**

---

---

**920.238.6657**

*[www.connectworktools.com](http://www.connectworktools.com)*

