

CONNECTTM WORK TOOLS

HYDRAULIC ATTACHMENTS FOR CONSTRUCTION AND DEMOLITION



**TOUGH WORK
REQUIRES
TOUGHER
ATTACHMENTS**

CONNECTWORKTOOLS.COM



CONNECTTM WORK TOOLS

Connect Work Tools "CWT" is part of a group of companies operated by Exodus Global (formerly Exodus Machines), a privately held, local family business. With strong ties to Superior, WI, Exodus Global has invested in state-of-the-art equipment and a world class manufacturing facility.

CWT has fought hard to gain market share since our start in December 2015. While the division grew every year, it wasn't making the impact we knew it could.

A decision in 2021 changed everything...

We had a choice; we could stay the course and continue our slow growth trajectory or "go big." We chose the latter!

In May we hired Geordie Stewart as our Director of Sales. In June we opened a new location in Cleburne, TX, added ten new employees and invested millions in inventory. "Going big" proved to be just the catalyst needed to take CWT to the proverbial "next level".

Our trajectory has changed. Our team has changed. Our attitude has changed.

We know earning new customers is hard work. If you have given us a shot; thank you! If you haven't, please know we are committed to providing the best customer service and product support in the market to earn and maintain your business.

I could not be more confident in the future of Connect Work Tools and the other companies owned by Exodus Global; ShearCore, BladeCore, and OilQuick Americas.

Our passion to service this industry runs deep, our commitment to quality and customer service even deeper, yet neither reach the level of appreciation we have for our employees. We could not do what we do without their skill, dedication, work ethic, and talent.

I am humbled and privileged to sit in the chair I do and with that comes a responsibility. My commitment to our customers, vendors and employees is to operate this company with integrity and passion.

Oh, and one more thing, we are going to have fun along the way!

Kevin Boreen, CEO



155 MAIN STREET • SUPERIOR, WI • 54880 • 920-238-6657 • INFO@CONNECTWORKTOOLS.COM





COMMITMENT TO SUPERIOR SERVICE.

The products will speak for themselves, but once you get *Connected*, we want you to Stay *Connected*.

Our commitment to customer service and product support runs deep.
Going above and beyond for our customers is our baseline.
It's not just a product; it's the way we do business.

This commitment led us to the decision in 2021 to open a dedicated Connect Work Tools facility.
This centrally located facility allows us to better serve customers' needs.

Whether it's time for a rebuild or you need a replacement tool shipped overnight,
we have a team of experts ready to get the job done.

In addition to our facility, we have invested in world class field service personnel.
We offer on-site installation support, troubleshooting, as well as
training programs tailored for dealers or end users.

Contact our service team at 817-774-1428 or service@connectworktools.com.

CH SERIES HIGHLIGHTS

1 N² Gas Charged Accumulator

Rechargeable N² gas accumulator assists power stroke and reduces the surge pressure and spikes from the hydraulic circuit of the excavator.

2 Lubrication Systems

All CH Series Breakers offer top down lubrication. Three options are available: Breaker Mounted, Carrier Mounted, and Hydraulic Mounted.

3 Piston

CH Series has the most efficient piston design for maximum energy transfer and recoil reduction as well as ideal match of tool and piston diameters. It transfers the highest shock wave into the breaking objects.

4 Silenced Housing

Housing reduces decibel levels and provides maximum protection to the breaker. Replaceable wear plates protect the power cell and internal housing. (Medium/Large Series)

5 Anti-Blank Fire (ABF) System

ABF increases the lifespan of all components subject to wear and fatigue and reduces stress on the main carrier and breaker. (Available on most Medium/Large Series Breakers - not pictured)

6 Housing Bottom Plate

Abrasion-resistant plate delivers breaker protection.

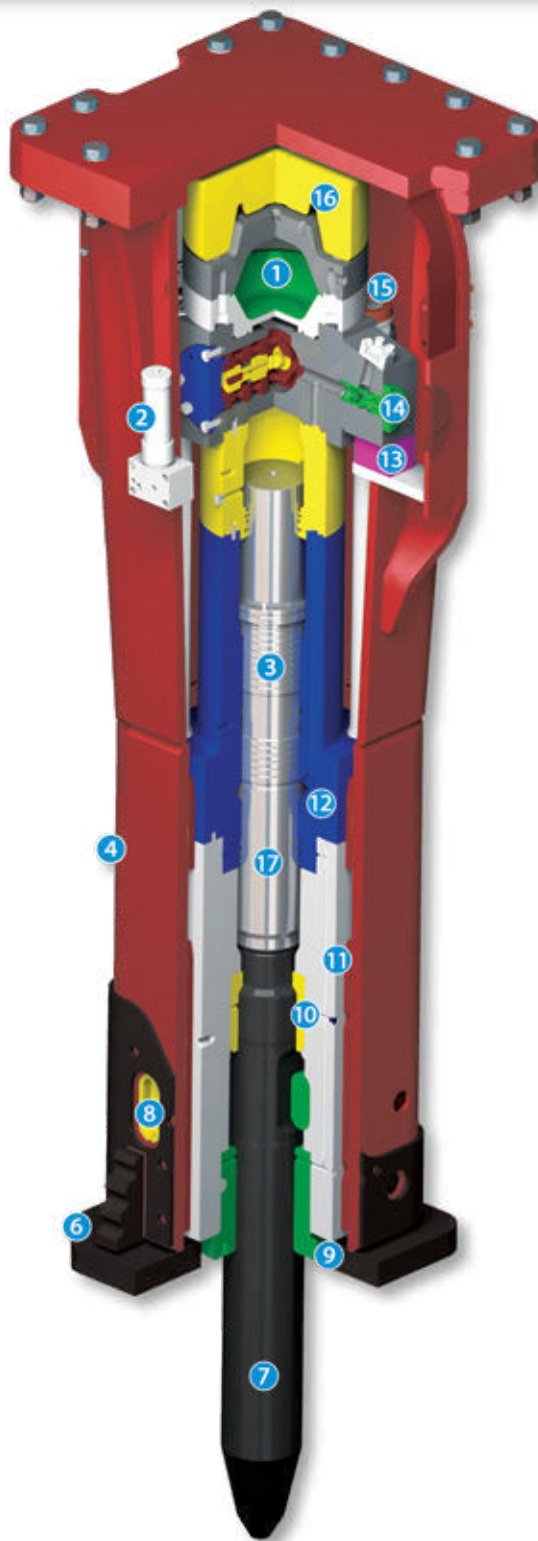
7 Tool Bit

High quality, heat-treated steel is designed to the optimal working length to ensure toughness and long wear.

8 Dual Tool Retainer Pins

Retainer pins promote even wear pattern and correct tool alignment. (Medium/Large Series)

Single Tool Retainer Pin on Small Series.



10 All-in-One Upper Bushing and Thrust Ring Integration

Easier maintenance and serviceability. (Large Series)

11 Wear Plates

Wear resistant plates between cylinder, front head, and housing increase overall product durability.

12 Cylinder Design

Square design ensures that the cylinder fits tight and aligns to the front head. Rounded lower side rod nut pockets improve the side rod durability.

13 Double Side Buffers

Side absorbers protect the power cell and internal housing. They also suspend the power cell within the housing allowing for easy installation and replacement.

14 Oil Flow Control Valve

Control valve regulates the flow of hydraulic oil for maximum performance regardless of flow variations. (Large Series)

Check Valve

Check valve prevents back oil flow and reduces unnecessary spikes from the hydraulic circuit. (Medium Series)

15 Side Tie Rods

Fully enclosed side tie rods increase durability and optimal load carrying capacity.

16 Top Buffer

The top buffer acts as a vibration absorber to prevent impulses between the carrier and the breaker.

17 Efficient Power Transfer (Piston to tool)

The oil flow allows for optimum transfer of blow energy into the material and reduces recoil.

CH SERIES BREAKERS

FEEL THE ENERGY



BREAKER SPECIFICATIONS

CH SERIES SMALL BREAKERS

MODEL	FT. LB. CLASS	WORKING WEIGHT lbs.	CARRIER WEIGHT lbs.	TOOL DIAMETER in.	IMPACT RATE bpm	FLOW RANGE gpm
CH65	500	*EX 630 *SS 660	*EX 7,000 - 15,000 *BH 9,000 - 17,000 *SS 5,000 - 8,000	2.48	500 - 1,000	10 - 13
CH70	750	*EX 685 *SS 948	*EX 7,000 - 16,020 *BH 9,000 - 17,000 *SS 5,000 - 8,000	2.75	500 - 1,200	10 - 24
CH75	1,000	*EX 905 *BH950	*EX 15,000 - 30,000 *BH 12,000 - 25,000 *SS 8,000 - 15,000	2.95	520 - 1,000	15 - 23
CH85	1,400	1,185	15,000 - 30,000	3.35	500 - 900	15 - 23
CH95	1,800	1,465	15,000 - 30,000	3.74	350 - 700	18 - 24
CH100	2,000	1,965	22,000 - 35,200	3.94	350 - 600	18 - 26

*EX - Mini - Excavator *SS - Skid Steer *BH - Backhoe

15 MODELS TO CHOOSE FROM



BREAKER SPECIFICATIONS

CH SERIES MEDIUM & LARGE BREAKERS

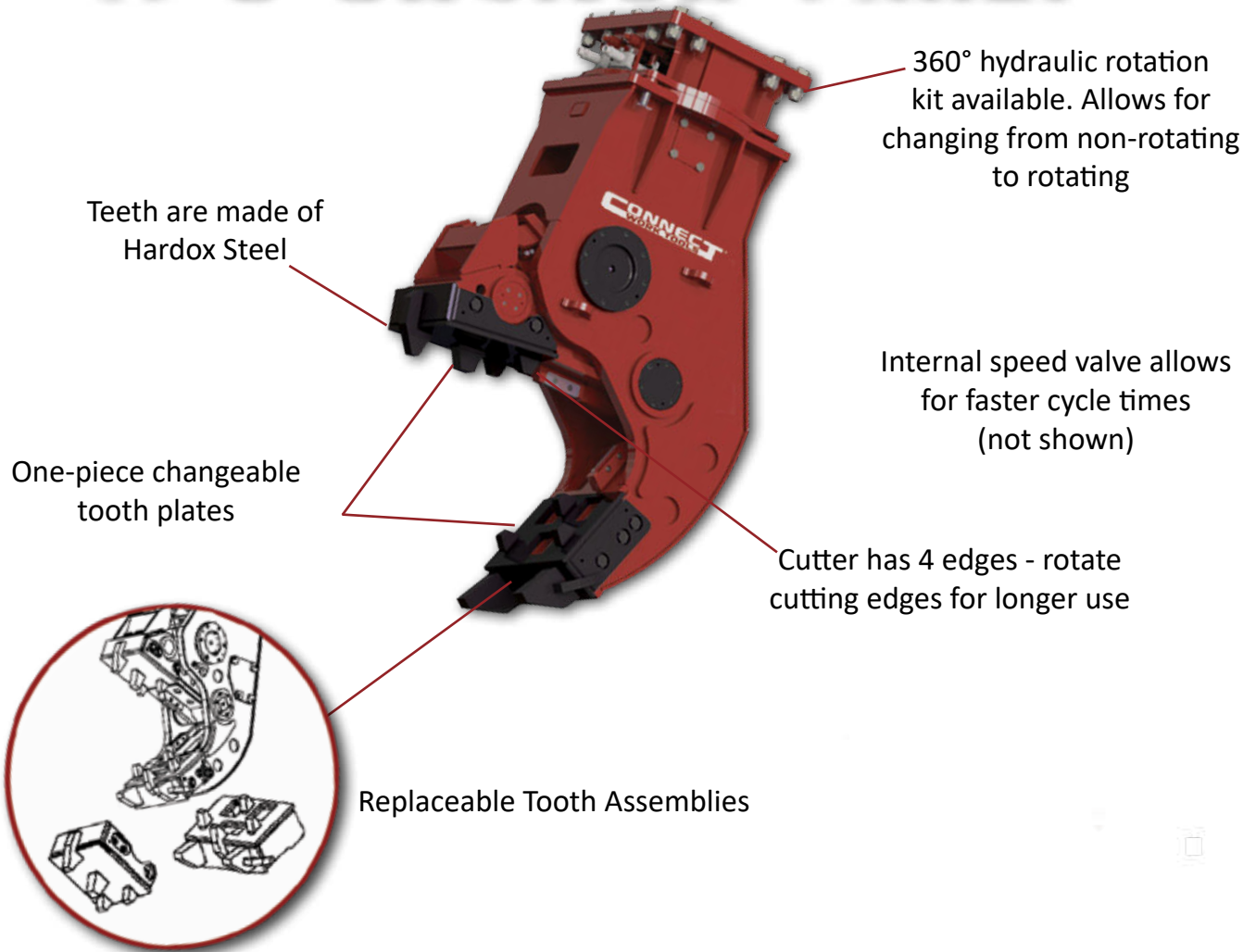
MODEL	FT. LB. CLASS	WORKING WEIGHT lbs.	CARRIER WEIGHT lbs.	TOOL DIAMETER in.	IMPACT RATE bpm	FLOW RANGE gpm
CH110	2,500	2,645	30,900 - 40,000	4.33	400 - 500	24 - 36
CH120	3,000	3,306	40,000 - 55,100	4.72		29 - 39
CH130	4,000	3,823	48,500 - 61,700	5.11		32 - 43
CH140	5,500	4,960	55,000 - 68,300	5.51		44 - 52
CH150	7,500	5,380	61,700 - 72,800	5.91	350 - 450	50 - 65
CH165	10,000	6,504	73,000 - 90,000	6.49		48 - 77
CH175	12,000	8,267	88,000 - 154,000	6.88	300 - 400	53 - 84
CH180	14,000	12,125	110,000 - 190,000	7.08		60 - 90
CH205	16,000	16,535	154,000 - 240,000	8.07		79 - 105

updated 07/26/2023

CWP SERIES PULVERIZERS

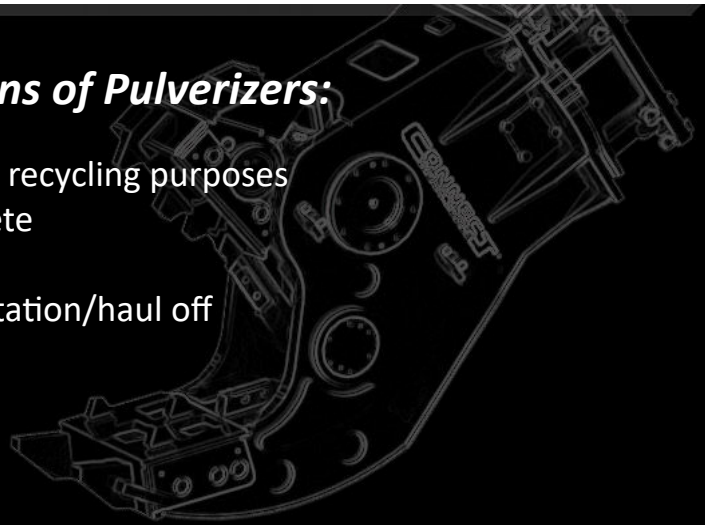
4 MODELS TO CHOOSE FROM

IT'S CRUNCH TIME!



Typical Applications of Pulverizers:

- Clean sorting of concrete from rebar for recycling purposes
- Downsizing material for crushing concrete
- Resizing concrete for job site clean up
- Densifies material to minimize transportation/haul off
- Primary Demolition





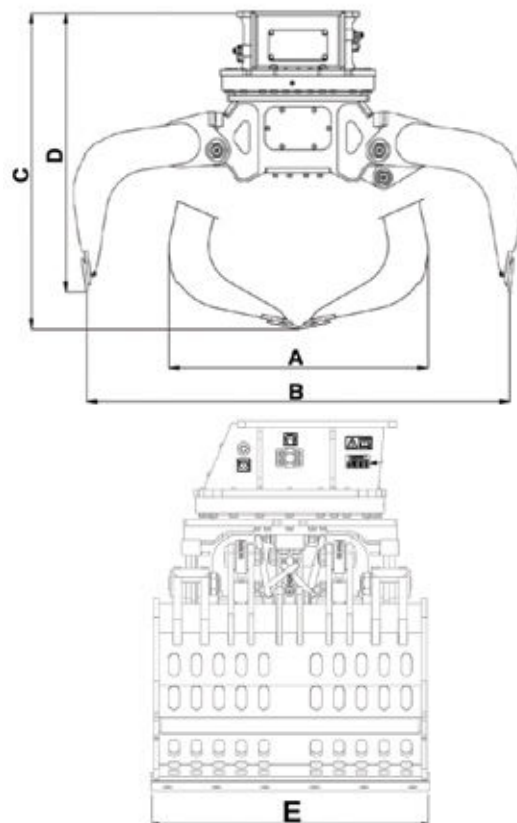
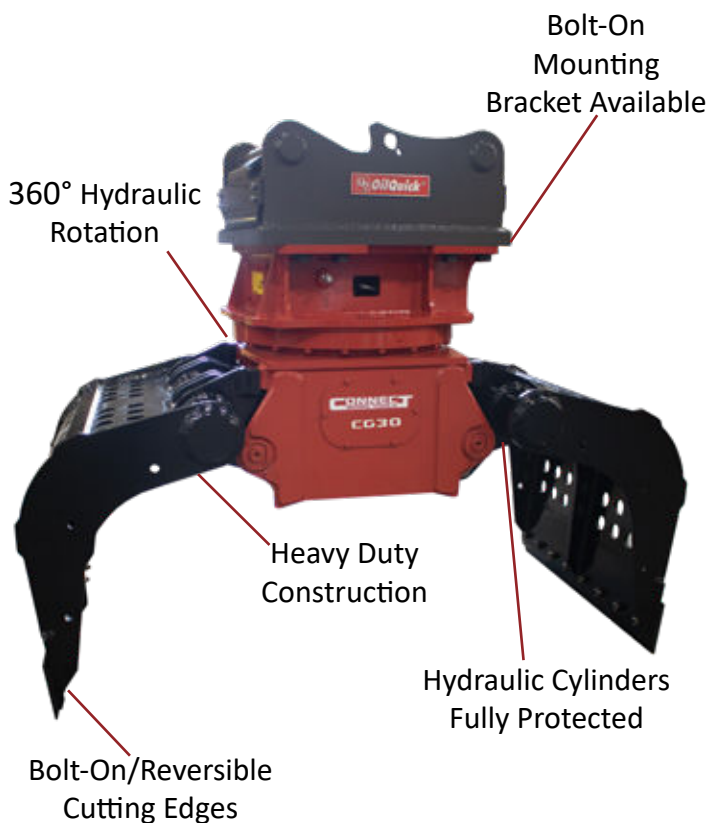
PULVERIZER SPECIFICATIONS

CWP SERIES HYDRAULIC PULVERIZERS					
MODEL	WORKING WEIGHT lbs.	CARRIER WEIGHT lbs.	CRUSHING FORCE lbs.	JAW WIDTH in.	MAX JAW OPENING in.
CWP2000	4,200	40,000 - 70,000	242,500	24	37
CWP2000R	5,300				
CWP3000	6,150	60,000 - 90,000	352,700	27	41
CWP3000R	7,000				

CG SERIES ROTATING GRAPPLER

6 MODELS AVAILABLE

GET CONNECTED. STAY CONNECTED.



Refer to chart for specifications

Typical Applications of Grapples:

- Sorting C & D Debris
- Waste/Recycling
- Storm Clean up
- Select Demolition
- High Reach Demolition
- Landscaping
- Transfer Stations
- Road Maintenance
- Truck/Railroad Cranes

As a manufacturing partner with OilQuick®, all Connect attachments can be fitted with their automatic quick coupler

PPLES



GRAPPLE SPECIFICATIONS

CG SERIES ROTATING GRAPPLES

MODEL	WORKING WEIGHT lbs.	CARRIER WEIGHT lbs.	CAPACITY ft3	OIL FLOW gpm	JAW WIDTH CLOSED (A) in.	MAX JAW OPENING (B) in.	HEIGHT CLOSED (C) in.	HEIGHT OPENED (D) in.	GRAPPLE WIDTH (E) in.
CG 10	1,080	10,000 - 18,000	7.1	16	38	63	40	35	18.8
CG 15	2,340	18,000 - 38,000	14.2	21	42	65	50	44	33.5
CG 22	3,420	38,000 - 60,000	24.7	26	48	78	55	49	41.3
CG 30	4,800	60,000 - 85,000	35.3	40	58	80	58	65	43.9
CG 40	5,200	85,000 - 100,000	40.1	55	62	84	66	58	52.1

CC SERIES COMPACTORS

5 MODELS AVAILABLE

**ANY PROJECT.
BIG OR SMALL.**



Typical Applications of Plate Compactors:

- Compacting soil and asphalt
- Backfilling trenches
- Preparing sites for asphalt or concrete
- Post/Pier driving
- Sea wall installations

Connect Work Tools' CC Compactor Series has integrated flow control valves, along with self aligning bearings with a maintenance free oil lubrication system. The CC series has compatible mounting brackets for the CH Breaker and CG Grapple Series.



COMPACTOR SPECIFICATIONS

CC SERIES COMPACTORS						
MODEL	WORKING WEIGHT lbs.	CARRIER WEIGHT lbs.	COMPACTION PLATE SIZE in.	IMPACT FORCE lbs.	IMPACT FREQUENCY cpm	OIL FLOW gpm
CC4K	550	2,000 - 10,000	16 x 28	3,500	2,100	11
CC8K	850	8,000 - 20,000	24 x 34	6,500		21
CC14K	1,675	12,000 - 34,000	28 x 38	11,000		26
CC20K	2,135	16,000 - 60,000	32 x 46	15,500		31
CC22K	2,930	55,000 - 120,000	36 x 50	20,000		39



WE WILL HAMMER OUT THE REBUILD, SO YOU CAN GET BACK TO WORK!

Connect Work Tools rebuild services are done in our dedicated facility in Cleburne, TX.

Our fully operational rebuild facility includes:

- Cat walk power cell rebuild stand
- Hydraulic power unit for testing completed breaker rebuilds
- Support equipment and facilities
- Parts washer
- Fully equipped machine shop
- Complete inventory of parts, breakers, and pins

Our experienced technicians will evaluate your equipment, determine the root cause of the problem, and provide you with a detailed quote of bringing the life back into your attachment.

In addition, we have an inventory of used and reconditioned attachments that have been taken in on trade - all which have been inspected by our technicians.

Check out our used equipment page at [ConnectWorkTools.com/used](https://connectworktools.com/used)

Our breaker service center rebuilds all major brands of breakers. We believe in honest and upfront communication throughout the rebuild process. With a comprehensive diagnostic form and pictures of damaged components, our process is very transparent, well documented, and stored in our customer database. All repaired breakers are tested and recorded running prior to returning them to you. All rebuilds include a 90-day warranty.

RECONDITIONING AND PARTS DEPARTMENT

NEED PARTS? WE'VE GOT THEM!

At Connect Work Tools, we understand the need to keep your investment up and running.

Our Texas facility is fully stocked with replacement parts available at competitive prices.

We offer same day shipping on most replacement parts.

In addition to standard parts, we offer customization kits for special applications.

- Underwater kits
- Combo brackets
- Solida® tool bits for most major brands
- Specialty tools
- Plating kits
- Rebuild kits





CONNECTWORKTOOLS.COM | 920.238.6657 | INFO@CONNECTWORKTOOLS.COM

TEXAS LOCATION: 115 COMMERCE BLVD., CLEBURNE, TX 76033

WISCONSIN LOCATION: 155 MAIN STREET, SUPERIOR, WI 54880



EXODUS
GLOBAL

CONNECT WORK TOOLS IS PART OF EXODUS GLOBAL, A PRIVATELY-OWNED COMPANY IN SUPERIOR, WI
EXODUS GLOBAL ALSO INCLUDES BLADECORE, SHEARCORE AND OILQUICK AMERICAS.



@connecttools



@connecttools



/connectworktools