

# CH SERIES HYDRAULIC BREAKERS



**CONNECT**™  
**WORK TOOLS**

*Attachments you can depend on.*  
**CONNECTWORKTOOLS.COM**





## CH SERIES ADVANTAGE

**Top-down lubrication:** Automatic lubricators are available for all models.

**Anti-Blank Fire (ABF):** ABF is available on CH100 - CH205 models.

**Slip-fit tool bushings:** CH bushings allow for easy maintenance and are field replaceable. No need to remove the power cell from the housing in order to replace the lower bushing.

**Life-cycle affordability:** CH Series Breakers offer competitive owner and operator costs.

**Steady blow energy:** CH Series Breakers provide maximum breaking power with every blow.

**Boxed housing design:** Available in all models. Boxed-style protects the power cell by fully enclosing the breaker. It also reduces operational noise.

**Three year limited warranty:** Connect Work Tools stands behind the quality of the product it provides.



## CH SERIES FEATURES

### 1 N<sup>2</sup> Gas Charged Accumulator

Rechargeable N<sup>2</sup> gas accumulator assists power stroke and reduces the surge pressure and spikes from the hydraulic circuit of the excavator.

### 2 Lubrication Systems

All CH Series Breakers offer top down lubrication. Three options are available: Breaker Mounted, Carrier Mounted, and Hydraulic Mounted.

### 3 Piston

CH Series has the most efficient piston design for maximum energy transfer and recoil reduction as well as ideal match of tool and piston diameters. It transfers the highest shock wave into the breaking objects.

### 4 Silenced Housing

Housing reduces decibel levels and provides maximum protection to the breaker. Replaceable wear plates protect the power cell and internal housing. (Medium/Large Series)

### 5 Anti-Blank Fire (ABF) System

ABF increases the lifespan of all components subject to wear and fatigue and reduces stress on the main carrier and breaker. (Available on most Medium/Large Series Breakers - not pictured)

### 6 Housing Bottom Plate

Abrasion-resistant plate delivers breaker protection.

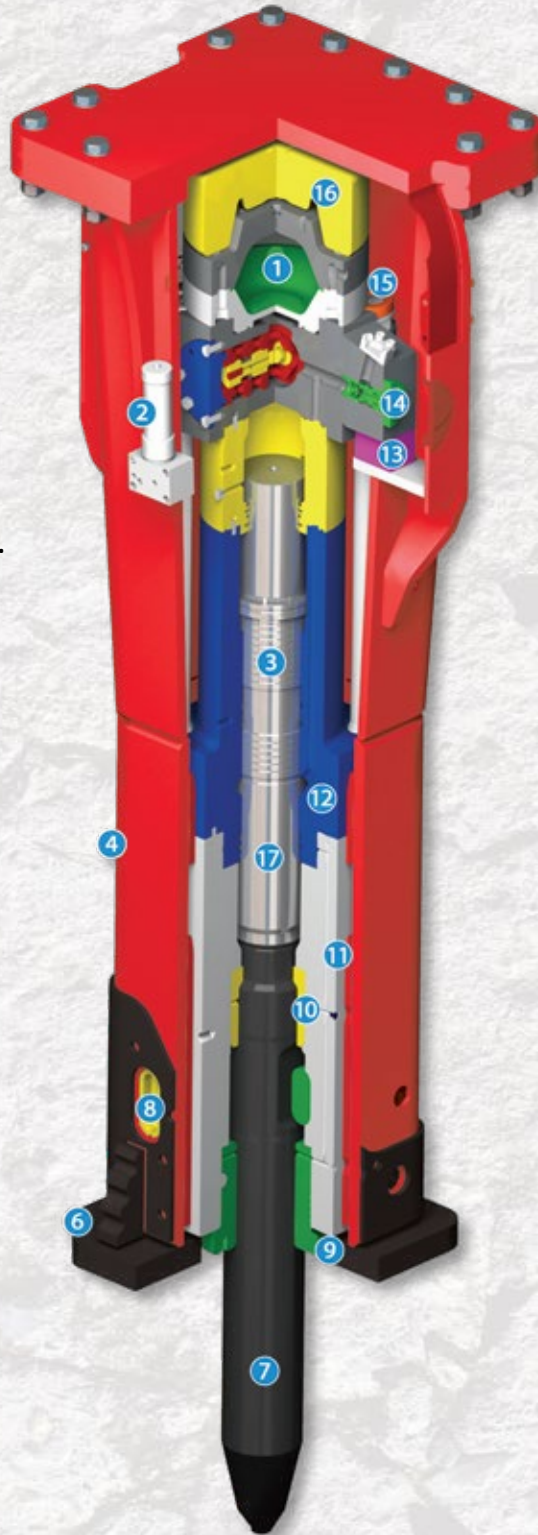
### 7 Tool Bit

High quality, heat-treated steel is designed to the optimal working length to ensure toughness and long wear.

### 8 Dual Tool Retainer Pins

Retainer pins promote even wear pattern and correct tool alignment. (Medium/Large Series)

Single Tool Retainer Pin on Small Series.



### 9 Field Replaceable Tool Bushings

Slip-fit bushing allows owner to change bushings without the need of special tools. The Power Cell does not need to be removed from the housing to replace the bushing.

### 17 Efficient Power Transfer (Piston to tool)

The oil flow allows for optimum transfer of blow energy into the material and reduces recoil.

### 16 Top Buffer

The top buffer acts as a vibration absorber to prevent impulses between the carrier and the breaker.

### 15 Side Tie Rods

Fully enclosed side tie rods increase durability and optimal load carrying capacity.

### 14 Oil Flow Control Valve

Control valve regulates the flow of hydraulic oil for maximum performance regardless of flow variations. (Large Series)

### Check Valve

Check valve prevents back oil flow and reduces unnecessary spikes from the hydraulic circuit. (Medium Series)

### 13 Double Side Buffers

Side absorbers protect the power cell and internal housing. They also suspend the power cell within the housing allowing for easy installation and replacement.

### 12 Cylinder Design

Square design ensures that the cylinder fits tight and aligns to the front head. Rounded lower side rod nut pockets improve the side rod durability.

### 11 Wear Plates

Wear resistant plates between cylinder, front head, and housing increase overall product durability.

### 10 All-in-One Upper Bushing and Thrust Ring Integration

Easier maintenance and serviceability. (Large Series)



### CH SMALL SERIES



Our small series breakers are highly productive tools that can handle the most extreme projects facing both the utility and municipal markets. Excavation, highway, building maintenance and demolition projects in urban areas are no match for this breaker design.

#### SMALL SERIES BREAKER

Model	Ft. Lb. Class	Working Weight LBS/KG	Carrier Weight tons/mt	Tool Diameter INCH/MM	Impact Rate BPM	Flow Range GPM/LPM
CH65	500	*EX 595 / 270 *SS 640 / 290	*EX 2-6 / 1.8-5.4 *SS 2-3.5 / 1.8-3.2	2.67 / 67	500-1,000	10-13 / 40-50
CH70	750	*EX 685 / 310 *SS 948 / 430	*BH-EX 3.5-8.5 / 3.2-7.7 *SS 2.5-4.0 / 2.3-3.6	2.75 / 70	500-1,200	10-24 / 35-90
CH75	1,000	905 / 411	3.3-8.8 / 3-8	2.95 / 75	520-1,000	13-26 / 50-98
CH85	1,400	1,185 / 538	7.5-15 / 6.8-13.6	3.35 / 85	500-900	15-27 / 55-100
CH95	1,800	1,465 / 665	9-17.5 / 8.16-15.8	3.74 / 95	350-700	18-30 / 65-115

\*EX - Mini-Excavator \*SS - Skid Steer \*BH - Backhoe

### CH MEDIUM SERIES



The robust structure and optimized power-to-weight ratio of the medium series breakers are an excellent choice for trenching and excavation projects in non-residential areas as well as rock quarry production. The medium series is also highly productive for foundation and building demolition. The streamline design is the perfect solution for narrow or deep trenches and foundations.

#### MEDIUM SERIES BREAKER

Model	Ft. Lb. Class	Working Weight LBS/KG	Carrier Weight tons/mt	Tool Diameter INCH/MM	Impact Rate BPM	Flow Range GPM/LPM
CH100	2,000	1,965 / 905	11 - 18 / 10 - 16.3	3.93 / 100	350-650	20-33 / 75-125
CH110	2,500	2,640 / 1,197	15.5 - 21 / 14 - 19	4.33 / 110	400-500	24-36 / 90-135
CH120	3,000	3,200 / 1,451	20 - 31 / 18 - 28	4.75 / 120		29-39 / 110-145
CH130	4,000	3,725 / 1,690	22 - 34 / 20 - 30.8	5.12 / 130		32-43 / 120-160
CH140	5,500	4,620 / 2,095	27.5 - 38 / 25 - 34.5	5.51 / 140		44-52 / 165-195



### CH LARGE SERIES



CH large breakers provide high energy production that saves time on your toughest jobs. They are engineered for demolition projects, primary excavation and quarry, tunneling and underwater applications. Compared to conventional blasting techniques, the CH large series breakers allow for more accurate and controlled breaking and demolition.

#### LARGE SERIES BREAKER

Model	Ft. Lb. Class	Working Weight LBS/KG	Carrier Weight tons/mt	Tool Diameter INCH/MM	Impact Rate BPM	Flow Range GPM/LPM
CH150	7,500	5,380 / 2,440	30.5 - 44 / 27.6 - 40	5.90 / 150	350-450	50-65 / 190-250
CH165	10,000	6,500 / 2,948	36.5 - 45 / 33 - 40.8	6.50 / 165	300-450	48-77 / 180-290
CH175	12,000	8,270 / 3,751	44 - 77 / 40 - 69.8	6.89 / 175	300-400	53-84 / 200-320
CH180	14,000	12,130 / 5,502	55 - 82.5 / 50 - 74.8	7.09 / 180		60-90 / 230-340
CH205	16,000	16,530 / 7,498	77 - 120 / 70 - 108.8	8.07 / 205		79-105 / 300-400



## CH SERIES OPTIONS



### TOOL BIT OVERVIEW

Conical, moil or chisel tools are suitable for most jobs. In trenching and demolition applications the material is broken by a combination of impact energy and a wedging effect that forces the material to separate as the tool penetrates. Conical is used for general demolition work where penetrative breaking is required. Moil is used where increased breakout forces are required. Chisel is preferred where a cutting action is required.

Blunt tools are suitable for secondary breaking, boulder reduction applications and scaling in mines or tunnels. The tools break the material with stress waves generated by the breaker which pass through the tool and into the material. The blunt style provides an excellent combination of productivity and resistance to wear.

### MOUNTED LUBRICATORS

**Carrier Mounted Lubricator Kit** - proven Beka World EP Pump and lubrication components. The kit contains reusable fittings, an EP1 bracket, mounting hardware, high pressure hose, quick couplers, CH Series Lube Hose and fitting from breaker to pump, low level grease harness and light.

**Breaker Mounted Lubricator Kit** - simple, economical lubrication system that requires no electrical or hydraulic connections. It operates by using a vibration valve that is activated by cycling the breaker.

**Hydraulic Mounted Lubricator Kit** - equipped with the BEKA HAMAX2 breaker-mounted lubricator system. This compact system is an automatic, hydraulically operated lubrication system.



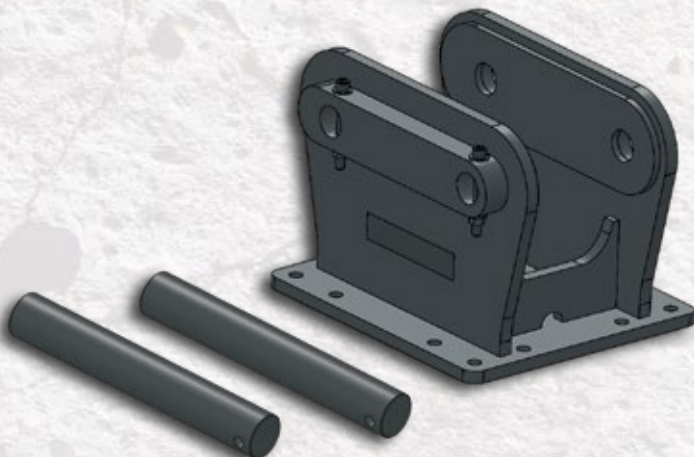
*Carrier Mounted Lubricator*



*Breaker Mounted Lubricator*



*Hydraulic Mounted Lubricator*



### BRACKETS/PINS

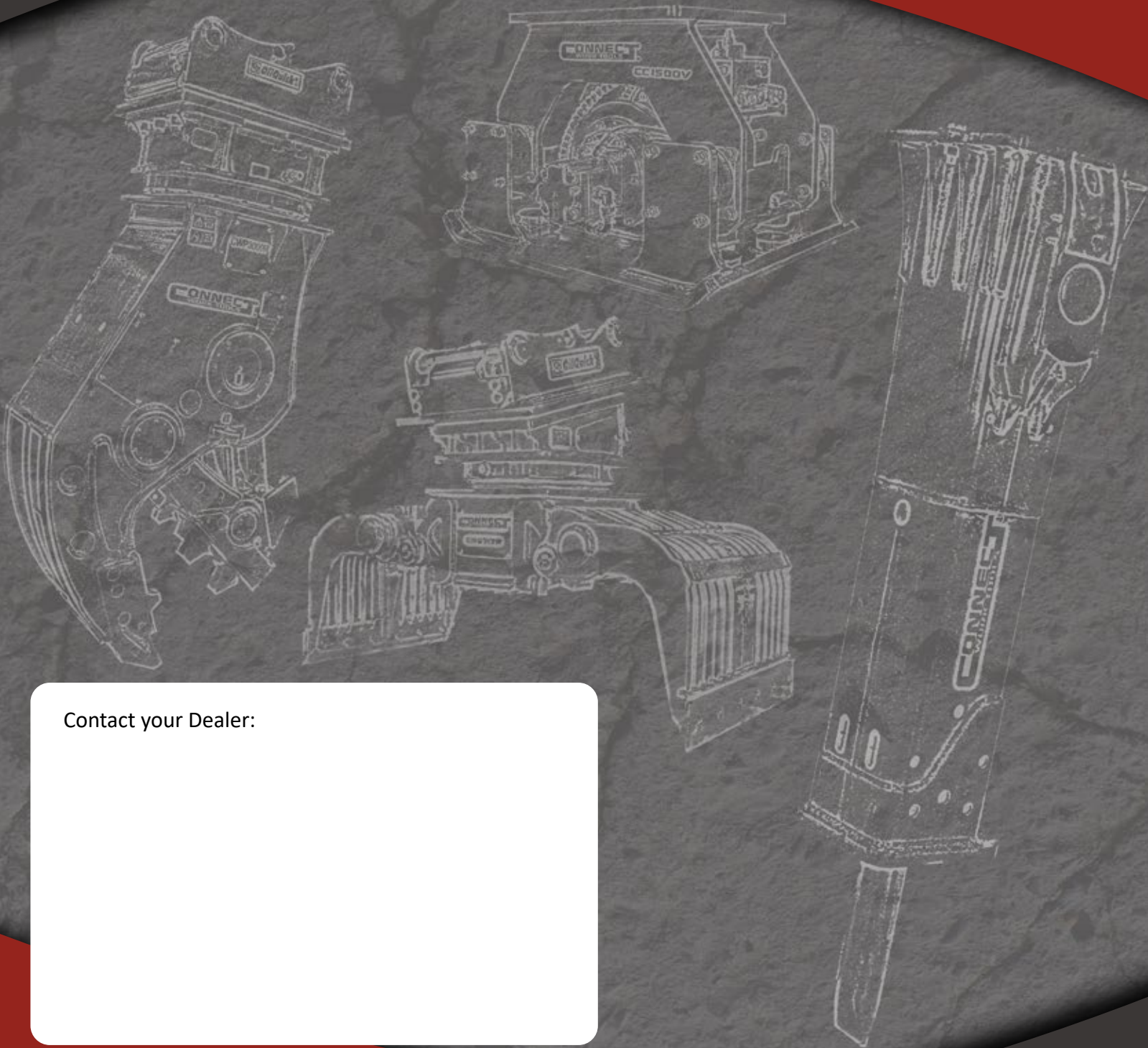
Custom made pin on brackets are available for all models of breakers and are built at the Connect Work Tools state of the art, full service manufacturing facility in Superior, Wisconsin.

Skid Loader style brackets are available for small series breakers.

Mounting Bracket Pins are also available for pin on brackets.



# CONNECT™ WORK TOOLS



Contact your Dealer:

[connectworktools.com](http://connectworktools.com)

Phone: 920-238-6657

Email: [connectinfo@connectworktools.com](mailto:connectinfo@connectworktools.com)

155 Main Street ♦ Superior WI 54880